

# Laurel Bluff



## TOWNHOMES

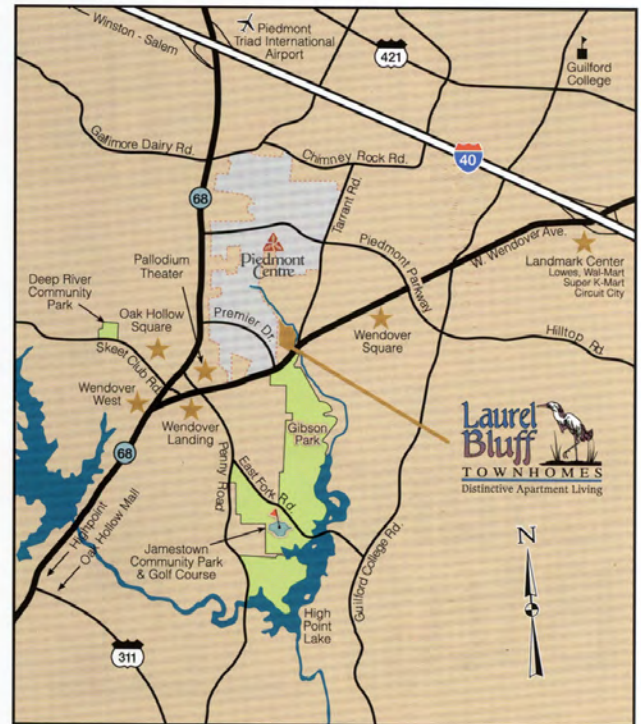
### Distinctive Apartment Living

➤ An Award Winning Community ◀

A planned community, **Laurel Bluff** creates a country feeling with its wonderful mixture of open spaces, cluster of trees and greenery. Located directly off West Wendover in High Point, near Guilford College, Piedmont Business Centre, Bicentennial Greenway and Gibson Park.

**Laurel Bluff** offers its residents spacious apartments and townhomes fully equipped with modern appliances, wall to wall carpet, designer kitchens, separate great rooms and optional washers and dryers. For your recreation and relaxation there is a playground, scenic jogging trail, resort style pool and community clubhouse with a fitness center.

Each of the seven styles of floor plans offers unique opportunities for you to decorate your home to your own special tastes.



#### DIRECTIONS:

I-40 to Wendover Avenue West (toward High Point).  
Laurel Bluff is located on the right hand side of Wendover, just after the corner of Tarrant Road.

High Point, North Carolina  
[www.laurelbluffapts.com](http://www.laurelbluffapts.com)

**Laurel Bluff**  
TOWNHOMES  
Distinctive Apartment Living



3601 Laurel Bluff Circle  
High Point, NC 27265  
Tel: (336) 841-7373  
Fax: (757) 440-3183  
[laurelbluff@palms.net](mailto:laurelbluff@palms.net)



# Carefree Living At Its Very Best

Many Exciting Floor Plans To Choose From!



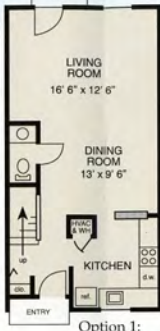
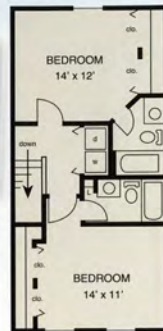
## The MULBERRY

3 Bedroom 2 & 1/2 Bath Townhouse  
1705 Square Feet\*  
Rental Rate: \$ \_\_\_\_\_

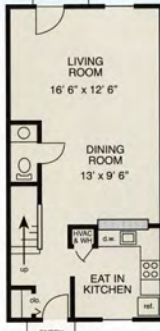


## The LAUREL

2 Bedroom 2 & 1/2 Bath Townhouse  
With Optional Kitchen Floor Plans  
Rental Rate: \$ \_\_\_\_\_ (opt. 1)  
Rental Rate: \$ \_\_\_\_\_ (opt. 2)



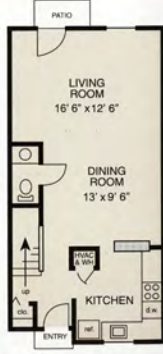
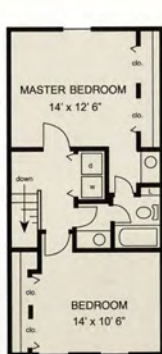
Option 1:  
1154 Sq. Ft.\*



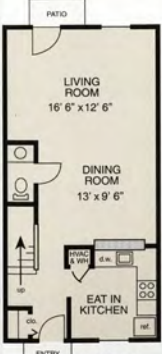
Option 2:  
1181 Sq. Ft.\*



**The DOGWOOD**  
1 Bedroom 1 Bath Garden  
790 Square Feet\*  
Rental Rate: \$ \_\_\_\_\_



Option 1:  
1154 Sq. Ft.\*



Option 2:  
1181 Sq. Ft.\*

## The JUNIPER

2 Bedroom European Bath & 1/2  
Townhouse  
With Optional Kitchen Floor Plans  
Rental Rate: \$ \_\_\_\_\_ (opt. 1)  
Rental Rate: \$ \_\_\_\_\_ (opt. 2)



**Laurel Bluff**

**TOWNHOMES**  
Distinctive Apartment Living

3601 Laurel Bluff Circle  
High Point, NC 27265

CALL OUR FRIENDLY STAFF AT  
(336) 841-7373

[www.laurelbluffapts.com](http://www.laurelbluffapts.com)



## The IRIS

2 Bedroom 2 Bath Garden  
1074 Square Feet\*  
Rental Rate: \$ \_\_\_\_\_

\*Interior space only.  
Floor plans and sizes may vary in some apartments

# History Of Palms Associates

**Y**our community is managed and maintained by Palms Associates - one of the finest and most experienced Property Management firms in the Southeast. The trained staff of Palms Associates manages over 5,000 apartment residences in major cities throughout four states. Understandably, it requires a high degree of professionalism, know-how and experience for an organization to operate successfully on this level over the years. A community maintained by Palms Associates is subject to the latest procedures of professional management, to keep carefully landscaped grounds and high quality materials as attractive as they were on their opening day. But, most importantly, Palms Associates has nice, competent people working very hard every day for you! Our dedicated on-site management will make you feel right at home.



*Distinctive  
Apartment  
Living*

**FOR  
COMPLETE  
INFORMATION  
CALL THE  
PROPERTY  
MANAGER**



**EQUAL HOUSING  
OPPORTUNITY**

## GEORGIA

Fords Pointe/Savannah . . . . . (912) 920-8900

## NORTH CAROLINA

Beachwood Park/Raleigh . . . . . (919) 217-7888  
 Beaver Creek/Apex . . . . . (919) 387-4666  
 Crabtree Crossing/Morrisville . . . . . (919) 380-9595  
 Haw Creek Mews/Asheville . . . . . (828) 298-0000  
 Laurel Bluff/High Point . . . . . (336) 841-7373  
 Longhill Pointe/Fayetteville . . . . . (910) 483-2410  
 Northwoods Mews/Cary . . . . . (919) 460-3838  
 Southridge/Arden-Asheville . . . . . (828) 681-9998  
 Talbert Woods/Mooresville . . . . . (704) 799-0456  
 The Mews/Durham . . . . . (919) 489-1910

## SOUTH CAROLINA

Bridge Pointe/Summerville . . . . . (843) 486-0440  
 Devon Pointe/Goose Creek . . . . . (843) 873-6656  
 Galleria Pointe/Rock Hill . . . . . (803) 985-0444  
 Oldfield Mews/Bluffton-Hilton Head . . . . . (843) 757-8944  
 Rice Terrace/Columbia . . . . . (803) 865-1695  
 ShadowMoss Pointe/Charleston . . . . . (843) 766-2220  
 The Islands/Charleston . . . . . (843) 406-0660

## VIRGINIA

Indian River Gardens/Va. Beach . . . . . (757) 420-5729  
 Lakefield Mews/Henrico . . . . . (804) 222-7777  
 Mill Creek Landing/Hampton . . . . . (757) 850-8977  
 River Mews/Newport News . . . . . (757) 887-5757  
 The Palms/Virginia Beach . . . . . (757) 340-2028

**You can reach us at: [www.palms.net](http://www.palms.net)**



**PALMS ASSOCIATES**

397 Little Neck Road 3400-200 Virginia Beach, VA 23452  
 Telephone (757) 340-3669