

## Exciting Amenities

- Private Entry Neighborhood
- Pet Friendly
- Short Walk to the Beach
- Free Bike Rentals
- Kayak Launch and Storage
- Fishing Pier
- Walking Pier with Gazebo
- BBQ/Picnic Area and Fire Pit
- Reserved Parking
- Covered balcony overlooking the Chesapeake Bay
- Minutes from downtown shopping, restaurants, I-64
- 24/7 Emergency Maintenance
- Pay Rent Online
- Flexible Lease Terms

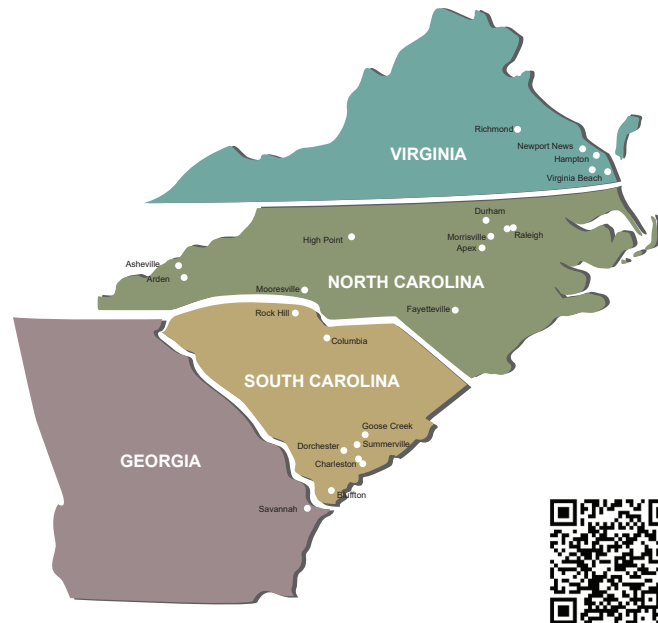


## About Palms Associates

Mill Creek is professionally managed and maintained by Palms Associates, a national leader in development, construction, and property management of multifamily rental communities. With over 50 years of experience, our dedicated team of over 200 professionals manages over 6,000 apartment residences throughout Virginia, North Carolina, South Carolina, and Georgia.

A community maintained by Palms Associates is subject to the high standards of professional management, to keep carefully landscaped grounds and high quality materials looking their best every day. Most importantly, we are quality people working diligently every day to enhance our residents' lifestyles.

For more information visit us at [www.palms.net](http://www.palms.net).



[WWW.PALMS.NET](http://WWW.PALMS.NET)



# Vacation Style Living!

Imagine waking up to a salty breeze from the Chesapeake Bay and the sounds of birds chirping. At Mill Creek Landing you can expect this and a gorgeous apartment home with a private, spacious balcony. Our homes also offer tons of closet space, fully equipped kitchens with stainless steel appliances, and reserved parking. Our pet friendly community includes two piers allowing you to enjoy kayaking, fishing, paddle boarding, or relaxation in the sun. Buckroe Beach is a short walk away from your front door.

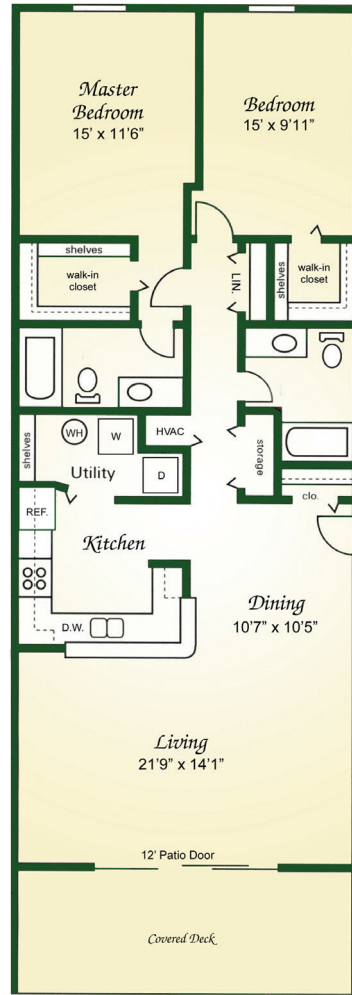
Our unique and beautiful community is located right on the peninsula in Hampton, VA. Hampton is home to Fort Monroe, Langley Air Force Base, NASA Langley Research Center, Hampton University, and a variety of shops and restaurants. For vacation style living with the convenience of everyday essentials look no further than Mill Creek Landing



### From I-64 East or West:

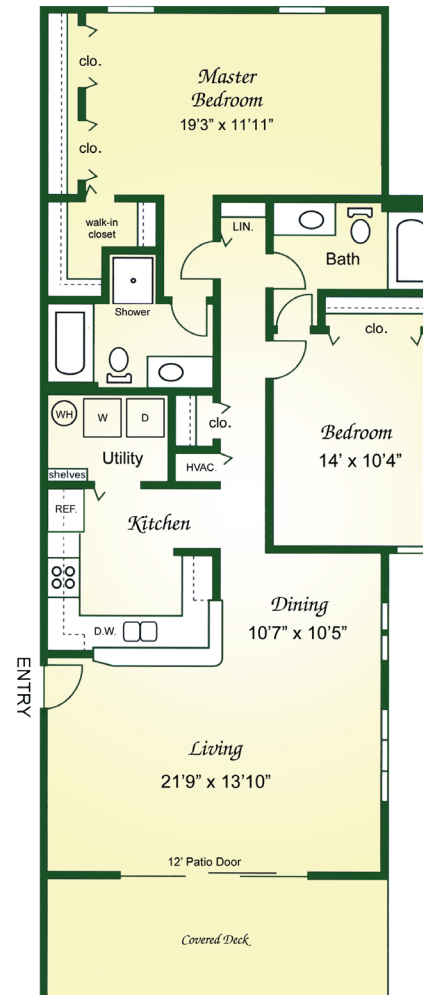
Take exit 268 for Mallory St. toward VA-169 E/Ft. Monroe. Turn left onto S. Mallory St. Turn right onto Atlantic Ave, enter gate to Mill Creek Landing.

# Floor plans to satisfy your lifestyle!



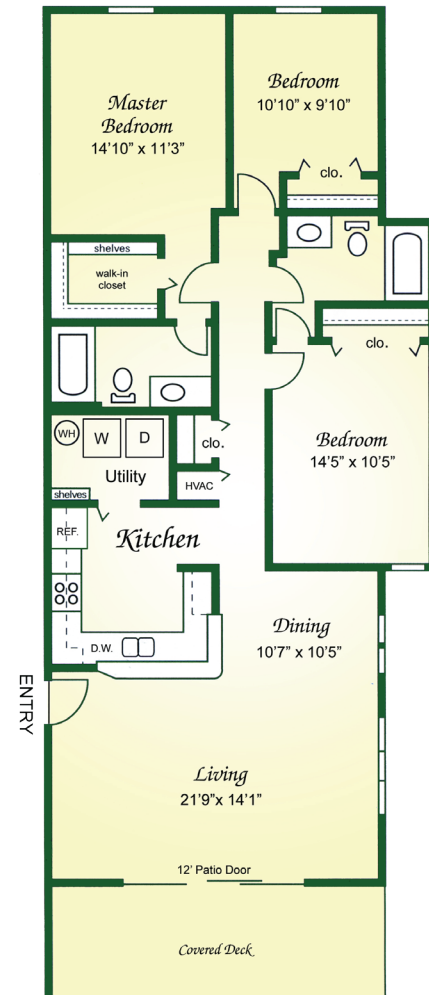
### The Chesapeake

2 Bedroom, 2 Bath  
1,216 sq ft\*



### The DelMarva

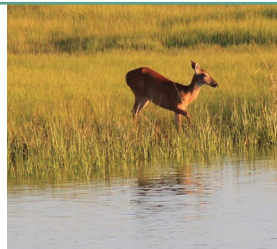
2 Bedroom, 2 Bath  
1,290 sq ft\*



### The Mariner

3 Bedroom, 2 Bath  
1,334 sq ft\*

\*Note: Interior space only. Floor plans and sizes may vary in some apartments.



**Mill Creek Landing Apartments**  
117-B Atlantic Ave. Hampton, VA 23664  
Phone: 757-850-8977  
Email: millcreeklanding@palms.net

