

ABOUT YOUR NEW HOME



116 Old Towne Road
Bluffton, S.C. 29909
www.oldfieldmewsapts.com
843-645-3700

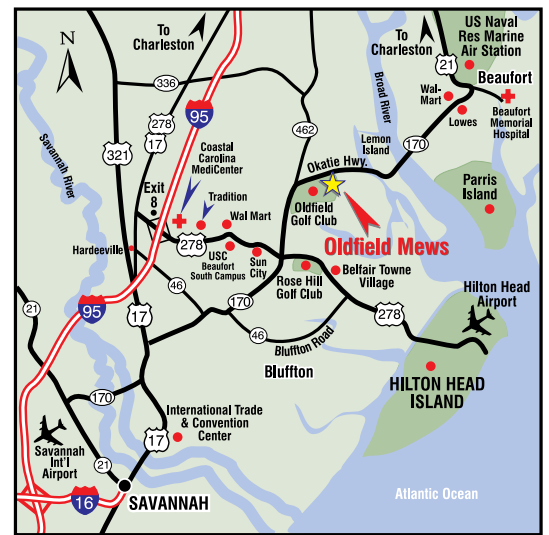


Bluffton, a great place to live, has been named #1 for "Amazing Non-Beach Getaways" by the *Huffington Post*. Situated in Beaufort County, Bluffton offers lush greenery with quick access to beaches, tons of history, arts, shopping, and delicious food.

Whether you are looking for a great place to hike or fish, kayak down the river, learn horse back riding or golfing, or just exploring the Lowcountry, Oldfield Mews is in an ideal location! Easy access to I-95 and US-278 makes traveling to Hilton Head, Savannah, and Charleston simple. Residing in a coveted school district just a few miles away from a nature preserve, dining, and more, it's easy to make Oldfield Mews your new home!

Featuring private townhomes, your pet-friendly community offers several spacious floor plans to choose from, wonderful amenities, and a professional on-site staff ready to help make Oldfield Mews your ideal home.

Visit us at www.oldfieldmewsapts.com



Directions: From I-95 take Exit 8. Turn onto 278E towards Hilton Head/Beaufort. Go 7 miles and exit right onto Rt. 170. Go east towards Beaufort for 5 miles. Turn right onto Old Towne Drive.



Oldfield Mews is professionally managed and maintained by Palms Associates, a national leader in development, construction, and property management of multifamily rental communities. With over 50 years of experience, our dedicated team of over 200 professionals manages over 6,000 apartment residences throughout Virginia, North Carolina, South Carolina, and Georgia.

A community maintained by Palms Associates is subject to the latest procedures of professional management, to keep carefully landscaped grounds and high quality materials as attractive as they were on opening day. Most importantly, we are quality people working diligently every day to enhance our residents' lifestyles.

For more information visit us at www.palms.net.



Palms Associates, LLC

397 Little Neck Road
Building 3400, Suite 200
Virginia Beach, VA 23452

757-340-3669 | www.palms.net

EXCITING AMENITIES



116 Old Towne Road
Bluffton, S.C. 29909
www.oldfieldmewsapts.com
843-645-3700



Bluffton, South Carolina, is filled with southern charm, history, art, and home to Oldfield Mews!

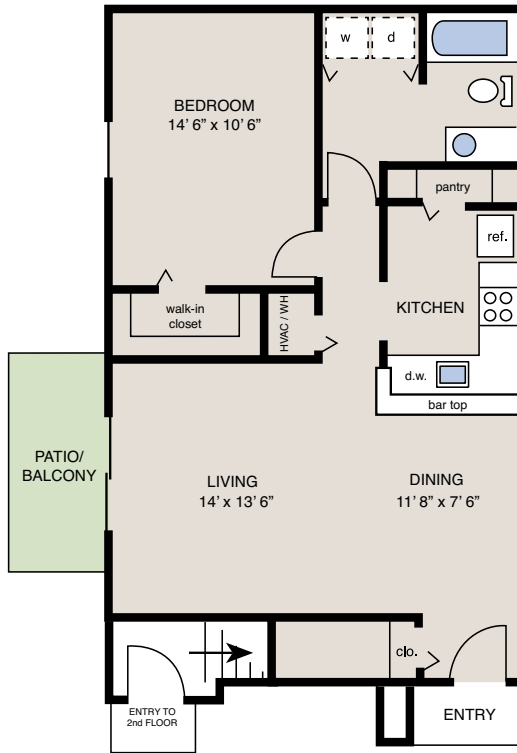
Community Amenities:

- Aquatics & 24-Hr Fitness Center
- 2 Sparkling Pools with Wi-Fi
- Friendly & Professional On-site Staff
- 24-Hr Emergency Maintenance
- Convenient Location near Hilton Head Island, Golf Courses, Shopping, Schools and more
- Easy Access to Interstates
- BBQ/Picnic Area
- Dog Park
- Clubhouse with Wi-Fi
- Townhome & Garden Style Homes
- Online Payment Options
- Short-term Leases Available

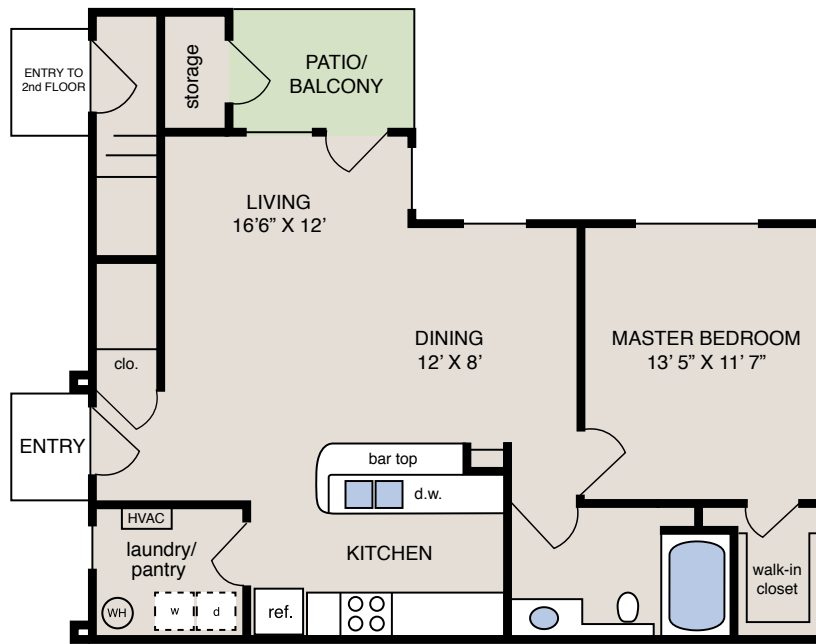
Apartment Amenities:

- Pet Friendly
- All Homes Have Private Entrances
- Attached Garages Available
- 1, 2, & 3 Bedroom Floor Plans
- Spacious Floor Plans
- Separate Dining Area
- Breakfast Bar
- Built-in Microwaves
- Walk-in Closets
- Built-in Linen Closets
- Cathedral Ceilings
- 9' Ceilings
- Designer Kitchens
- Washer/Dryer Connections
- Patio/Balcony
- Pond & Wooded Views
- Ceiling Fans
- Corporate Apartments Available
- Furnished Apartments Available





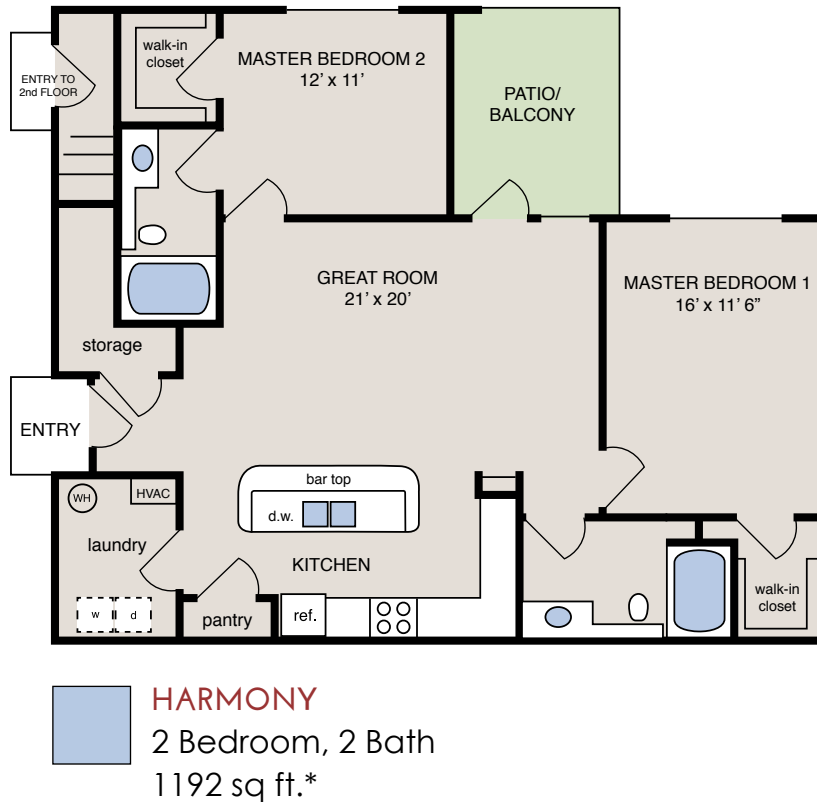
ASHDALE
 1 Bedroom, 1 Bath
 790 sq ft.*



BLISS
 1 Bedroom, 1 Bath
 870 sq ft.*

*Interior Space Only. Floor plans and sizes may vary in some apartments.



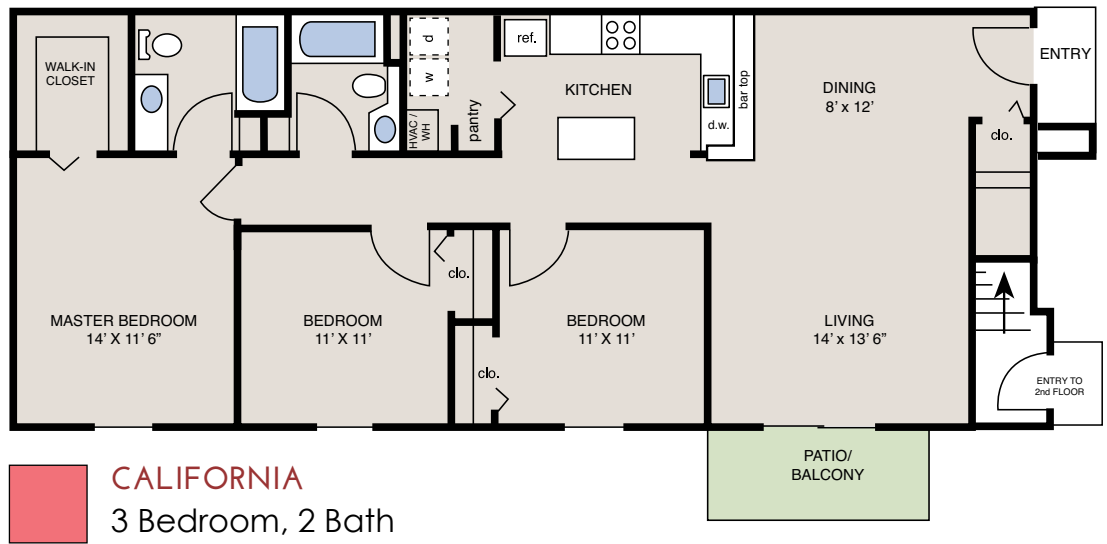


116 Old Towne Road
Bluffton, S.C. 29909
www.oldfieldmewsapts.com
843-645-3700

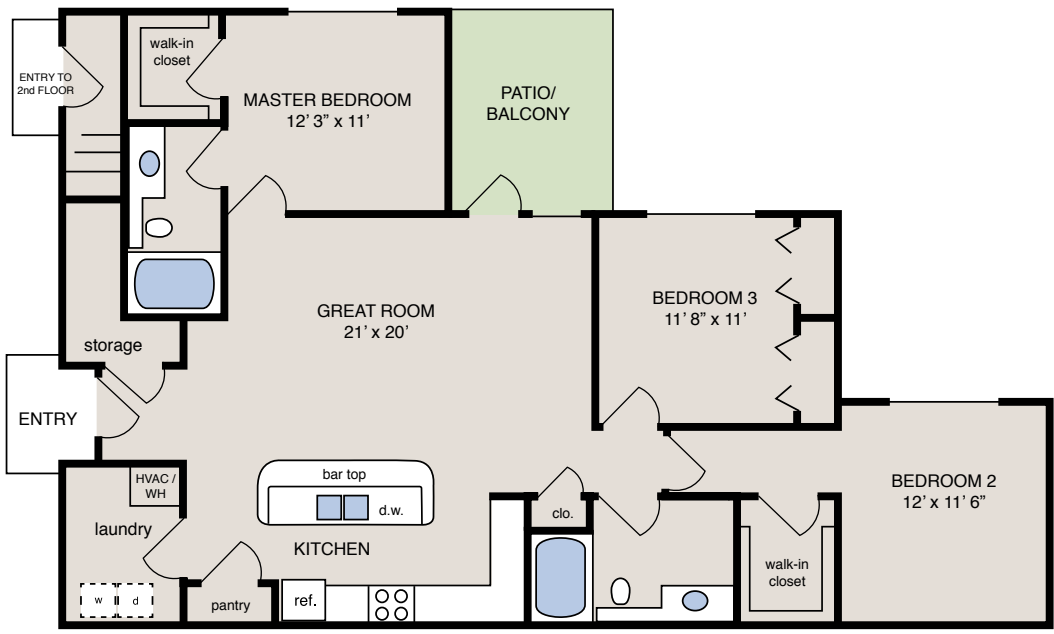


*Interior Space Only. Floor plans and sizes may vary in some apartments.

Excellence
 Relaxing
 Warmth
 Friendly
 Spacious
 Oldfield
 Bluffton
 Comfort
 Private
 Entrances
 Rentals
 Social
 Townhomes
 Bluffton
 Green
 Pet-Friendly
 Lifestyle
 New
 Oldfield
 Bluffton
 Comfort
 Private
 Entrances
 Rentals
 Social
 Townhomes
 Bluffton
 Green
 Pet-Friendly
 Lifestyle
 New



CALIFORNIA
 3 Bedroom, 2 Bath
 1234 sq ft.*



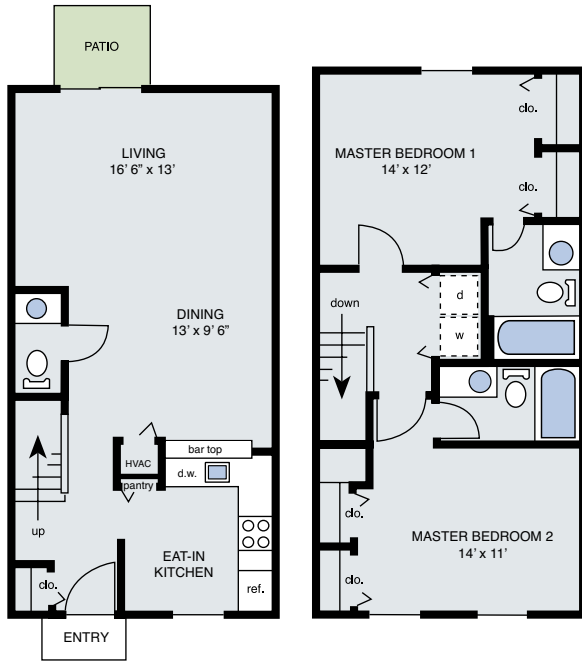
SERENITY
 3 Bedroom, 2 Bath
 1427 sq ft.*



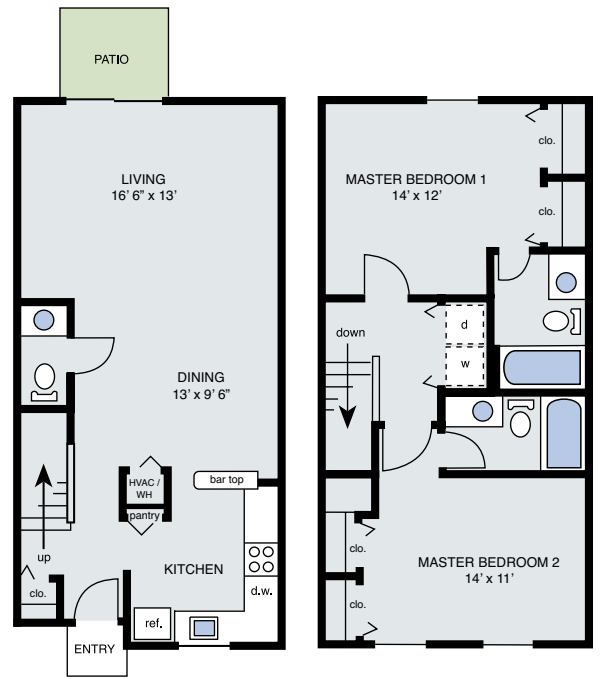
116 Old Towne Road
 Bluffton, S.C. 29909
 www.oldfieldmewsapts.com
 843-645-3700



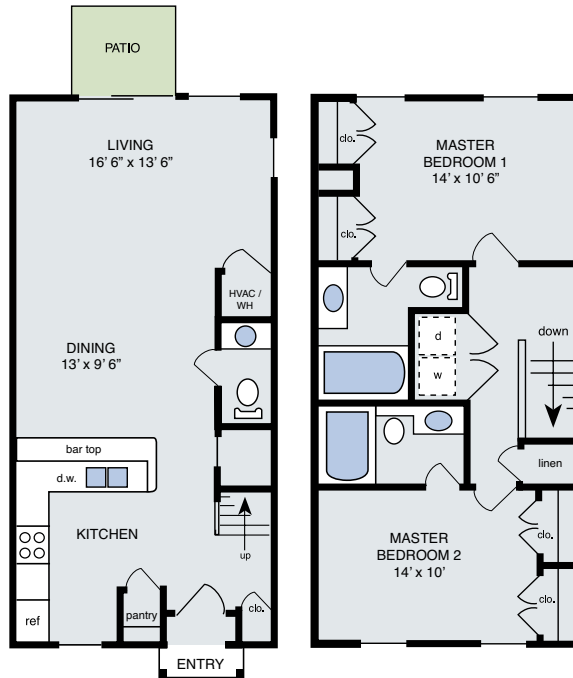
*Interior Space Only. Floor plans and sizes may vary in some apartments.



DERBY
2 Bedroom, 2 1/2 Bath
1182 sq ft.*



EQUESTRIAN
2 Bedroom, 2 1/2 Bath
1154 sq ft.*

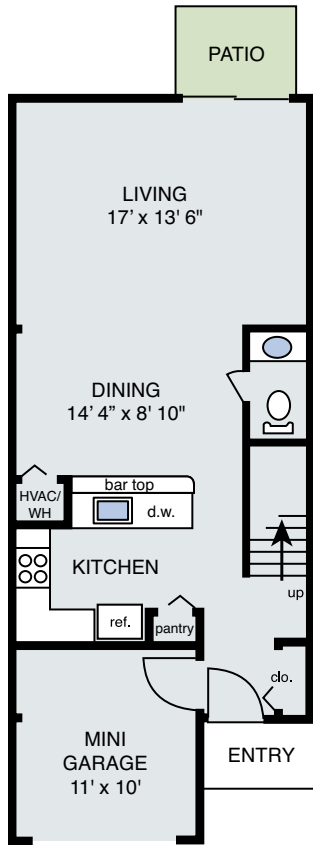


DERBY II
2 Bedroom, 2 1/2 Bath
1231 sq ft.*

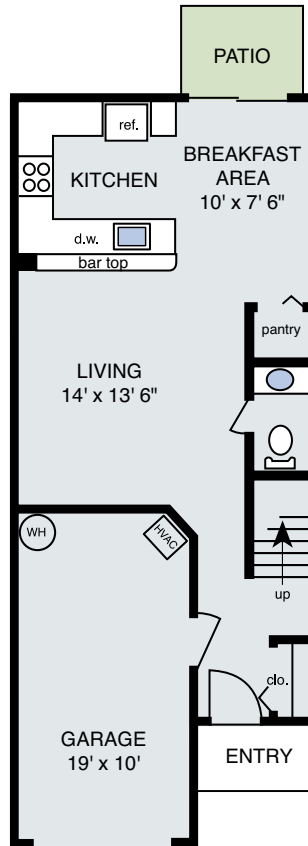
*Interior Space Only. Floor plans and sizes may vary in some apartments.

1ST FLOOR

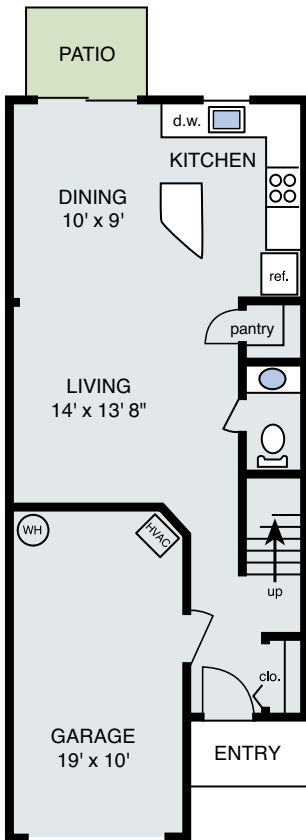
2 Bedroom, 2 1/2 Bath -1424 sq ft.*



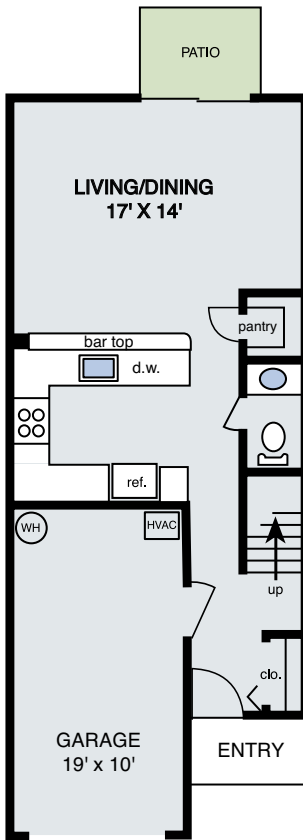
FAIRMONT I & II



JASPER

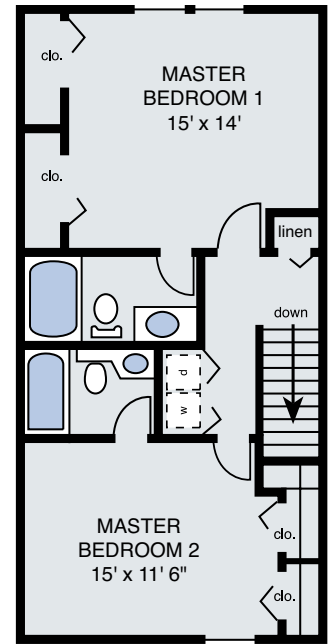


HILLCREST

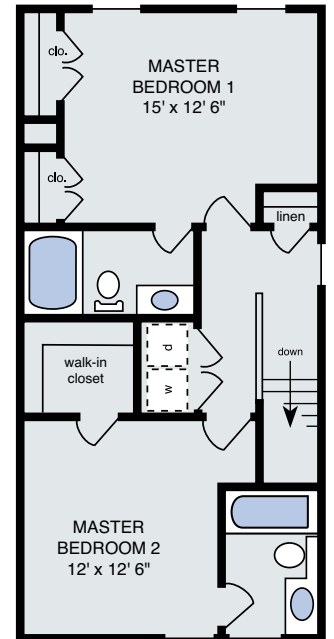


GRAND

2ND FLOOR



ALL EXCEPT FAIRMONT II



FAIRMONT II ONLY



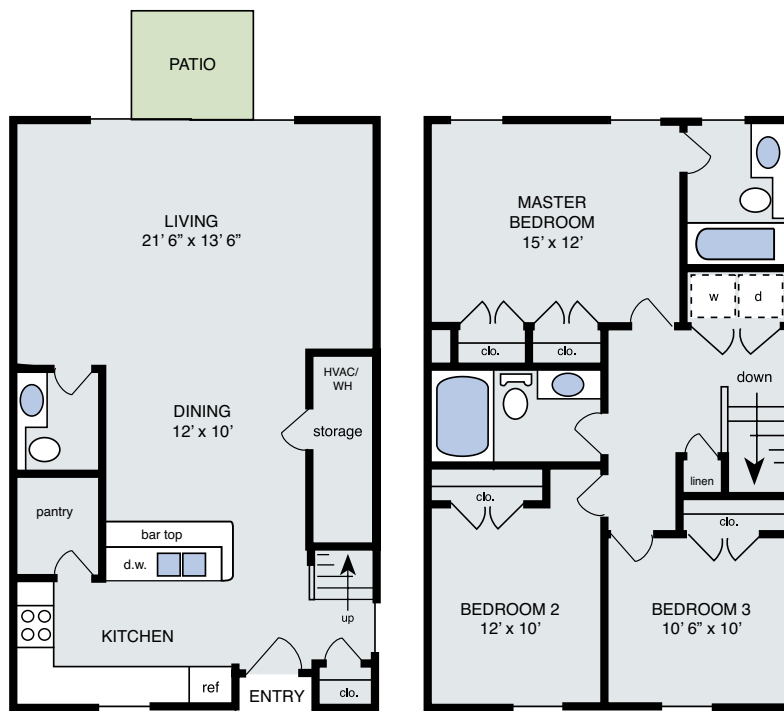
116 Old Towne Road
Bluffton, S.C. 29909
www.oldfieldmewsapts.com
843-645-3700



*Interior Space Only. Floor plans and sizes may vary in some apartments.



YORK
3 Bedroom, 2 1/2 Bath
1491 sq ft.*



YORK II
3 Bedroom, 2 1/2 Bath
1560 sq ft.*

*Interior Space Only. Floor plans and sizes may vary in some apartments.

