

EXHIBIT C

(PLATS AND PLANS)
PHASE 1

SEE PLATS AND PLANS RECORDED IN
DEED BOOK _____, PAGES _____

BURGESS & NIPLÉ

NOTES:
 1. THE PROPERTIES SHOWN HEREON ARE OWNED BY VILLAGES OF AQUIA, LLC, A VIRGINIA LIMITED LIABILITY COMPANY AND ARE LISTED AT THE CLERK'S OFFICE FOR THE COUNTY OF STAFFORD AS FOLLOWS:
 PARCEL I: TAX MAP 30 PARCEL 3J, INSTRUMENT # 050031460.
 PARCEL II: TAX MAP 30 PARCEL 30X-1-B, INSTRUMENT # 050031460.
 PARCEL III: TAX MAP 30 PARCEL 30-3K, INSTRUMENT # 050031460.
 PARCEL IV: TAX MAP 30 PARCEL 30X-2-3N, INSTRUMENT # 050031460.
 PARCEL V: TAX MAP 30 PARCEL 30X-3-3M, INSTRUMENT # 050031460.

2. TITLE REPORT PROVIDED BY LAWYERS TITLE INSURANCE CORPORATION, COMMITMENT NUMBER 10652798 DATED MAY 5, 2005.

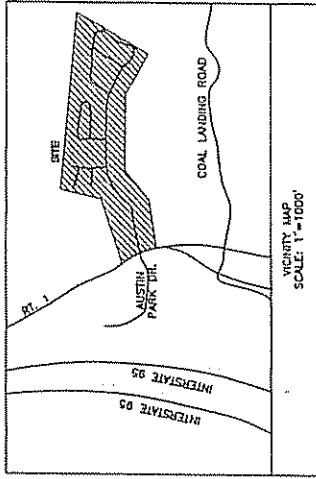
3. THE PROPERTIES SHOWN HEREON FALL IN FLOOD ZONE C (AREAS OF MINIMAL FLOODING) PER STAFFORD COUNTY, VIRGINIA FLOOD INSURANCE RATE MAP COMMUNITY PANEL NUMBER 510154 0135D DATED REVISED MARCH 3, 1992.

4. THE PROPERTIES SHOWN HEREON ARE ZONED R-3 (MULTI FAMILY) AND ARE SUBJECT TO THE FOLLOWING DIMENSIONAL RESTRICTIONS PER THE COUNTY OF STAFFORD, VIRGINIA.
 A: 35 FEET FROM ANY PUBLIC RIGHT OF WAY AND 30 FEET FROM ANY OTHER STRUCTURE.
 B: FRONT YARD-15 FEET
 C: SIDE YARD-15 FEET
 D: REAR YARD-20 FEET
 E: MAXIMUM BUILDING HEIGHT-65 FEET
 F: MINIMUM LOT WIDTH-N/A

5. NO UNDERGROUND UTILITIES HAVE BEEN LOCATED OR SHOWN ON THIS SURVEY. UTILITY FEATURES AS SHOWN ARE BASED ON SITE OBSERVATIONS OF ABOVE GROUND FEATURES.
 6. BUILDING HEIGHTS WERE MEASURED FROM THE FRONT CENTER OF THE BUILDINGS.

"I HEREBY CERTIFY THAT THIS PLAT SHOWS ACCURATELY THE INFORMATION DEPICTED HEREON AND THAT IT COMPLIES WITH THE PROVISIONS OF SECTION 55-79.58A, AND 55-79.5B OF THE CODE OF VIRGINIA 1950, AS AMENDED, AND THAT THERE ARE NO VISIBLE EASEMENTS OR ENCROACHMENTS OTHER THAN AS SHOWN OR NOTED HEREON. I FURTHER CERTIFY THAT ALL UNITS OR PORTIONS THEREOF DEPICTED HEREON HAVE BEEN SUBSTANTIALLY COMPLETED."

BURGESS AND NIPLÉ
 DATE: 12/22/05
 BY: Scott P. Borowski, L.S. VIRGINIA REGISTRATION NO. 2665



ACREAGE:
 PARCEL B 2.786 AC.
 PARCEL 3K 0.472 AC.
 PARCEL 3-M 3.739 AC.
 PARCEL 3J 1.213 AC.
 PARCEL 3N-1 6.886 AC.
 SUBMITTED LANDS 15.096 AC.
 ADDITIONAL LANDS 0.507 AC.

LEGEND

- VEPCO
 - CDI
 - B.R.W.
 - C.R.W.
 - PB.
 - DB.
 - PG.
 - PF.
 - PKF
 - POB
 - PCL
 - CP
 - W.M.S
 - WV
 - CONC.
 - APPROX.
 - ESMT
 - PVC
 - LR
 - YD
 - TYP.
 - DHF
 - AC
- MAIL BOX
 - FLAG POLE
 - RIP-RAP STONE
 - STORM MH
 - SIGN (SYMBOL)
 - FIRE HYDRANT
 - UTILITY POLE
 - GUY POLE
 - ELECTRIC METER
 - ELECTRIC TRANSFORMER
 - AIR CONDITIONER
 - HANDICAP PARKING SPACE
 - NUMBER OF REGULAR PARKING SPACES
 - SANITARY SEWER MANHOLE
 - WATER VALVE
 - FENCE
 - TELEPHONE PEDISTAL
 - SANITARY CLEAN-OUT
 - WATER METERS
- VIRGINIA POWER AND ELECTRIC
 - CURB DROP INLET
 - BLOCK RETAINING WALL
 - CONCRETE RETAINING WALL
 - PLAY BOOK
 - DEED BOOK
 - PAGE
 - STEEL PIN FOUND
 - PARKER-KAYLON NAIL SET
 - POINT OF BEGINNING
 - PARCEL
 - CONCRETE PIPE
 - WATER METERS
 - WATER VALVE
 - CONCRETE
 - APPROXIMATE
 - EASEMENT
 - POLY-VINYL CHLORIDE PIPE
 - LAND RECORD
 - YARD DRAIN
 - TYPICAL
 - DRILL HOLE FOUND
 - ACRE

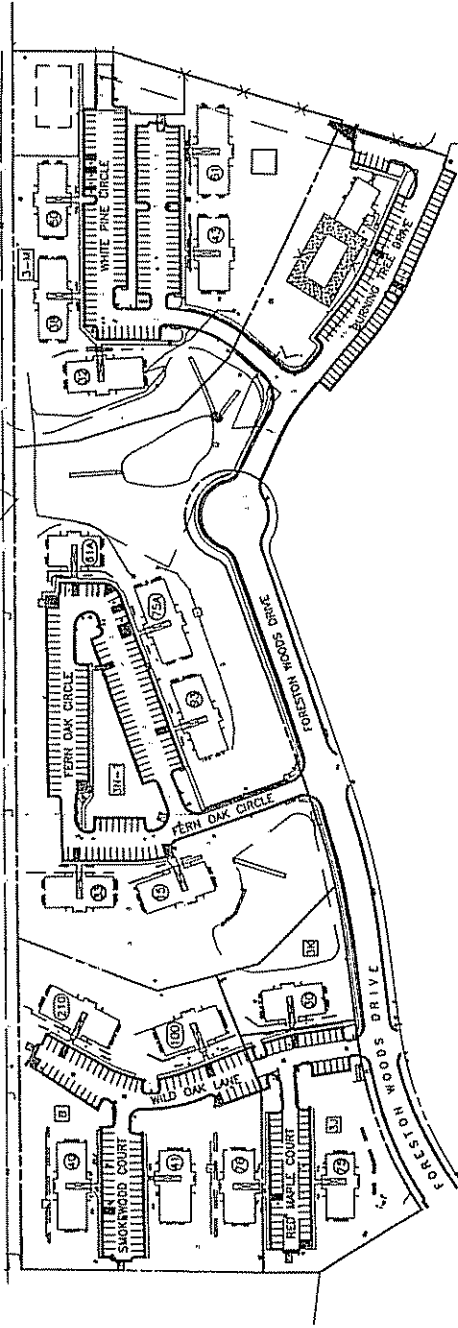
PLANS OF
 CARRIAGE POINTE AT AQUIA
 A CONDOMINIUM LIVING 3K
 ON PARCELS 3K, 3M, 3N-1
 VILLAGES OF AQUIA SECTION ONE
 REMAINDER OF PARCEL 3N-1
 VILLAGES OF AQUIA SECTION TWO
 PLAY BOOK 37 PAGES 102-104
 PLAY BOOK 30 PAGE 248
 PARCEL 3-N
 VILLAGES OF AQUIA SECTION THREE
 PLAN BOOK 31 PAGES NUMBER 29, 2005
 REV DECEMBER 21, 2005



BURGESS & NIPLÉ

SURVEYED BY: SCOTT BOROWSKI, WILLIAM COLLINGS, MIKE FESSLER, NATHAN ALLEY, CHAD BURLETTE, PRESTON JUDSON

BURGESS & NIPLE



- 61 WHITE PINE CIRCLE
2 STORY FRAME
HEIGHT=25.50
- 32 WHITE PINE CIRCLE
3 STORY FRAME
HEIGHT=30.00
- 33 FERN OAK CIRCLE
3 STORY FRAME
HEIGHT=30.00
- 30 WILD OAK LANE
3 STORY FRAME
HEIGHT=30.00
- 75 RED MAPLE COURT
2 STORY FRAME
HEIGHT=25.50
- 76 RED MAPLE COURT
2 STORY FRAME
HEIGHT=25.50
- 41 SUNKWOOD COURT
2 STORY FRAME
HEIGHT=25.50
- 40 SUNKWOOD COURT
2 STORY FRAME
HEIGHT=25.50
- 15 FERN OAK CIRCLE
3 STORY FRAME
HEIGHT=30.00

- 35 WILD OAK LANE
3 STORY FRAME
HEIGHT=30.00
- 100 WILD OAK LANE
3 STORY FRAME
HEIGHT=30.00
- 210 WILD OAK LANE
3 STORY FRAME
HEIGHT=30.00
- 15 FERN OAK CIRCLE
3 STORY FRAME
HEIGHT=30.00

- 43 WHITE PINE CIRCLE
3 STORY FRAME
HEIGHT=30.00
- 50 2 STORY FRAME
HEIGHT=25.50

- 61 WHITE PINE CIRCLE
2 STORY FRAME
HEIGHT=25.50

- 61 WHITE PINE CIRCLE
2 STORY FRAME
HEIGHT=25.50

- 61 WHITE PINE CIRCLE
2 STORY FRAME
HEIGHT=25.50

- 61 WHITE PINE CIRCLE
2 STORY FRAME
HEIGHT=25.50

- 61 WHITE PINE CIRCLE
2 STORY FRAME
HEIGHT=25.50

PLANS OF
CARRIAGE POINTE AT AQUIA
A COMPOUND BEING
ONE PARCEL IN AQUIA SECTION ONE
VILLAGES OF AQUIA SECTION ONE
REMAINDER OF PARCEL 3N-1
VILLAGES OF AQUIA SECTION TWO
PARCEL 3N-1
PLAY BOOK 30 PAGE 248
PARCEL 3-M
VILLAGES OF AQUIA SECTION THREE
PLAY BOOK 31 PAGE 248
REV. DECEMBER 21, 2005



BURGESS & NIPLE

REGISTERED PROFESSIONAL ARCHITECTS
10000 WOODBURN ROAD, SUITE 200
FARMERSBURG, MD 21051
TEL: (410) 326-5555 FAX: (410) 326-5556

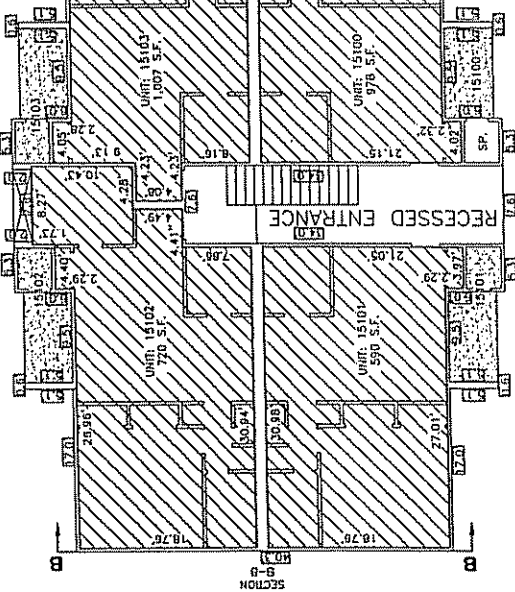
SUPervised by: SCOTT BOROWSKI, WILLIAM
COLLIAS, MIKE FESSLER, NATHAN ALLEY, CHAD
BUNDITTE, PRESTON JUDSON

SCALE: 1"=100'

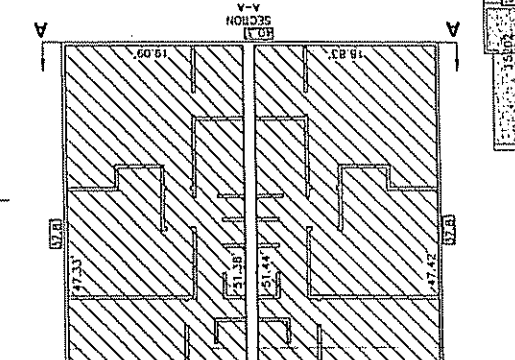


BURGESS & NIPILE

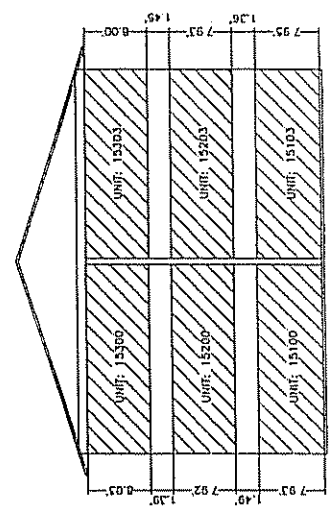
PLOTTED: 12/27/2005 2:11:12 PM



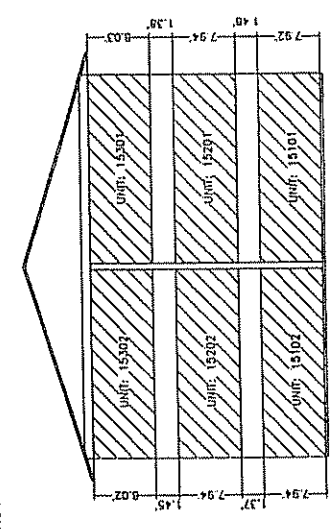
FIRST FLOOR



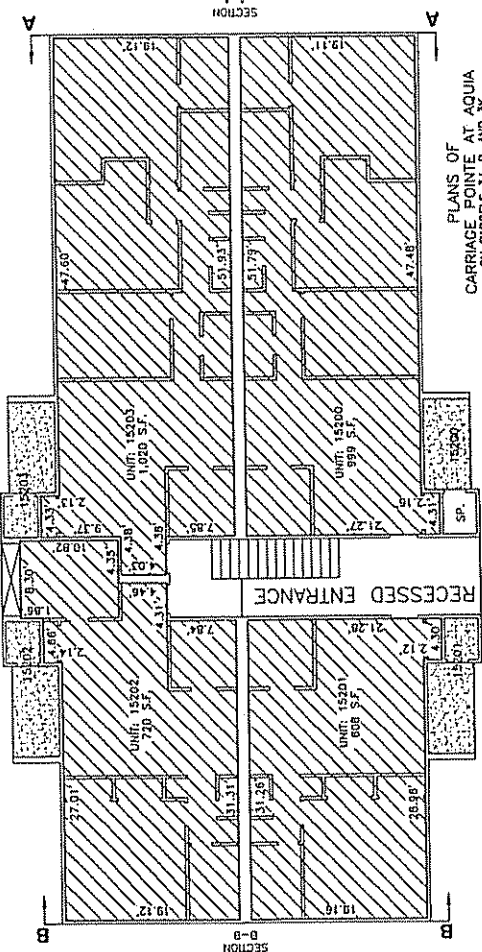
SECOND FLOOR



SECTION A-A



SECTION B-B



SECTION A-A

PLANS OF CARRIAGE POINTE AT AQUA
ON PARCELS 31, B, AND 36
VILLAGES OF AQUA SECTION ONE
REMAINDER OF PARCEL 3N-1
VILLAGES OF AQUA SECTION TWO
PLU: R30000-02-00000-000-004
PLN: PROJECT 30, PAGE 24B
PARCEL 3-N
VILLAGES OF AQUA SECTION THREE
PLAT BOOK 31, PAGE 18
REV. DECEMBER 21, 2005



BURGESS & NIPILE

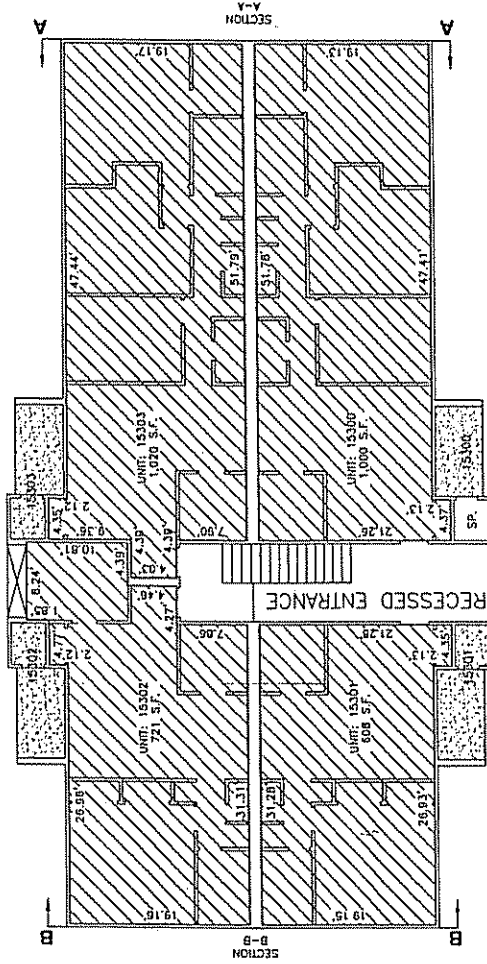
SURVEYED BY: SCOTT BOROWSKI, WILLIAM
CHAD WILSON, FESSLER, HATHAN ALLEY, CHAD
BURDETTE, FRIGSTON-JUDSON

1100 WISCONSIN AVENUE, SUITE 200
Arlington, VA 22202
TEL: (703) 465-2565 FAX: (703) 465-8274

SCALE: 1"=8'

SHEET 3 OF 30

JOB NO. 41417



THIRD FLOOR

- LEGEND
- COMMON ELEMENT
 - UNIT
 - LIMITED COMMON ELEMENT, 15100 INDICATES UNIT TO WHICH LIMITED ELEMENT IS ASSIGNED
 - EXTERIOR DIMENSIONS (AT FIRST FLOOR)
 - SP. SPRINKLER ROOM

PLANS OF
CARRIAGE POINTE AT AQUIA
ON PARCELS 3-1, 3-2, 3-3, 3-4, 3-5, 3-6, 3-7, 3-8, 3-9, 3-10, 3-11, 3-12, 3-13, 3-14, 3-15, 3-16, 3-17, 3-18, 3-19, 3-20, 3-21, 3-22, 3-23, 3-24, 3-25, 3-26, 3-27, 3-28, 3-29, 3-30, 3-31, 3-32, 3-33, 3-34, 3-35, 3-36, 3-37, 3-38, 3-39, 3-40, 3-41, 3-42, 3-43, 3-44, 3-45, 3-46, 3-47, 3-48, 3-49, 3-50, 3-51, 3-52, 3-53, 3-54, 3-55, 3-56, 3-57, 3-58, 3-59, 3-60, 3-61, 3-62, 3-63, 3-64, 3-65, 3-66, 3-67, 3-68, 3-69, 3-70, 3-71, 3-72, 3-73, 3-74, 3-75, 3-76, 3-77, 3-78, 3-79, 3-80, 3-81, 3-82, 3-83, 3-84, 3-85, 3-86, 3-87, 3-88, 3-89, 3-90, 3-91, 3-92, 3-93, 3-94, 3-95, 3-96, 3-97, 3-98, 3-99, 3-100, 3-101, 3-102, 3-103, 3-104, 3-105, 3-106, 3-107, 3-108, 3-109, 3-110, 3-111, 3-112, 3-113, 3-114, 3-115, 3-116, 3-117, 3-118, 3-119, 3-120, 3-121, 3-122, 3-123, 3-124, 3-125, 3-126, 3-127, 3-128, 3-129, 3-130, 3-131, 3-132, 3-133, 3-134, 3-135, 3-136, 3-137, 3-138, 3-139, 3-140, 3-141, 3-142, 3-143, 3-144, 3-145, 3-146, 3-147, 3-148, 3-149, 3-150, 3-151, 3-152, 3-153, 3-154, 3-155, 3-156, 3-157, 3-158, 3-159, 3-160, 3-161, 3-162, 3-163, 3-164, 3-165, 3-166, 3-167, 3-168, 3-169, 3-170, 3-171, 3-172, 3-173, 3-174, 3-175, 3-176, 3-177, 3-178, 3-179, 3-180, 3-181, 3-182, 3-183, 3-184, 3-185, 3-186, 3-187, 3-188, 3-189, 3-190, 3-191, 3-192, 3-193, 3-194, 3-195, 3-196, 3-197, 3-198, 3-199, 3-200, 3-201, 3-202, 3-203, 3-204, 3-205, 3-206, 3-207, 3-208, 3-209, 3-210, 3-211, 3-212, 3-213, 3-214, 3-215, 3-216, 3-217, 3-218, 3-219, 3-220, 3-221, 3-222, 3-223, 3-224, 3-225, 3-226, 3-227, 3-228, 3-229, 3-230, 3-231, 3-232, 3-233, 3-234, 3-235, 3-236, 3-237, 3-238, 3-239, 3-240, 3-241, 3-242, 3-243, 3-244, 3-245, 3-246, 3-247, 3-248, 3-249, 3-250, 3-251, 3-252, 3-253, 3-254, 3-255, 3-256, 3-257, 3-258, 3-259, 3-260, 3-261, 3-262, 3-263, 3-264, 3-265, 3-266, 3-267, 3-268, 3-269, 3-270, 3-271, 3-272, 3-273, 3-274, 3-275, 3-276, 3-277, 3-278, 3-279, 3-280, 3-281, 3-282, 3-283, 3-284, 3-285, 3-286, 3-287, 3-288, 3-289, 3-290, 3-291, 3-292, 3-293, 3-294, 3-295, 3-296, 3-297, 3-298, 3-299, 3-300, 3-301, 3-302, 3-303, 3-304, 3-305, 3-306, 3-307, 3-308, 3-309, 3-310, 3-311, 3-312, 3-313, 3-314, 3-315, 3-316, 3-317, 3-318, 3-319, 3-320, 3-321, 3-322, 3-323, 3-324, 3-325, 3-326, 3-327, 3-328, 3-329, 3-330, 3-331, 3-332, 3-333, 3-334, 3-335, 3-336, 3-337, 3-338, 3-339, 3-340, 3-341, 3-342, 3-343, 3-344, 3-345, 3-346, 3-347, 3-348, 3-349, 3-350, 3-351, 3-352, 3-353, 3-354, 3-355, 3-356, 3-357, 3-358, 3-359, 3-360, 3-361, 3-362, 3-363, 3-364, 3-365, 3-366, 3-367, 3-368, 3-369, 3-370, 3-371, 3-372, 3-373, 3-374, 3-375, 3-376, 3-377, 3-378, 3-379, 3-380, 3-381, 3-382, 3-383, 3-384, 3-385, 3-386, 3-387, 3-388, 3-389, 3-390, 3-391, 3-392, 3-393, 3-394, 3-395, 3-396, 3-397, 3-398, 3-399, 3-400, 3-401, 3-402, 3-403, 3-404, 3-405, 3-406, 3-407, 3-408, 3-409, 3-410, 3-411, 3-412, 3-413, 3-414, 3-415, 3-416, 3-417, 3-418, 3-419, 3-420, 3-421, 3-422, 3-423, 3-424, 3-425, 3-426, 3-427, 3-428, 3-429, 3-430, 3-431, 3-432, 3-433, 3-434, 3-435, 3-436, 3-437, 3-438, 3-439, 3-440, 3-441, 3-442, 3-443, 3-444, 3-445, 3-446, 3-447, 3-448, 3-449, 3-450, 3-451, 3-452, 3-453, 3-454, 3-455, 3-456, 3-457, 3-458, 3-459, 3-460, 3-461, 3-462, 3-463, 3-464, 3-465, 3-466, 3-467, 3-468, 3-469, 3-470, 3-471, 3-472, 3-473, 3-474, 3-475, 3-476, 3-477, 3-478, 3-479, 3-480, 3-481, 3-482, 3-483, 3-484, 3-485, 3-486, 3-487, 3-488, 3-489, 3-490, 3-491, 3-492, 3-493, 3-494, 3-495, 3-496, 3-497, 3-498, 3-499, 3-500, 3-501, 3-502, 3-503, 3-504, 3-505, 3-506, 3-507, 3-508, 3-509, 3-510, 3-511, 3-512, 3-513, 3-514, 3-515, 3-516, 3-517, 3-518, 3-519, 3-520, 3-521, 3-522, 3-523, 3-524, 3-525, 3-526, 3-527, 3-528, 3-529, 3-530, 3-531, 3-532, 3-533, 3-534, 3-535, 3-536, 3-537, 3-538, 3-539, 3-540, 3-541, 3-542, 3-543, 3-544, 3-545, 3-546, 3-547, 3-548, 3-549, 3-550, 3-551, 3-552, 3-553, 3-554, 3-555, 3-556, 3-557, 3-558, 3-559, 3-560, 3-561, 3-562, 3-563, 3-564, 3-565, 3-566, 3-567, 3-568, 3-569, 3-570, 3-571, 3-572, 3-573, 3-574, 3-575, 3-576, 3-577, 3-578, 3-579, 3-580, 3-581, 3-582, 3-583, 3-584, 3-585, 3-586, 3-587, 3-588, 3-589, 3-590, 3-591, 3-592, 3-593, 3-594, 3-595, 3-596, 3-597, 3-598, 3-599, 3-600, 3-601, 3-602, 3-603, 3-604, 3-605, 3-606, 3-607, 3-608, 3-609, 3-610, 3-611, 3-612, 3-613, 3-614, 3-615, 3-616, 3-617, 3-618, 3-619, 3-620, 3-621, 3-622, 3-623, 3-624, 3-625, 3-626, 3-627, 3-628, 3-629, 3-630, 3-631, 3-632, 3-633, 3-634, 3-635, 3-636, 3-637, 3-638, 3-639, 3-640, 3-641, 3-642, 3-643, 3-644, 3-645, 3-646, 3-647, 3-648, 3-649, 3-650, 3-651, 3-652, 3-653, 3-654, 3-655, 3-656, 3-657, 3-658, 3-659, 3-660, 3-661, 3-662, 3-663, 3-664, 3-665, 3-666, 3-667, 3-668, 3-669, 3-670, 3-671, 3-672, 3-673, 3-674, 3-675, 3-676, 3-677, 3-678, 3-679, 3-680, 3-681, 3-682, 3-683, 3-684, 3-685, 3-686, 3-687, 3-688, 3-689, 3-690, 3-691, 3-692, 3-693, 3-694, 3-695, 3-696, 3-697, 3-698, 3-699, 3-700, 3-701, 3-702, 3-703, 3-704, 3-705, 3-706, 3-707, 3-708, 3-709, 3-710, 3-711, 3-712, 3-713, 3-714, 3-715, 3-716, 3-717, 3-718, 3-719, 3-720, 3-721, 3-722, 3-723, 3-724, 3-725, 3-726, 3-727, 3-728, 3-729, 3-730, 3-731, 3-732, 3-733, 3-734, 3-735, 3-736, 3-737, 3-738, 3-739, 3-740, 3-741, 3-742, 3-743, 3-744, 3-745, 3-746, 3-747, 3-748, 3-749, 3-750, 3-751, 3-752, 3-753, 3-754, 3-755, 3-756, 3-757, 3-758, 3-759, 3-760, 3-761, 3-762, 3-763, 3-764, 3-765, 3-766, 3-767, 3-768, 3-769, 3-770, 3-771, 3-772, 3-773, 3-774, 3-775, 3-776, 3-777, 3-778, 3-779, 3-780, 3-781, 3-782, 3-783, 3-784, 3-785, 3-786, 3-787, 3-788, 3-789, 3-790, 3-791, 3-792, 3-793, 3-794, 3-795, 3-796, 3-797, 3-798, 3-799, 3-800, 3-801, 3-802, 3-803, 3-804, 3-805, 3-806, 3-807, 3-808, 3-809, 3-810, 3-811, 3-812, 3-813, 3-814, 3-815, 3-816, 3-817, 3-818, 3-819, 3-820, 3-821, 3-822, 3-823, 3-824, 3-825, 3-826, 3-827, 3-828, 3-829, 3-830, 3-831, 3-832, 3-833, 3-834, 3-835, 3-836, 3-837, 3-838, 3-839, 3-840, 3-841, 3-842, 3-843, 3-844, 3-845, 3-846, 3-847, 3-848, 3-849, 3-850, 3-851, 3-852, 3-853, 3-854, 3-855, 3-856, 3-857, 3-858, 3-859, 3-860, 3-861, 3-862, 3-863, 3-864, 3-865, 3-866, 3-867, 3-868, 3-869, 3-870, 3-871, 3-872, 3-873, 3-874, 3-875, 3-876, 3-877, 3-878, 3-879, 3-880, 3-881, 3-882, 3-883, 3-884, 3-885, 3-886, 3-887, 3-888, 3-889, 3-890, 3-891, 3-892, 3-893, 3-894, 3-895, 3-896, 3-897, 3-898, 3-899, 3-900, 3-901, 3-902, 3-903, 3-904, 3-905, 3-906, 3-907, 3-908, 3-909, 3-910, 3-911, 3-912, 3-913, 3-914, 3-915, 3-916, 3-917, 3-918, 3-919, 3-920, 3-921, 3-922, 3-923, 3-924, 3-925, 3-926, 3-927, 3-928, 3-929, 3-930, 3-931, 3-932, 3-933, 3-934, 3-935, 3-936, 3-937, 3-938, 3-939, 3-940, 3-941, 3-942, 3-943, 3-944, 3-945, 3-946, 3-947, 3-948, 3-949, 3-950, 3-951, 3-952, 3-953, 3-954, 3-955, 3-956, 3-957, 3-958, 3-959, 3-960, 3-961, 3-962, 3-963, 3-964, 3-965, 3-966, 3-967, 3-968, 3-969, 3-970, 3-971, 3-972, 3-973, 3-974, 3-975, 3-976, 3-977, 3-978, 3-979, 3-980, 3-981, 3-982, 3-983, 3-984, 3-985, 3-986, 3-987, 3-988, 3-989, 3-990, 3-991, 3-992, 3-993, 3-994, 3-995, 3-996, 3-997, 3-998, 3-999, 4000

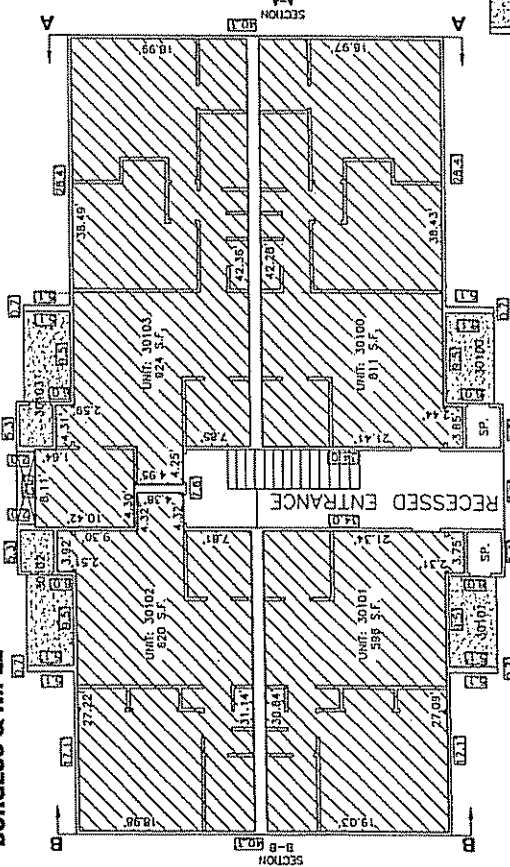


BURGESS & NIPLÉ
 ARCHITECTS
 111 BURGESS PARK DRIVE, SUITE 125, WASHINGTON, VA 22102-4233
 TEL: (703) 466-1554 FAX: (703) 466-1624

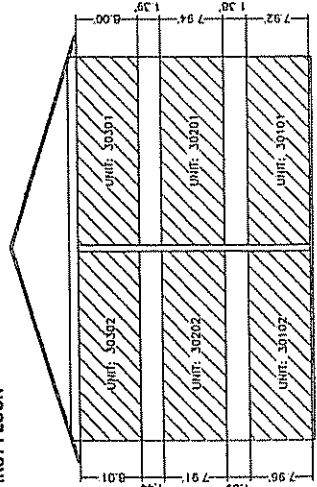
SURVEYED BY: SCOTT BOROWSKI, WILLIAM COLLINS, MIKE FESSLER, NATHAN ALLEY, CHAD BURDETTE, PRESTON JUDDSON

PLAT BOOK 31, SEPTEMBER 29, 2005
 PARCEL 3-14
 REV. DECEMBER 21, 2005

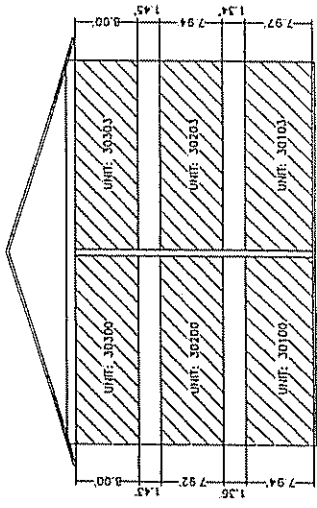
BURGESS & NIPLÉ



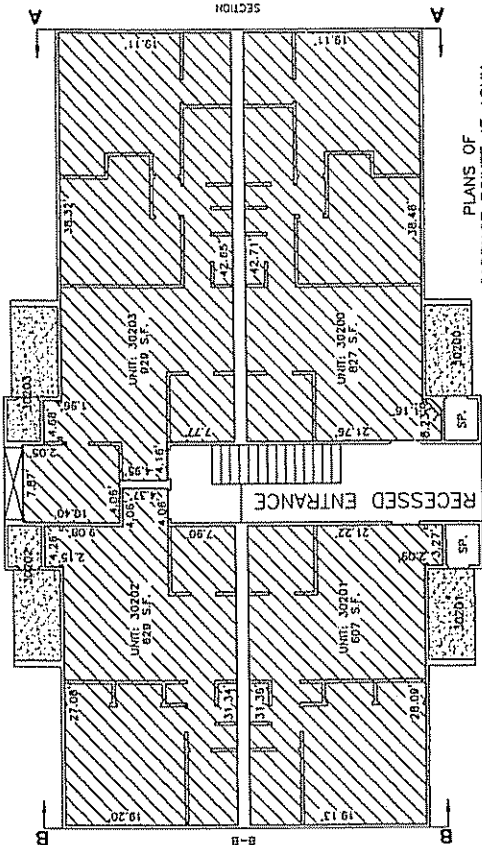
FIRST FLOOR



- LEGEND**
- COMMON ELEMENT
 - UNIT
 - LIMITED COMMON ELEMENT, 15100 INDICATES UNIT TO WHICH LIMITED ELEMENT IS ASSIGNED
 - EXTERIOR ENCLOSURES (AT FIRST FLOOR)
 - SPRINKLER ROOM



SECTION A-A



SECOND FLOOR

PLANS OF CARRIAGE POINTE AT AQUILA ON PARCELS 31, B, AND 3K VILLAGES OF AQUILA SECTION ONE REMAINDER OF PARCEL 31--31--000 VILLAGES OF AQUILA SECTION TWO PLAT BOOK 32 PAGES 162-164 PLAT BOOK 30 PAGE 248

VILLAGES OF AQUILA PARCEL 31--31--000 SECTION THREE PLAN BOOK 31 PAGE 218
 SCALE: 1"=8' REV. DECEMBER 21, 2005

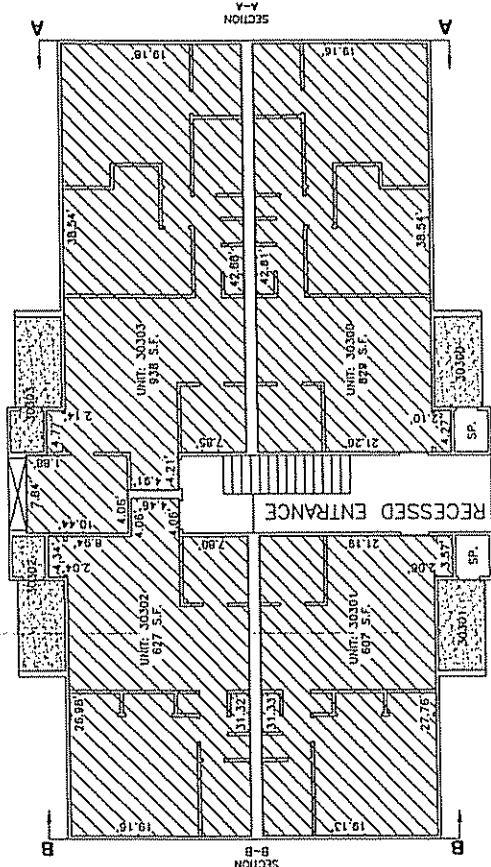


BURGESS & NIPLÉ
 ARCHITECTS & ENGINEERS
 141 RICHMOND PARK DRIVE, SUITE 100, WESLEY CHURCH, VA 24153
 PH: (703) 469-5544 FAX: (703) 469-5524

SURVEYED BY: SCOTT BOROWSKI, WILLIAM COLLINS, MIKE FESSLER, NATHAN ALLEY, CHAD BURRETTE, PRESTON JUDSON

SHEET 5 OF 30

JOB NO. 41417



THIRD FLOOR

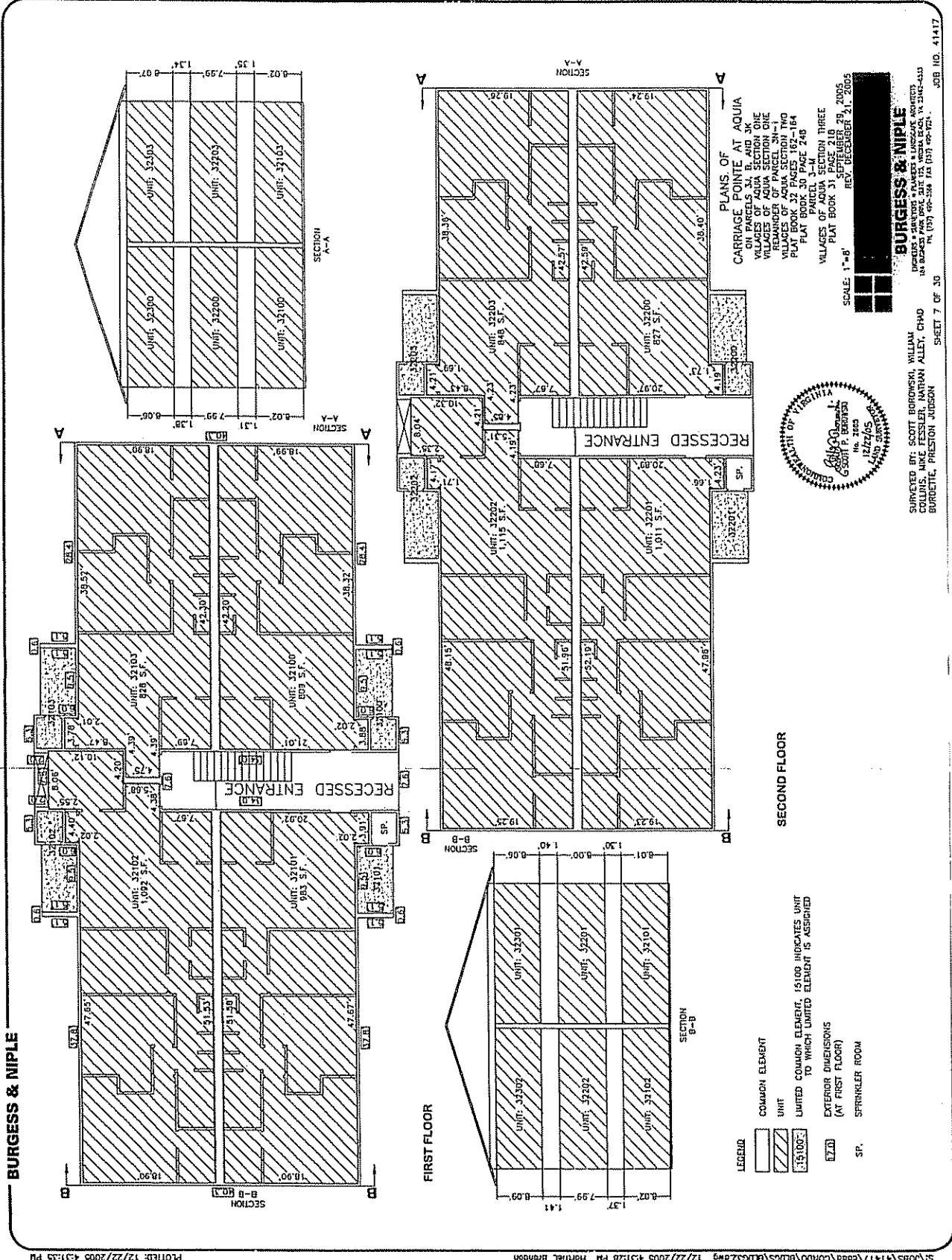
- LEGEND
- [Diagonal Hatching] COMMON ELEMENT
 - [Stippled] UNIT
 - [Numbered Box] LIMITED COMMON ELEMENT, #5100 INDICATES UNIT TO WHICH LIMITED ELEMENT IS ASSIGNED
 - [Double Line] EXTERIOR DIMENSIONS (AT FIRST FLOOR)
 - [SP.] SPRINKLER ROOM

PLANS OF
CARRIAGE POINTE AT AQUIA
ON PARCELS 30301-30305
VILLAGES OF AQUIA SECTION ONE
REMAINDER OF PARCEL 30-1
VILLAGES OF AQUIA SECTION TWO
PUBLIC RECORDS BOOK 164
PLAT BOOK 30 PAGE 248
PARCEL 3-M
VILLAGES OF AQUIA SECTION THREE
PLAT BOOK 31 SEPTEMBER 29, 2005
REV. DECEMBER 21, 2005



SCALE: 1"=8'

SUPPLIED BY: SCOTT BOROWSKI, WILLIAM COLLINS, MIKE FESSLER, NATHAN ALLY, CHAO BURDETTE, PRESTON JUDSON



BURGESS & NIPLE

PLOTTED: 12/22/2005 4:31:25 PM

S:\085\4117\cadd\cadd\BLDGS\BLDG32.dwg 12/22/2005 4:31:20 PM Horizontal Brendon

- LEGEND**
- COMMON ELEMENT
 - UNIT
 - UNITED COMMON ELEMENT, 15'00" INDICATES UNIT TO WHICH LIMITED ELEMENT IS ASSIGNED
 - EXTERIOR DIMENSIONS (AT FIRST FLOOR)
 - SP. SPRINKLER ROOM



BURGESS & NIPLE

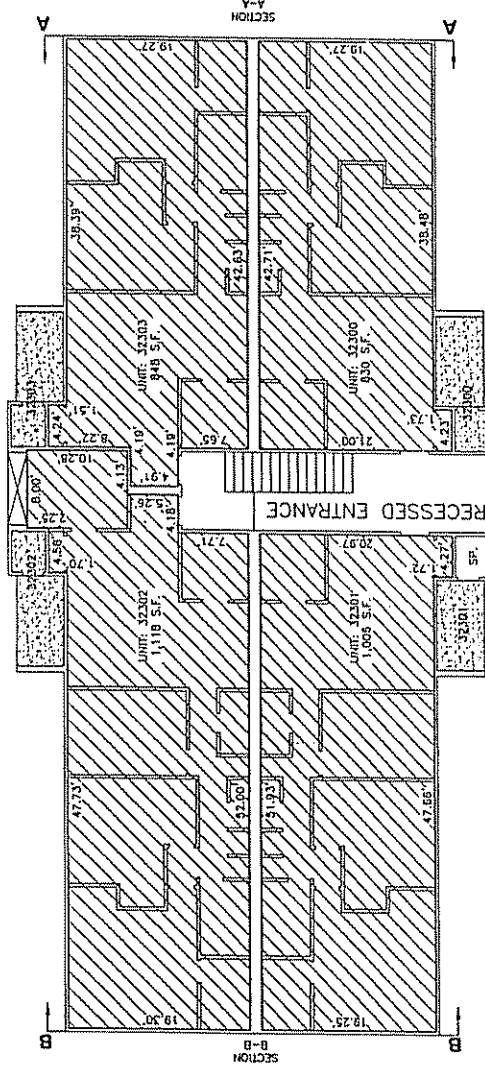
SUPPLIED BY: SCOTT BERGOWSKI, WILLIAM COLLINS, MIKE FESSLER, NATHAN ALLEY, CHAD BURDETTE, PRESTON JUDSON

SHEET 7 OF 30

JOB NO. 41117

PLANS OF CARRIAGE POINTE AT AQUIA ON PARCELS 31, B, AND 3K VILLAGES OF AQUIA SECTION ONE REMAINDER OF PARCEL 3H-1 VILLAGES OF AQUIA SECTION TWO PARCELS 31, B, AND 3K PLAN BOOK 30 PAGE 248 PARCEL 3-N VILLAGES OF AQUIA SECTION THREE PLAN BOOK 31 PAGE 210 REV. DECEMBER 21, 2005

SCALE: 1"=8'



THIRD FLOOR

- LEGEND
- [Hatched Box] COMMON ELEMENT
 - [White Box] UNIT
 - [Box with 15100] LIMITED COMMON ELEMENT, 15100 INDICATES UNIT TO WHICH LIMITED ELEMENT IS ASSIGNED
 - [Box with 15100] EXTERIOR DIMENSIONS (AT FIRST FLOOR)
 - [SP.] SPRINKLER ROOM

PLANS OF
CARRIAGE POINTE AT AQUIA
ON PARCELS J, B, AND JK
VILLAGES OF AQUIA SECTION ONE
REMAINDER OF PARCEL JN-1
VILLAGES OF AQUIA SECTION TWO
PLAT BOOK 32 PAGES 162-164
PARCEL JN-1
PARCEL JN-2
VILLAGES OF AQUIA SECTION THREE
PLAT BOOK 31 PAGE 218
REV. DECEMBER 21, 2005

SCALE: 1"=8'



BURGESS & NIPLÉ

SCOTT P. BOROWSKI, WILLIAM COLLINS, MIKE FESSLER, NATHAN ALLEY, CHAD BURDETTE, PRESTON JIRDSON

SHEET B OF J0

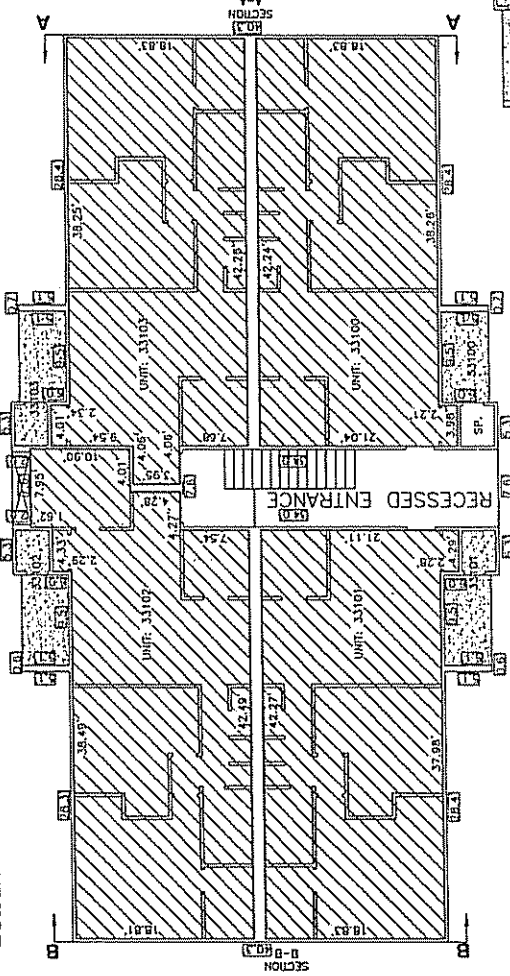
JOB NO. 41417



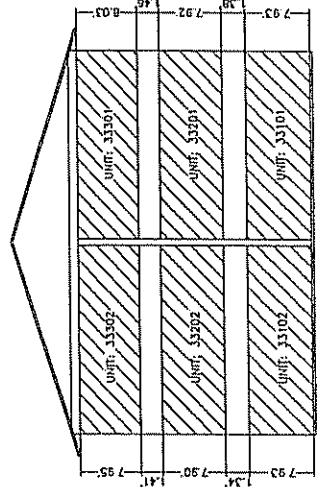
REGISTERED PROFESSIONAL ENGINEER
COMMONWEALTH OF VIRGINIA
No. 2876
ISSUED 10/15/2004
EXPIRES 10/15/2008
SCOTT P. BOROWSKI

BURGESS & NIPLÉ

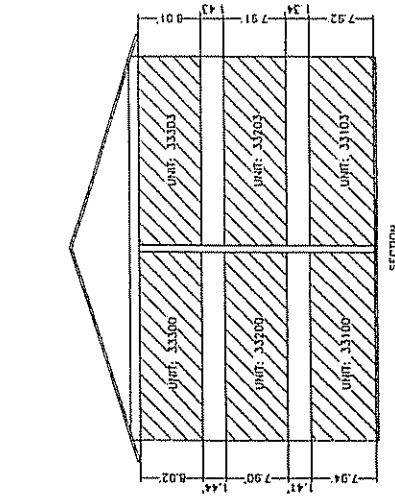
PLOTTED: 12/22/2005 2:22:17 PM S:\055\4147\cadd\02\07\BDC5\BDC5.dwg 12/22/2005 2:32:06 PM Horrell Dvanden



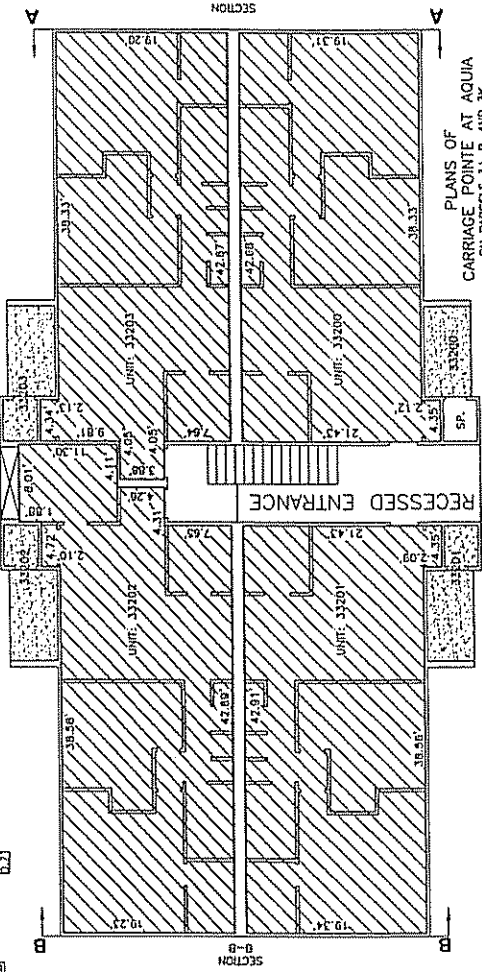
FIRST FLOOR



SECTION A-A



SECTION B-B



SECOND FLOOR

- LEGEND**
- COMMON ELEMENT
 - UNIT
 - LIMITED COMMON ELEMENT, 15100 INDICATES UNIT TO WHICH LIMITED ELEMENT IS ASSIGNED
 - EXTERIOR DIMENSIONS (AT FIRST FLOOR)
 - SP. SPRINKLER ROOM

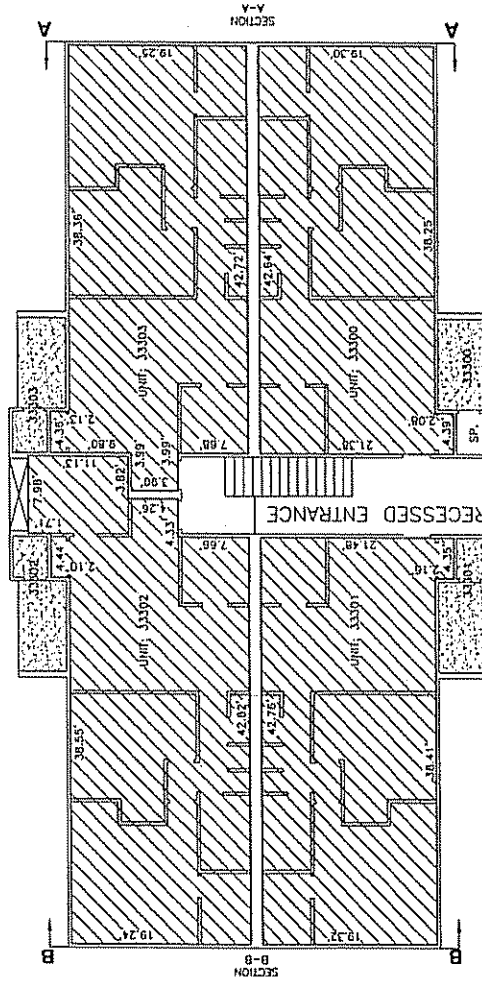


PLANS OF CARRIAGE POINTE AT AQUA
 ON PARCELS 3A, B, AND 3K
 VILLAGES OF AQUA SECTION ONE
 VILLAGES OF AQUA SECTION TWO
 VILLAGES OF AQUA SECTION THREE
 PLAT BOOK 32 PAGES 162-164
 PLAT BOOK 30 PAGE 249
 PLAT BOOK 31 PAGE 218
 REV. DECEMBER 21, 2005



BURGESS & NIPLÉ
 ARCHITECTS & PLANNERS & LANDSCAPE ARCHITECTS
 141 BURNING WOOD DRIVE, SUITE 100
 ANN ARBOR, MI 48106-3308 FAX (734) 969-7624

SURVEYED BY: SCOTT BOROWSKI, WILLIAM COLLINS, MIKE FESSLER, ANTHONY ALLEY, CHAD BURDETTE, PRESTON JOHNSON
 SHEET 9 OF 30



THIRD FLOOR

- LEGEND
- COMMON ELEMENT
 - UNIT
 - UNIT 3300
 - EXTERIOR DIMENSIONS (AT FIRST FLOOR)
 - SP. SPRINKLER ROOM
- COMMON ELEMENT, 15100 INDICATES UNIT TO WHICH LIMITED ELEMENT IS ASSIGNED

PLANS OF CARRIAGE POINTE AT AQUA ON PARCELS 3J, B, AND 3K VILLAGES OF AQUA SECTION ONE REMAINDER OF PARCEL 3H-1 VILLAGES OF AQUA SECTION TWO PLAT BOOK 32 PAGES 102-164 PLAN PARCELS 3-4E 4-6 VILLAGES OF AQUA SECTION THREE PLAT BOOK 31 PAGES 218-248 REV. DECEMBER 21, 2005

SCALE: 1"=8'



BURGESS & NIPLÉ

SUPERVISED BY: SCOTT BOROWSKI, WILLIAM COLLINS, MARK FESSLER, NATHAN ALLEY, CHAD BURDETTE, PRESTON JUDSON

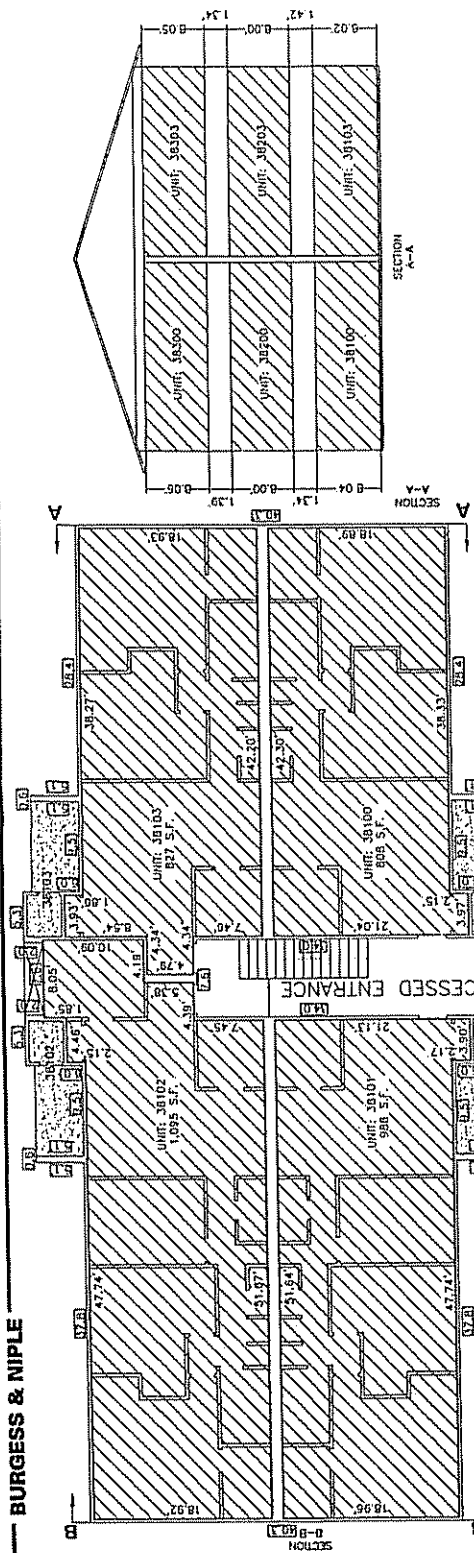
15100

15100

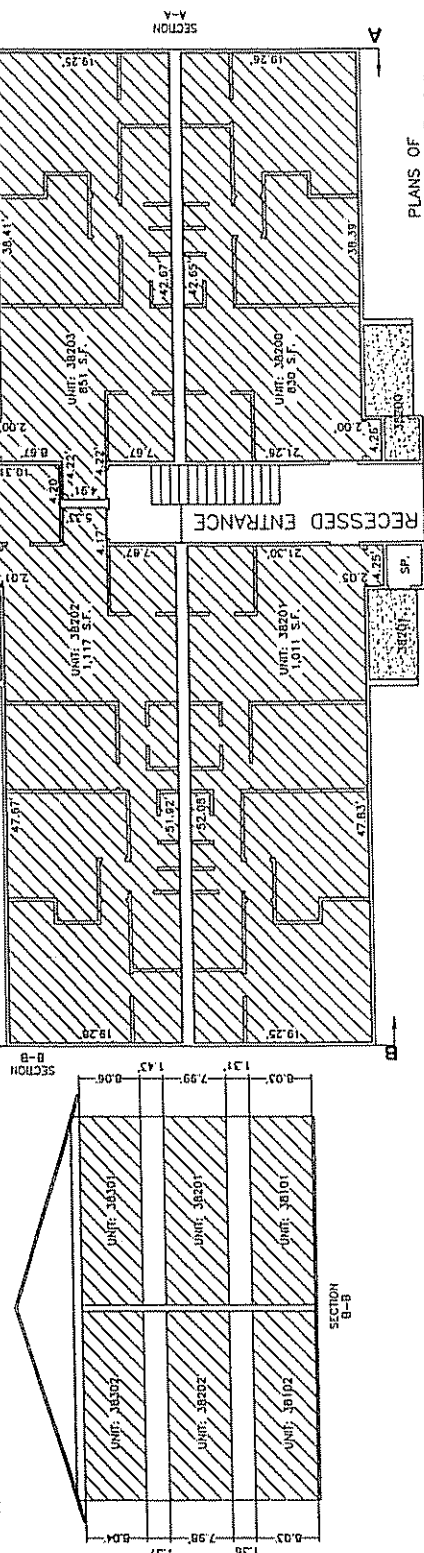
JOB NO. 4141Z

SHEET 10 OF 30

BURGESS & NIPLÉ



FIRST FLOOR



SECOND FLOOR

- LEGEND**
- COMMON ELEMENT
 - UNIT
 - LIMITED COMMON ELEMENT 15,000 INDICATES UNIT TO WHICH LIMITED ELEMENT IS ASSIGNED
 - 15,000
 - EXTERIOR DIMENSIONS (AT FIRST FLOOR)
 - SP. SPRINKLER ROOM

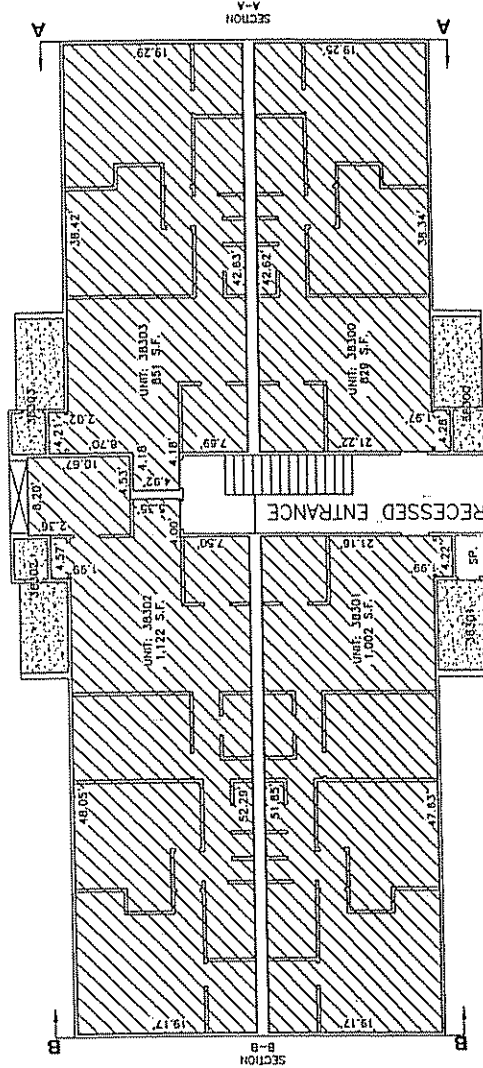
PLANS OF
CARRIAGE POINTE AT AQUIA
 VILLAGES OF AQUIA SECTION ONE
 VILLAGES OF AQUIA SECTION TWO
 REMAINDER OF PARCEL 3H-1
 VILLAGES OF AQUIA PARCELS 162-164
 PLAT BOOK 30 PAGES 248
 PARCEL 3-M
 VILLAGES OF AQUIA SECTION THREE
 PLAT BOOK 30 SEPTEMBER 29, 2005
 REV. DECEMBER 21, 2005



BURGESS & NIPLÉ
 12142106
 12142106
 SURVEYED BY: SCOTT BOROWSKI, WILLIAM COLLINS, MIKE FESSLER, NATHAN ALLEY, CHAD BURDETTE, PRESTON JUDSON

SCALE: 1"=30'
 JOB NO. 41417
 SHEET 11 OF 30

BURGESS & NIPLE



THIRD FLOOR

- LEGEND
- COMMON ELEMENT
- UNIT
- LIMITED COMMON ELEMENT 15.103 INDICATES UNIT TO WHICH LIMITED ELEMENT IS ASSIGNED
- EXTERIOR DIMENSIONS (AT FIRST FLOOR)
- SP. SPRINKLER ROOM

PLANS OF
CARRIAGE POINTE AT AQUIA
ON PARCELS 3B AND 3C
VILLAGES OF AQUA SECTION ONE
REMAINDER OF PARCEL 3H-1
VILLAGES OF AQUA SECTION TWO
PARCELS 3A, 3B, 3C, 3D, 3E, 3F, 3G
PLAT BOOK 30 PAGE 74B
PARCEL 3-1
VILLAGES OF AQUA SECTION THREE
PLAT BOOK 31 PAGE 74B
REVISIONS:
REV. 11/2005
REV. 12/2005

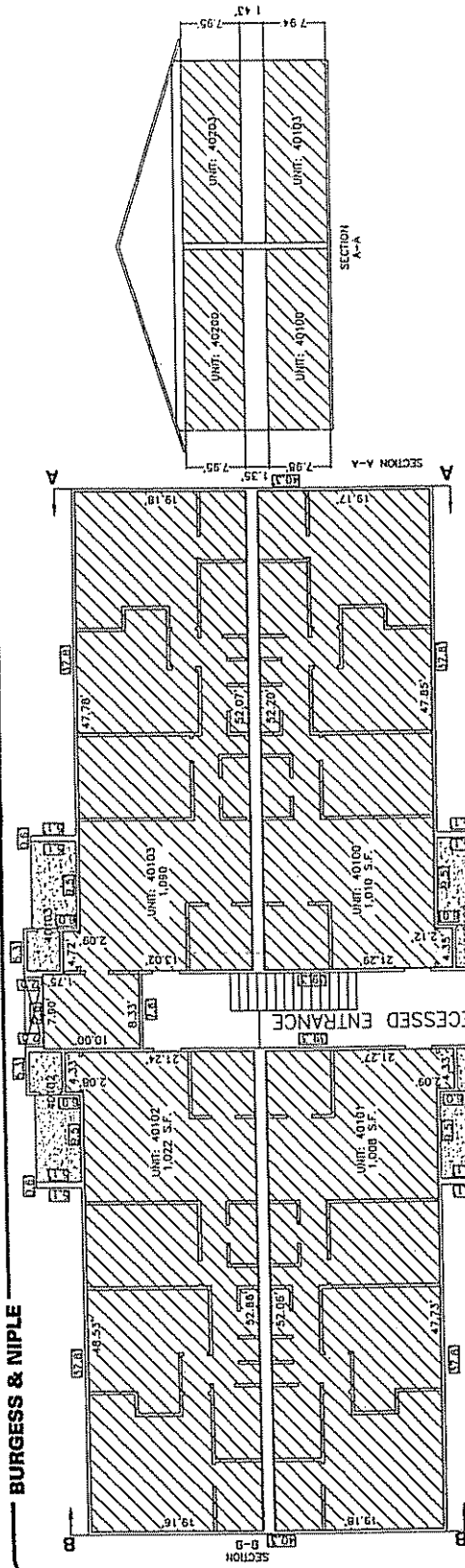
SCALE: 1"=30'

BURGESS & NIPLE
ARCHITECTS
1517 PINEY BLVD. SUITE 101
DALLAS, TEXAS 75205
PH: (214) 424-5400 FAX: (214) 424-5401

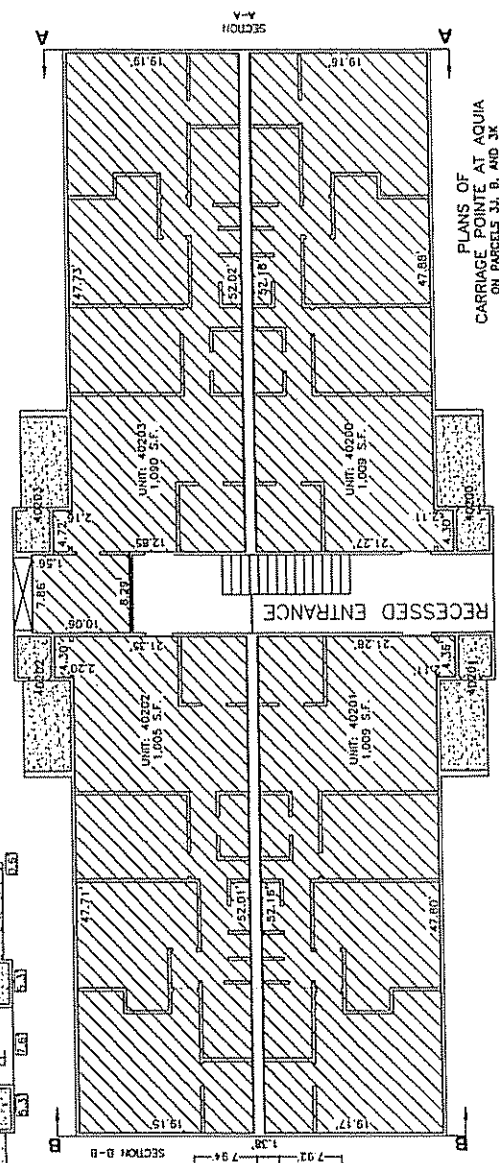


SURVEYED BY: SCOTT BROWNE, WILLIAM
COLLINS, MIKE FESSLER, HATHAN ALLEY, CHAD
BOURDETTE, PRESTON JURDSON

BURGESS & NIPLÉ



FIRST FLOOR



SECOND FLOOR

- LEGEND**
- COMMON ELEMENT
 - UNIT
 - LIMITED COMMON ELEMENT, 15100 INDICATES UNIT TO WHICH LIMITED ELEMENT IS ASSIGNED
 - EXTERIOR DIMENSIONS (AT FIRST FLOOR)
 - SP. SPRINKLER ROOM

PLANS OF CARRIAGE POINTS AT AQUIA PARCELS 1B AND 3K VILLAGES OF AQUA SECTION ONE REMAINDER OF PARCEL 3H-100 VILLAGE OF AQUA SECTION TWO PLAT BOOK 30 PAGES 182-184 PARCEL 3-14 VILLAGES OF AQUA SECTION THREE PLAT BOOK 31 SEPTEMBER 29, 2005

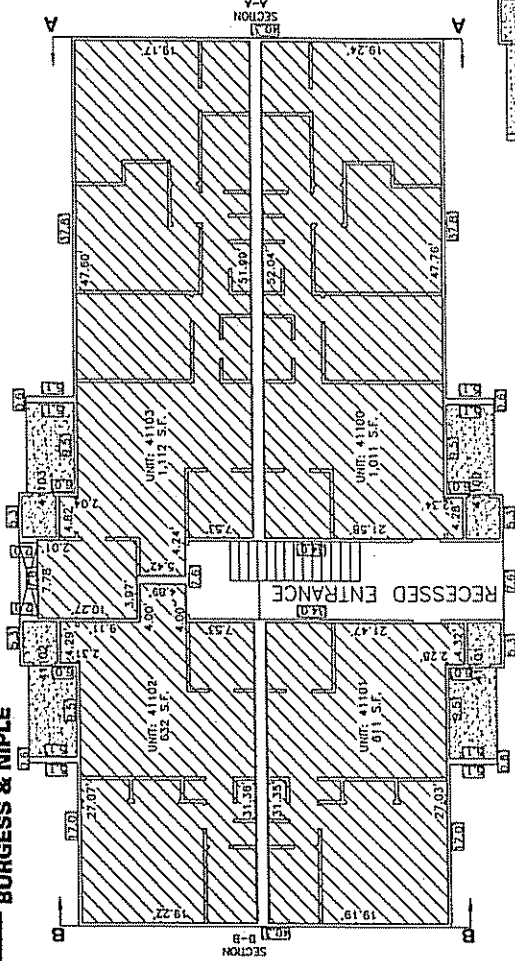


SCALE: 1"=30'
 REV. DECEMBER 21, 2005

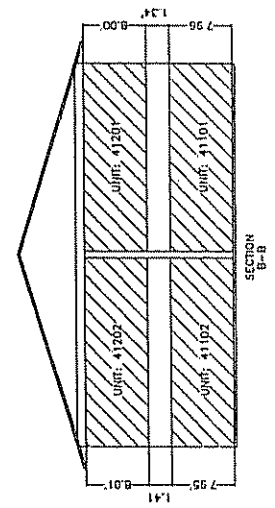
BURGESS & NIPLÉ
 ARCHITECTS & PLANNERS • LANDSCAPE ARCHITECTS
 184 BATES PARK DRIVE, SUITE 103, WENONA BEACH, FL 32465-6333
 TEL: (904) 666-5588 FAX: (904) 666-8121

SURVEYED BY: SCOTT BOROWSKI, WILLIAM COLLINGS, MIKE FESSLER, NATHAN ALLEY, CHAD BURDETTE, PRESTON JUSSON

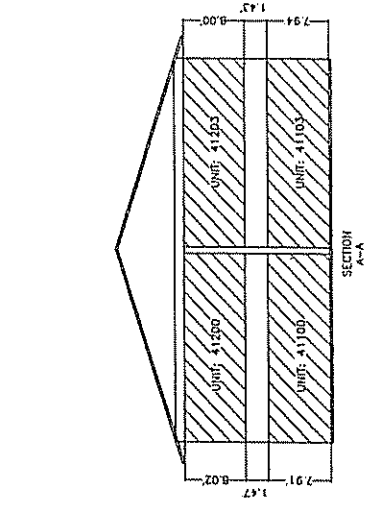
BURGESS & NIPLE



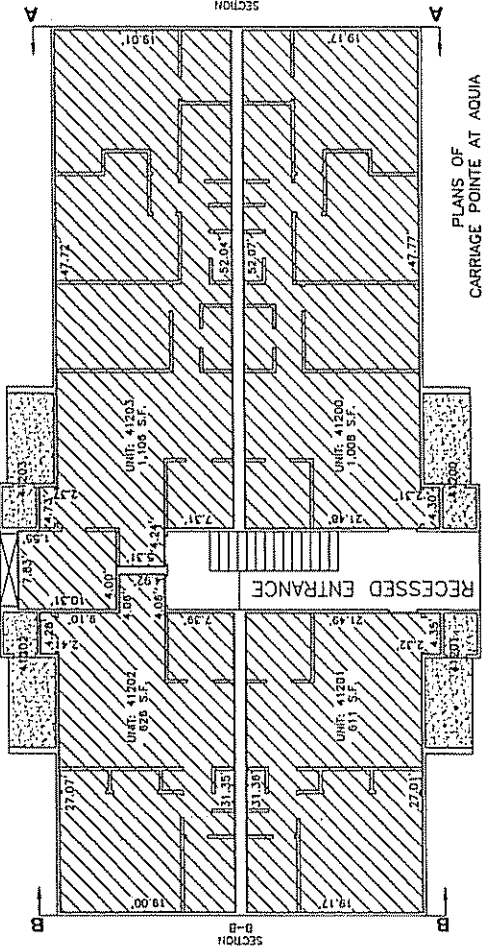
FIRST FLOOR



SECTION A-A



SECTION B-B



SECOND FLOOR

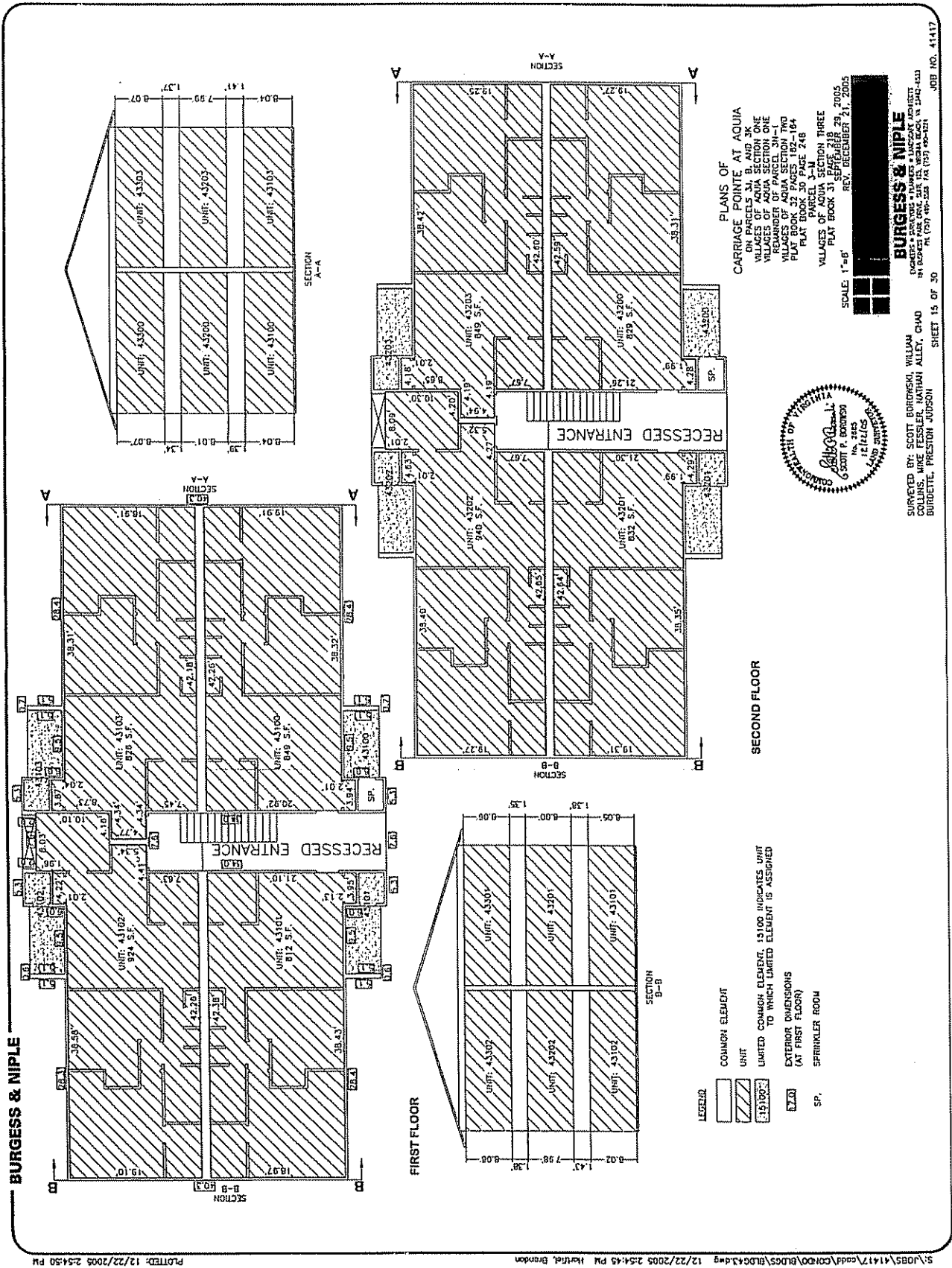
- LEGEND**
- COMMON ELEMENT
 - UNIT
 - LIMITED COMMON ELEMENT, 15100 INDICATES UNIT TO WHICH LIMITED ELEMENT IS ASSIGNED
 - EXTERIOR DIMENSIONS (AT FIRST FLOOR)
 - SP. SPRINKLER ROOM

PLANS OF CARRIAGE POINTE AT AQUIA
 OF PARCELS IN SECTION ONE
 VILLAGES OF AQUIA SECTION ONE
 REMAINDER OF PARCEL JN-1
 VILLAGES OF AQUIA SECTION TWO
 PARCELS JN-2, JN-3, JN-4
 PLAT BOOK 30 PAGE 248
 PARCEL 3-M
 VILLAGES OF AQUIA SECTION THREE
 PLAT BOOK 30 SEPTEMBER 29, 2005
 REV. DECEMBER 21, 2005



BURGESS & NIPLE
 SURVEYED BY: SCOTT BOROWSKI, WILLIAM COLLINGS, MIKE FESSLER, HATHAN ALLEY, CHAD BURDETTE, PRESTON JUDSON

SCALE: 1"=8'
 SHEET 14 OF 30
 JOB NO. 41417



BURGESS & NIPLÉ

PLANS OF
CARRIAGE POINTE AT AQUIA
ON PARCELS 31, 32 AND 33
VILLAGES OF AQUIA SECTION ONE
REMAINDER OF PARCEL 31-1
VILLAGES OF AQUIA SECTION TWO
PLAY BOOK 30 PAGE 104
PLAY BOOK 30 PAGE 248
PARCEL 3-1
VILLAGES OF AQUIA SECTION THREE
PLAY BOOK 31 SEPTEMBER 29, 2005
REV. DECEMBER 21, 2005



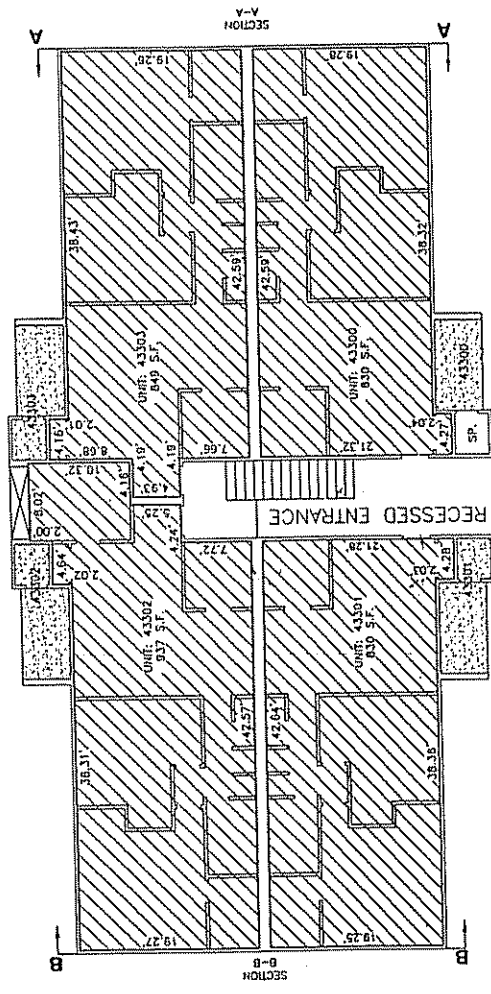
BURGESS & NIPLÉ
REGISTERED ARCHITECTS
141 BOSTON PARK DRIVE, SUITE 102, WEST BUCKLE, MA 01463
PH: (978) 489-5228 FAX: (978) 995-1651



SUPERVISED BY: SCOTT BURGESS, WILLIAM COLLINS, MIKE FESSLER, NATHAN ALLEY, CHAD BURDETTE, PRESTON JUDSON

SHEET 15 OF 30

JOB NO. 41417



THIRD FLOOR

- LEGEND
- COMMON ELEMENT
 - UNIT
 - LIMITED COMMON ELEMENT, 15100 INDICATES UNIT TO WHICH LIMITED ELEMENT IS ASSIGNED
 - 15100
 - EXTERIOR DIMENSIONS (AT FIRST FLOOR)
 - SP. SPRINKLER ROOM

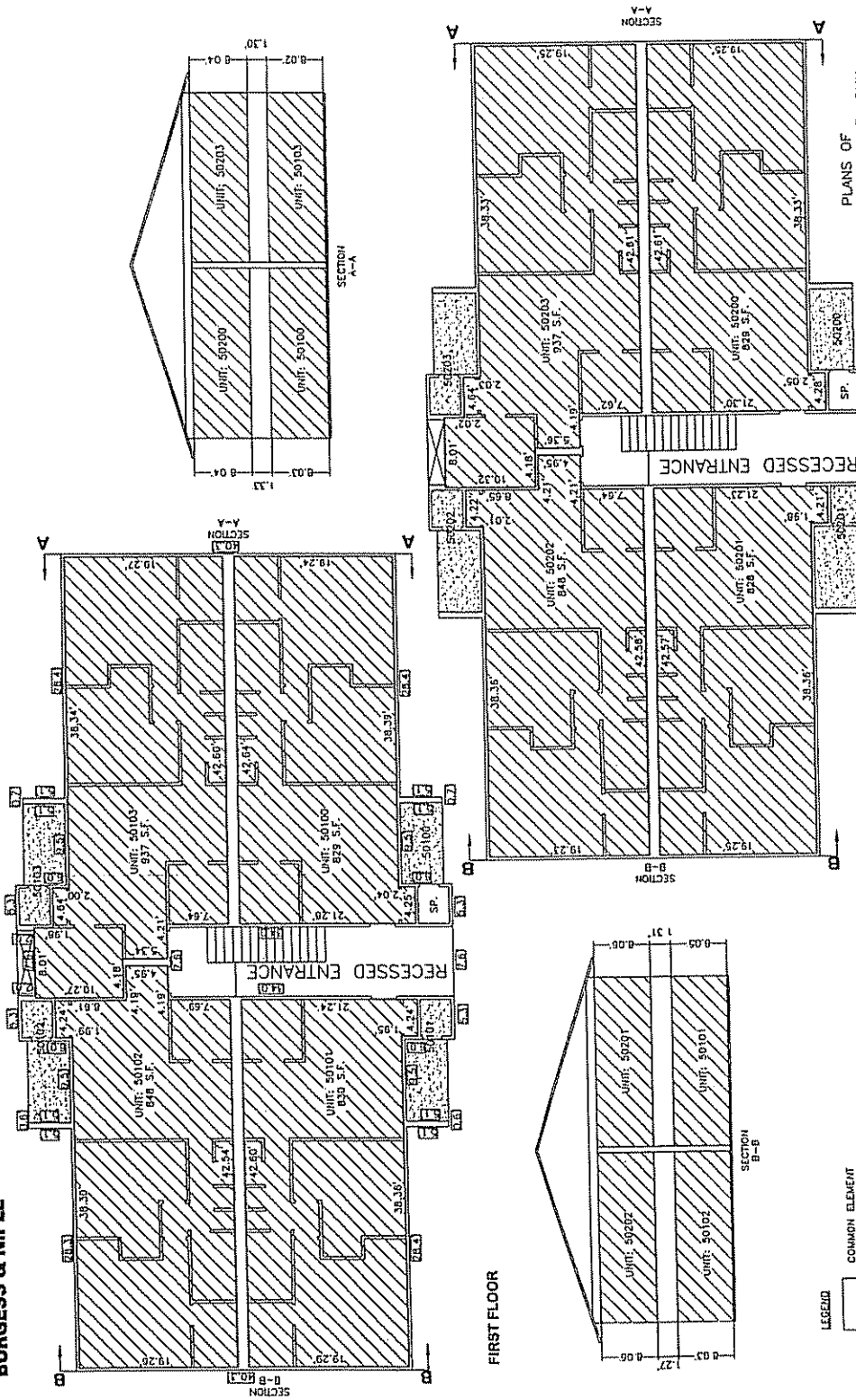
PLANS OF CARRIAGE POINTE AT AQUIA ON PARCELS X, B, AND 3K VILLAGES OF AQUIA SECTION ONE VILLAGES OF AQUIA SECTION TWO REMAINDER OF PARCEL 3K-1 VILLAGES OF AQUIA SECTION TWO PLAT BOOK 32 PAGES 162-164 PLAT BOOK 33 PAGE 246 VILLAGES OF AQUIA SECTION THREE PLAT BOOK 31 PAGE 218 26, 2005 REV. DECEMBER 21, 2005



BURGESS & NIPLÉ
 ENGINEERS & ARCHITECTS
 181 BROADWAY, SUITE 2000, NEW YORK, NY 10038
 TEL: (212) 499-3300 FAX: (212) 499-3274

SURVEYED BY: SCOTT BOROWSKI, WILLIAM COLLINS, MIKE FESSLER, JATHAN ALLEY, CHAD BURDETTE, PRESTON JOHNSON

BURGESS & NIPLÉ



LEGEND

COMMON ELEMENT

UNIT

UNITED COMMON ELEMENT, 15100 INDICATES UNIT TO WHICH UNITED ELEMENT IS ASSIGNED

EXTERIOR DIMENSIONS (AT FIRST FLOOR)

SP. SPRINKLER ROOM

PLANS OF CARRIAGE POINTE AT AQUIA
 ON PARCELS 31, B, AND 3K
 VILLAGES OF AQUIA SECTION ONE
 VILLAGES OF AQUIA SECTION TWO
 VILLAGES OF AQUIA SECTION THREE
 VILLAGES OF AQUIA SECTION FOUR
 VILLAGES OF AQUIA SECTION FIVE
 VILLAGES OF AQUIA SECTION SIX
 VILLAGES OF AQUIA SECTION SEVEN
 VILLAGES OF AQUIA SECTION EIGHT
 VILLAGES OF AQUIA SECTION NINE
 VILLAGES OF AQUIA SECTION TEN
 VILLAGES OF AQUIA SECTION ELEVEN
 VILLAGES OF AQUIA SECTION TWELVE
 VILLAGES OF AQUIA SECTION THIRTEEN
 VILLAGES OF AQUIA SECTION FOURTEEN
 VILLAGES OF AQUIA SECTION FIFTEEN
 VILLAGES OF AQUIA SECTION SIXTEEN
 VILLAGES OF AQUIA SECTION SEVENTEEN
 VILLAGES OF AQUIA SECTION EIGHTEEN
 VILLAGES OF AQUIA SECTION NINETEEN
 VILLAGES OF AQUIA SECTION TWENTY

SCALE: 1"=6'
 REV. DECEMBER 21, 2005



BURGESS & NIPLÉ
 BURGESS & NIPLÉ ARCHITECTS
 1000 WEST MAIN STREET
 SUITE 200
 FARMINGTON, VT 05401
 TEL: (802) 875-1111 FAX: (802) 875-1112

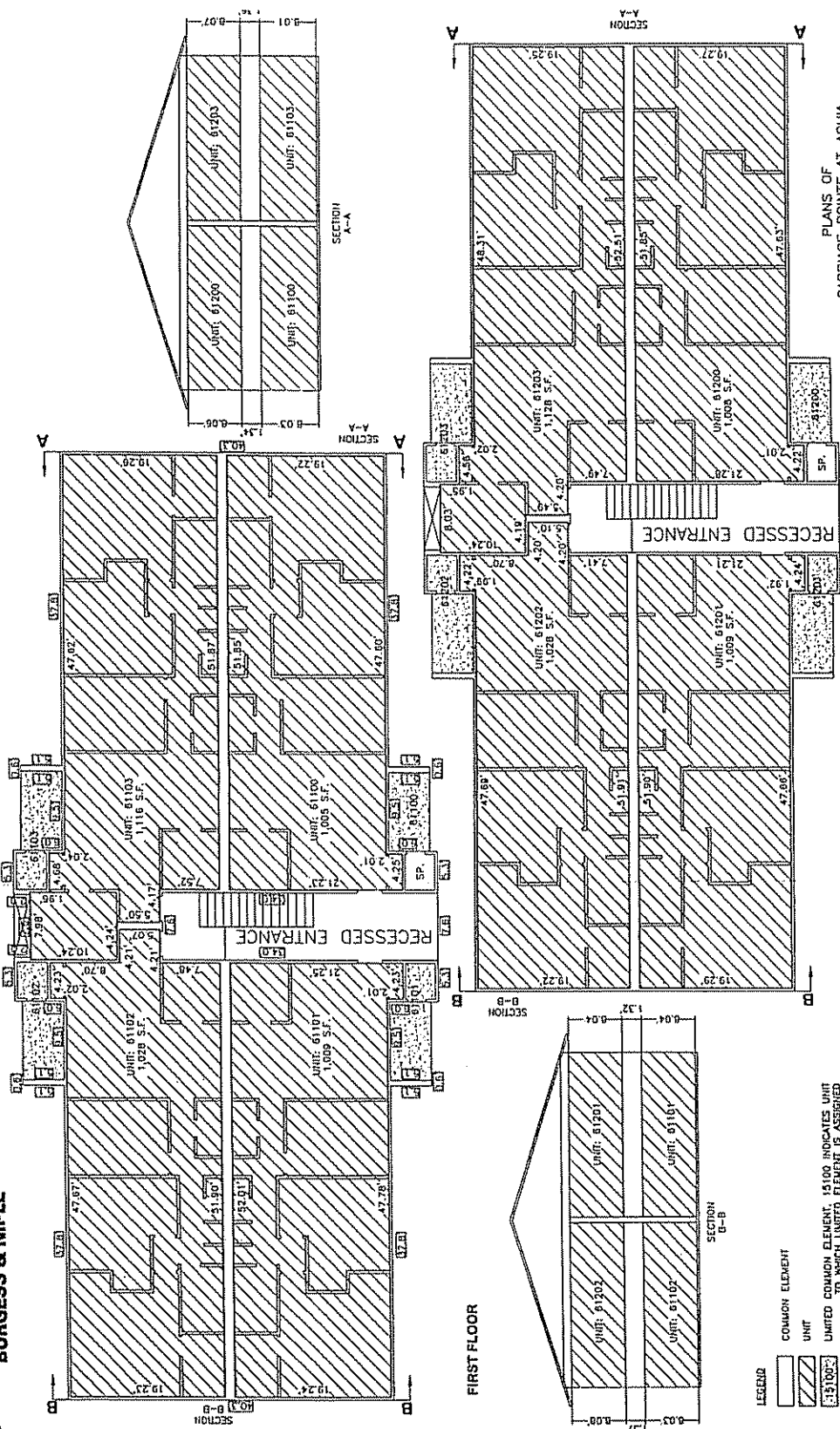
SURVEYED BY: SCOTT BURROWS, WILLIAM COLLINS, MARY ESTHER WINTAN ALLEY, CHAD BUNDITTE, PRESTON JUDSON

PLAT BOOK 31, PAGE 118, 28, 7005
 PLAT BOOK 31, PAGE 119, 29, 7005
 REV. DECEMBER 21, 2005

SHEET 17 OF 30

JOB NO. 41417

BURGESS & NIPLÉ



**PLANS OF
CARRIAGE POINTE AT AQUIA**
ON PARCELS 3A, B, AND 3K
VILLAGES OF AQUA SECTION ONE
VILLAGES OF AQUA SECTION ONE
VILLAGES OF AQUA SECTION TWO
VILLAGES OF AQUA SECTION TWO
PLAT BOOK 32 PAGES 162-164
PLAT BOOK 30 PAGE 248



BURGESS & NIPLÉ
REGISTERED PROFESSIONAL ENGINEERS
NO. 255
LIZIANS
NO. 255
NO. 255

SURVEYED BY: SCOTT BORDOWSKI, WILLIAM
COLLINS, MIKE FESSLER, HATHAN ALLEY, CHAO
BURDETTE, PRESTON JOHNSON

SCALE: 1"=8'
PLAT BOOK 31 PAGE 218
SEPTEMBER 29, 2005
REV. DECEMBER 21, 2005

PLAT BOOK 30 PAGE 248

PLAT BOOK 32 PAGES 162-164
PLAT BOOK 30 PAGE 248

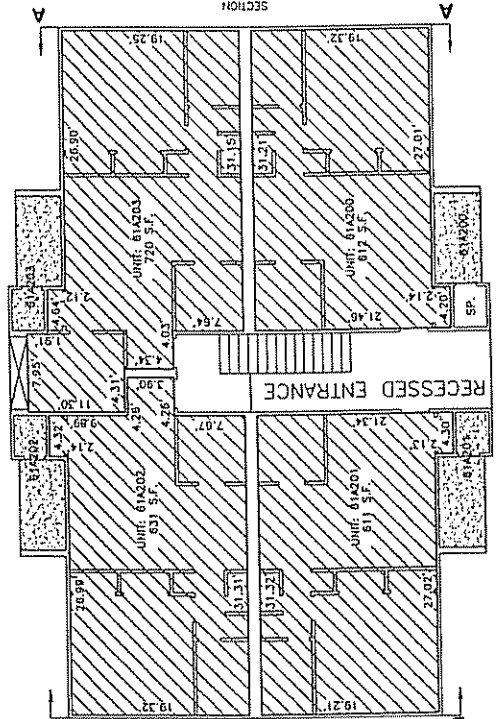
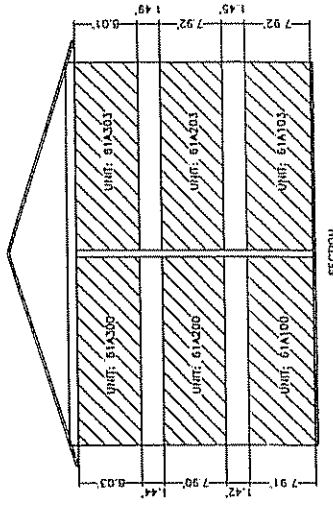
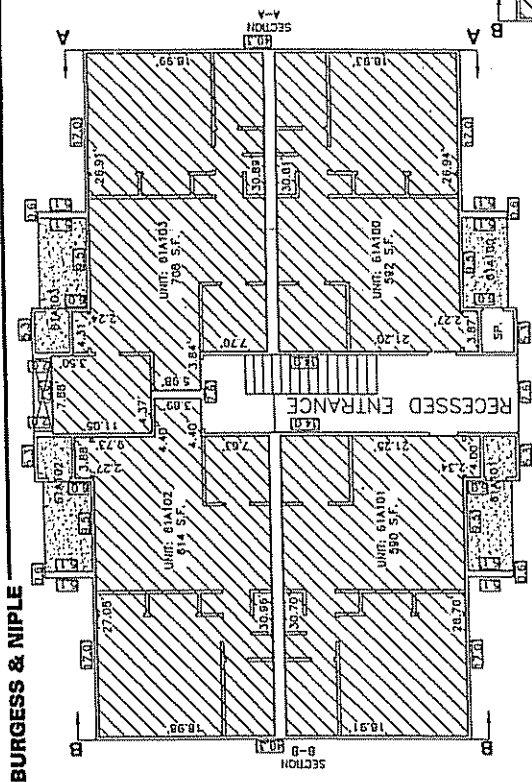
PLAT BOOK 31 PAGE 218
SEPTEMBER 29, 2005
REV. DECEMBER 21, 2005

PLAT BOOK 32 PAGES 162-164
PLAT BOOK 30 PAGE 248

PLAT BOOK 31 PAGE 218
SEPTEMBER 29, 2005
REV. DECEMBER 21, 2005

BURGESS & NIPLÉ

S:\053\117\cadd\CHNO0\BDD5\BDD5\BDD5\12/22/2005 3:03:05 PM 12/22/2005 3:09:14 PM PLOTTED: 12/22/2005 3:09:14 PM



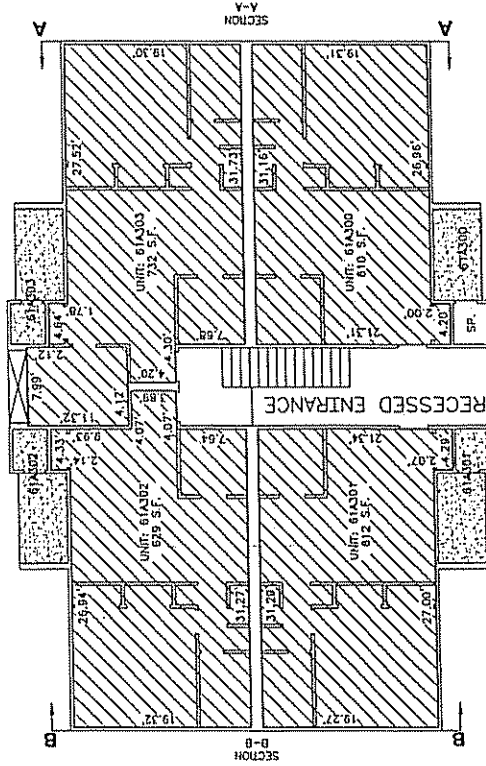
- LEGEND**
- COMMON ELEMENT
 - UNIT
 - LIMITED COMMON ELEMENT TO WHICH LIMITED ELEMENT IS ASSIGNED
 - EXTERIOR DIMENSIONS (AT FIRST FLOOR)
 - SP. SPRINKLER ROOM

PLANS OF CARRIAGE PORCH AT AQUILA VILLAGES OF AQUILA AND 30 VILLAGES OF AQUILA SECTION ONE REMAINDER OF PARCEL 311-11-200 VILLAGES OF AQUILA SECTION TWO PLAT BOOK 22 PAGES 182-184 PLAT BOOK 20 PAGE 248 PARCEL 311-11-200 VILLAGES OF AQUILA SECTION THREE PLAT BOOK 21 SEPTEMBER 18, 2005 REV. DECEMBER 29, 2005



BURGESS & NIPLÉ
 SCOTT P. BURGESS
 LICENSED PROFESSIONAL ENGINEER
 NO. 1472165
 STATE OF WISCONSIN

SURVEYED BY: SCOTT BOROWSKI, WILLIAM COLLINGS, MIKE FESSLER, HATHAN ALLY, CHAD BURDETTE, PRESTON JUDSON



THIRD FLOOR

- LEGEND
- COMMON ELEMENT
 - UNIT
 - LIMITED COMMON ELEMENT, 15100 INDICATES UNIT TO WHICH LIMITED ELEMENT IS ASSIGNED
 - EXTERIOR DIMENSIONS (AT FIRST FLOOR)
 - SPRINKLER ROOM

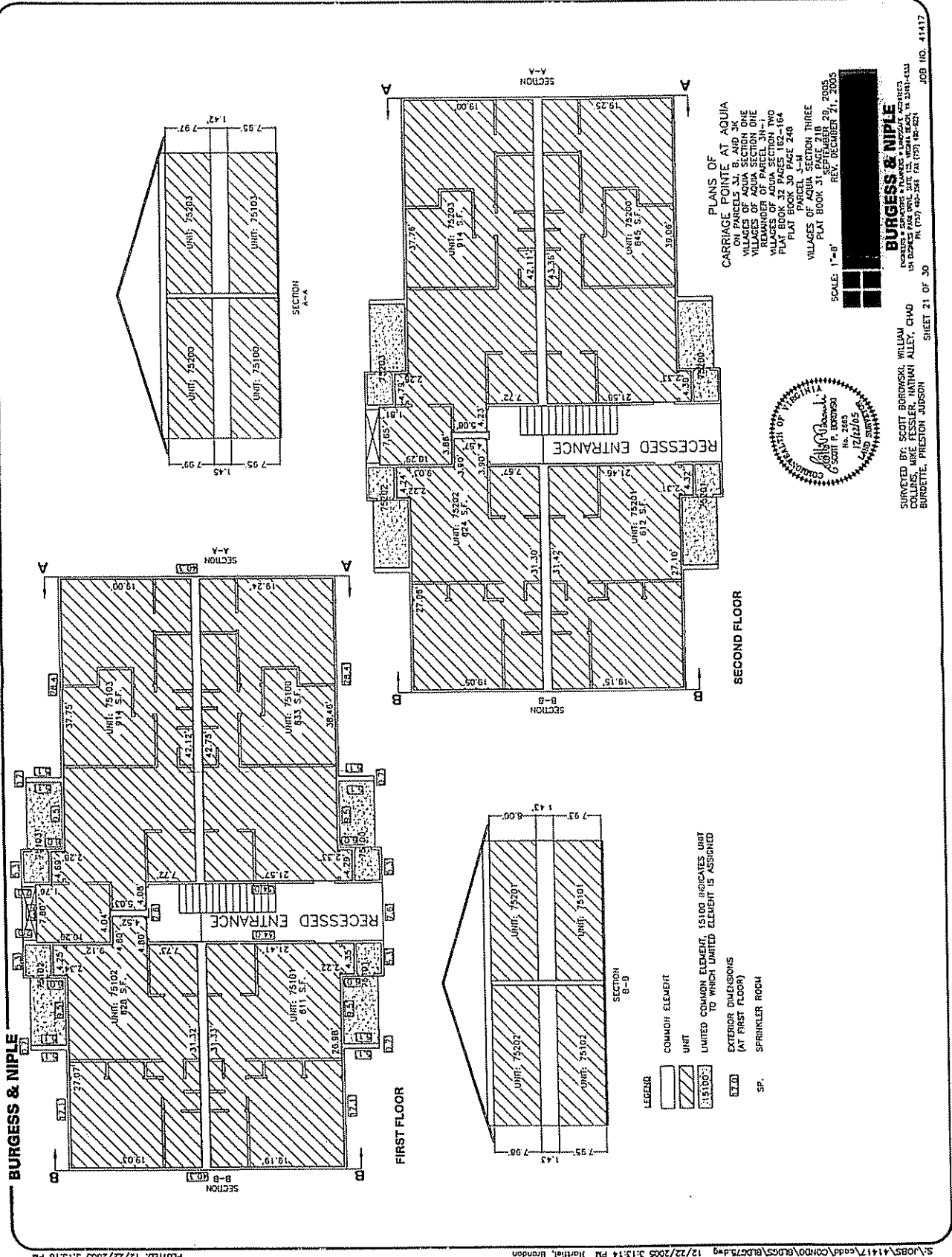
PLANS OF
CARRIAGE POINTE AT AQUA
VILLAGES OF AQUA SECTION ONE
REMAINDER OF PARCEL 3N-10
PLAT BOOK 47 PAGES 162-184
PLAT BOOK 30 PAGE 246
PARCEL 3-11
VILLAGES OF AQUA SECTION THREE
PLAT BOOK 31 SEPTEMBER 29, 2005
REV. DECEMBER 21, 2005



BURGESS & NIPLÉ
REGISTERED PROFESSIONAL ARCHITECTS
141 HENRY STREET, SUITE 102, WINDHAM, VA 22191-4233
PHONE: (703) 466-356 FAX: (703) 707-8251



SURVEYED BY: SCOTT BOROWSKI, WILLIAM COLLINS, MIKE FESSLER, NATHAN ALLY, CHAD BURDETTE, PRESTON JUDSON



BURGESS & NIPLÉ
 ARCHITECTS & PLANNERS
 131 BROADWAY, SUITE 200
 NEW YORK, NY 10038
 TEL: (212) 697-2500 FAX: (212) 697-2501
 WWW.BURGESSANDNIPLÉ.COM

PLANNING SECTION THREE
 VILLAGES OF AQUA SECTION THREE
 FLAT BOOK 31, PAGE 718
 0 SEPTEMBER 2005
 SCALE: 1"=8'
 REV: DECEMBER 21, 2005

SURVEYED BY: SCOTT BOROWSKI, WILLIAM COLLINS, MIKE FESSLER, NATHAN ALLEY, CHAD BURDETTE, PRESTON JURSON

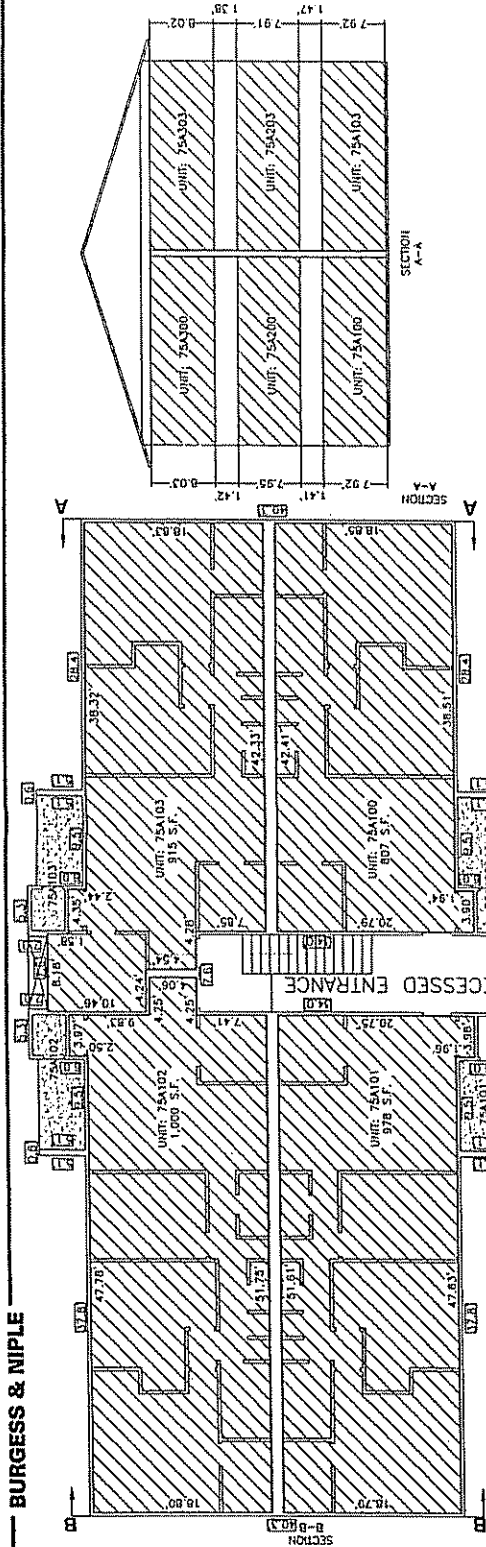
BURGESS & NIPLÉ

SHEET 21 OF 30

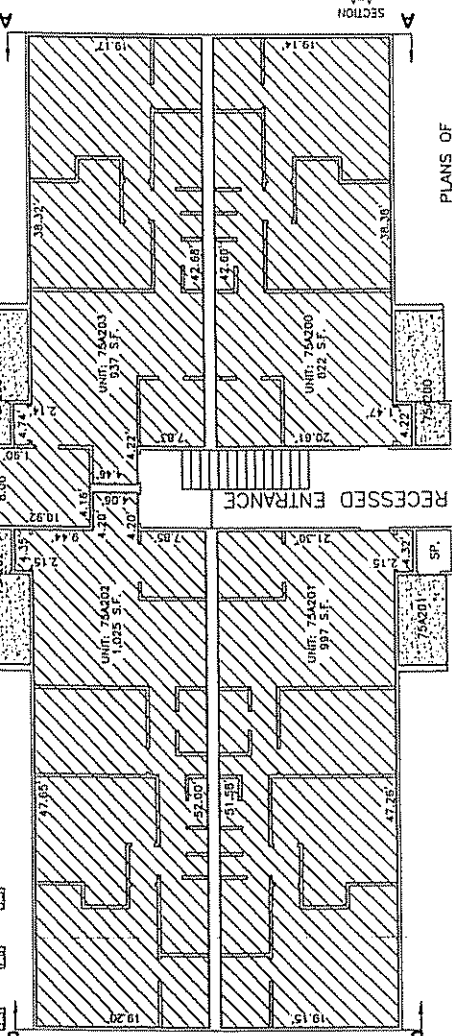
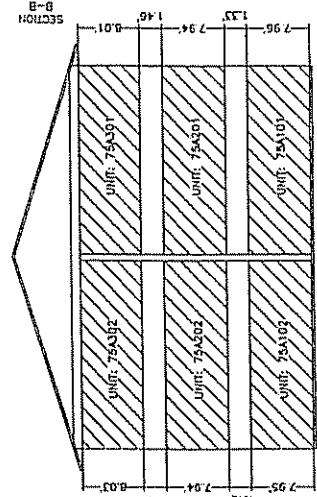
JOB NO. 41417

BURGESS & NIPLÉ

PLOTTED: 12/22/2005 2:00:43 PM



FIRST FLOOR



SECOND FLOOR

- LEGEND**
- [Symbol] COMMON ELEMENT
 - [Symbol] UNIT
 - [Symbol] UNITS COMMON ELEVATE, 15100 INDICATES UNIT TO WHICH LIMITED ELEMENT IS ASSIGNED
 - [Symbol] EXTERIOR DIMENSIONS (AT FIRST FLOOR)
 - [Symbol] SPRINKLER ROOM

PLANS OF CARRIAGE POINTE AT AQUIA ON PARCELS 3A, B, AND 3K VILLAGES OF AQUA SECTION ONE VILLAGES OF AQUA SECTION TWO VILLAGES OF AQUA SECTION THREE

PLAY BOOK 32 PAGES 162-164
PLAY BOOK 30 PAGE 248
PLAY BOOK 31 PAGE 218
PLAY BOOK 33 PAGE 218

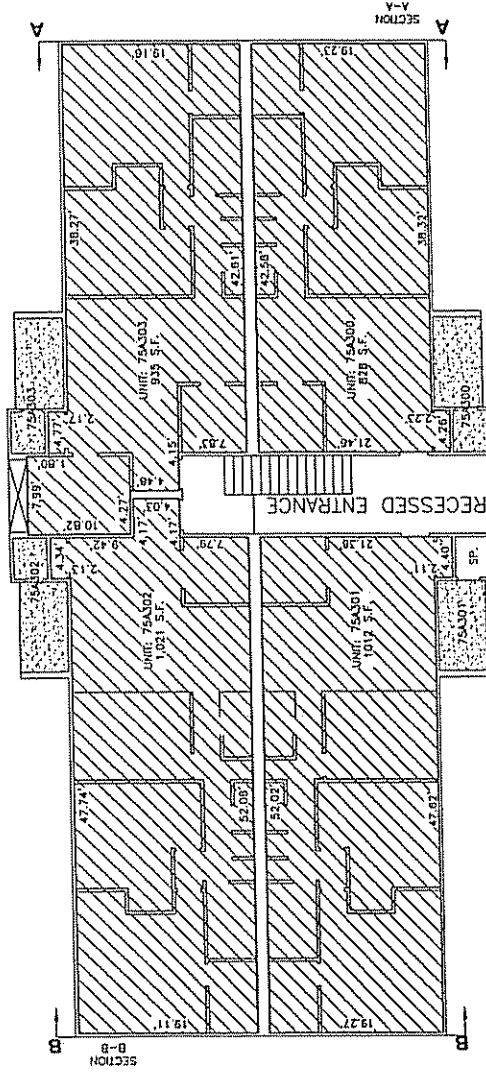
SCALE: 1"=30'
SEPTEMBER 29, 2005
REV. DECEMBER 21, 2005



BURGESS & NIPLÉ
ARCHITECTS
1110 BROADWAY, SUITE 1100
ALEXANDRIA, VA 22304
(703) 462-3000 FAX (703) 462-3001

SURVATED BY: SCOTT BURGESS, WILLIAM COLLINS, MIKE FESSLER, NATHAN ALLET, CHAO BURDETTE, PRESHON JOHNSON

S:\JOBS\4117\cadd\COMMON\BDRS\BDR54.dwg 12/22/2005 2:00:38 PM Hartal, Brandon



THIRD FLOOR

- LEGEND
- [Symbol] COMMON ELEMENT
 - [Symbol] UNIT
 - [Symbol] LIMITED COMMON ELEMENT, 15,000 INDICATES UNIT TO WHICH LIMITED ELEMENT IS ASSIGNED
 - [Symbol] EXTERIOR DIMENSIONS (AT FIRST FLOOR)
 - [Symbol] SPRINKLER ROOM
 - [Symbol] SP.

PLANS OF CARRIAGE POINTE AT AQUA ON PARCELS 31, B, AND 3K VILLAGES OF AQUA SECTION ONE VILLAGES OF AQUA SECTION ONE VILLAGES OF AQUA SECTION TWO VILLAGES OF AQUA SECTION TWO PLAT BOOK 32 PAGES 162-164

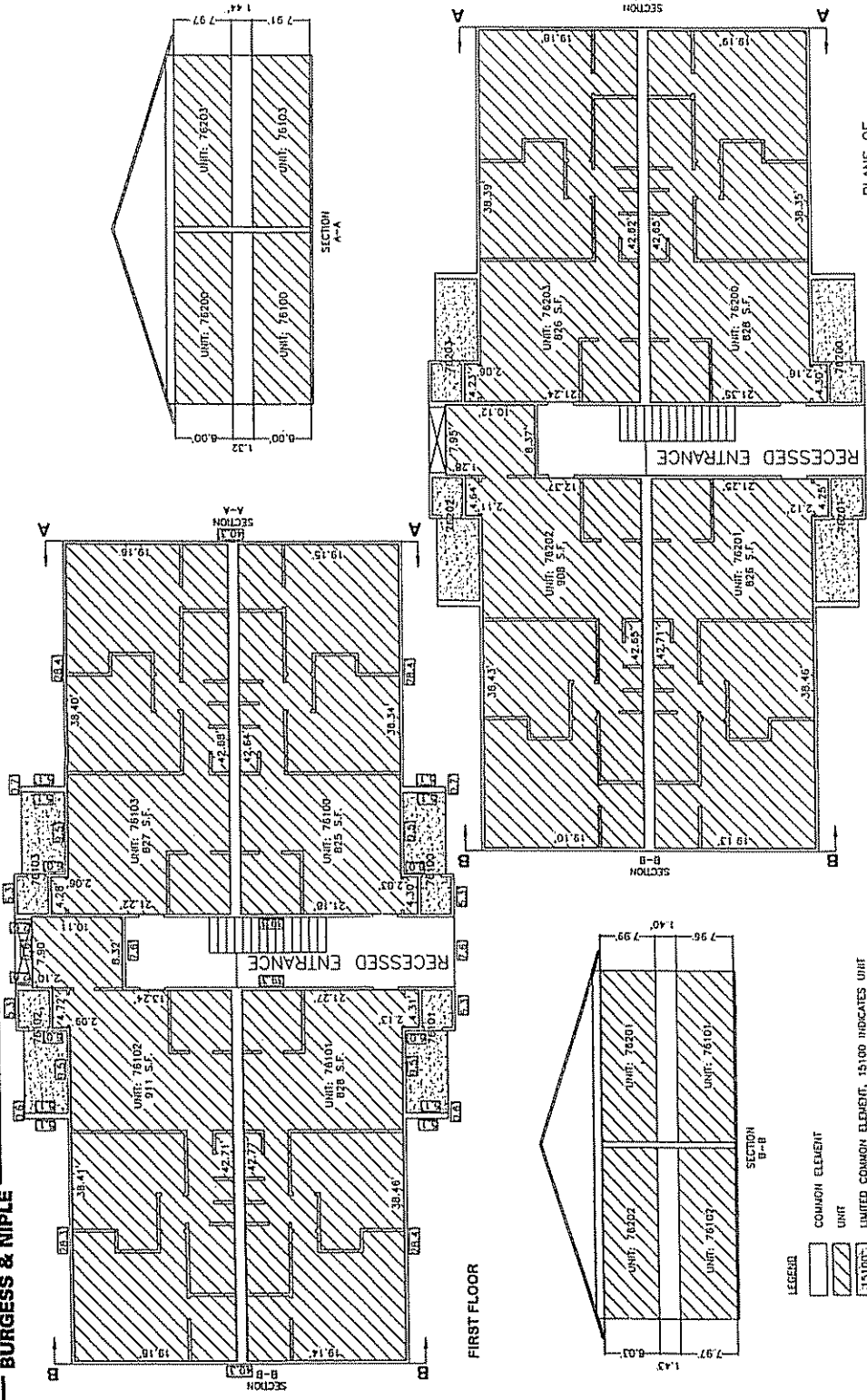
SCALE: 1"=30'
 PLAT BOOK 31 PAGE 218
 PLAT BOOK 32 PAGES 162-164
 REV. SEPTEMBER 29, 2005
 REV. DECEMBER 21, 2005



BURGESS & NIPLÉ
 ARCHITECTS & ENGINEERS
 1410 BROADWAY, SUITE 200
 WASHINGTON, DC 20004
 TEL: (202) 462-2000 FAX: (202) 462-2001

SURVEYED BY: SCOTT BOROWSKI, WILLIAM COLLINS, MIKE FESSLER, NATHAN ALLEY, CHAO BURDETTE, PRESTON JUDDSON

BURGESS & NIPLE



**PLANS OF
CARRIAGE POINTE AT AQUIA**
ON PARCELS A, B, AND 3K
VILLAGES OF AQUIA SECTION ONE
VILLAGES OF AQUIA SECTION ONE
VILLAGES OF AQUIA SECTION TWO
VILLAGES OF AQUIA SECTION TWO
PLAT BOOK 32 PAGES 182-184
PLAT BOOK 30 PAGE 248

PARCEL SECTION THREE
VILLAGES OF AQUIA SECTION THREE
PLAT BOOK 31 PAGE 218
PLAT BOOK 30 PAGE 248
REV. SEPTEMBER 29, 2005
REV. DECEMBER 21, 2005



BURGESS & NIPLE
ARCHITECTS & PLANNERS • LANDSCAPE ARCHITECTS
1400 EAST 17TH AVENUE, SUITE 1400 • DENVER, CO 80202
PH: (303) 733-3333 FAX: (303) 733-3333

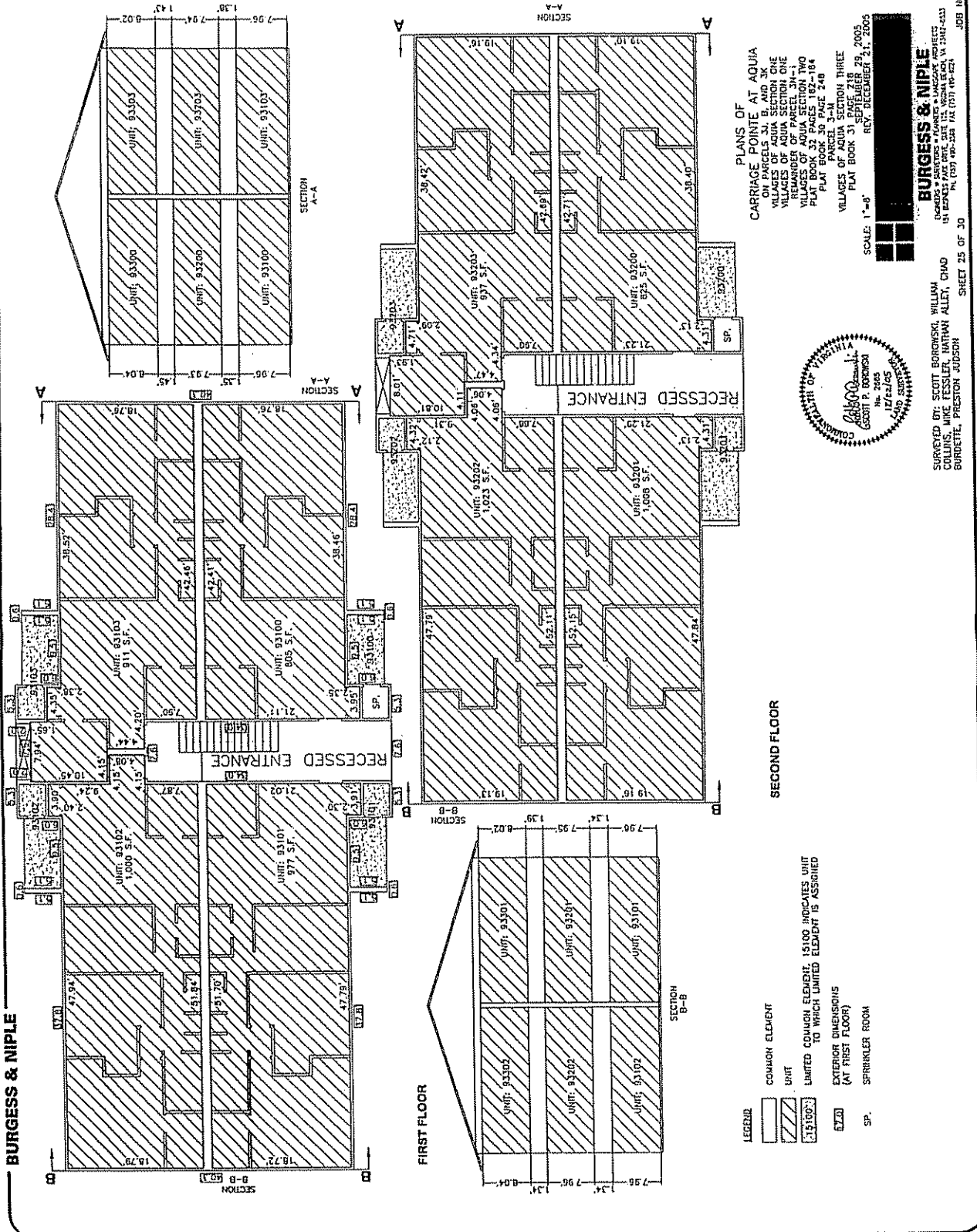


SURVEYED BY: SCOTT BURROWSKI, WILLIAM COLLINGS, MIKE FESSLER, HATHAN ALLEY, CHAD BURGETTE, PRESTON JOHNSON
NOV 14 2005

BURGESS & NIPILE

5:\JOBS\4117\cadd\COMMON\BDCS\BLD3.dwg 12/22/2005 3:30:32 PM Horizontal Elevation

PLOTTED: 12/22/2005 3:30:44 PM



LEGEND

- COMMON ELEMENT
- UNIT
- UNIT 15100 INDICATES COMMON ELEMENT, 15100 INDICATES UNIT TO WHICH LIMITED ELEMENT IS ASSIGNED
- EXTERIOR DIMENSIONS (AT FIRST FLOOR)
- SP. SPRINKLER ROOM

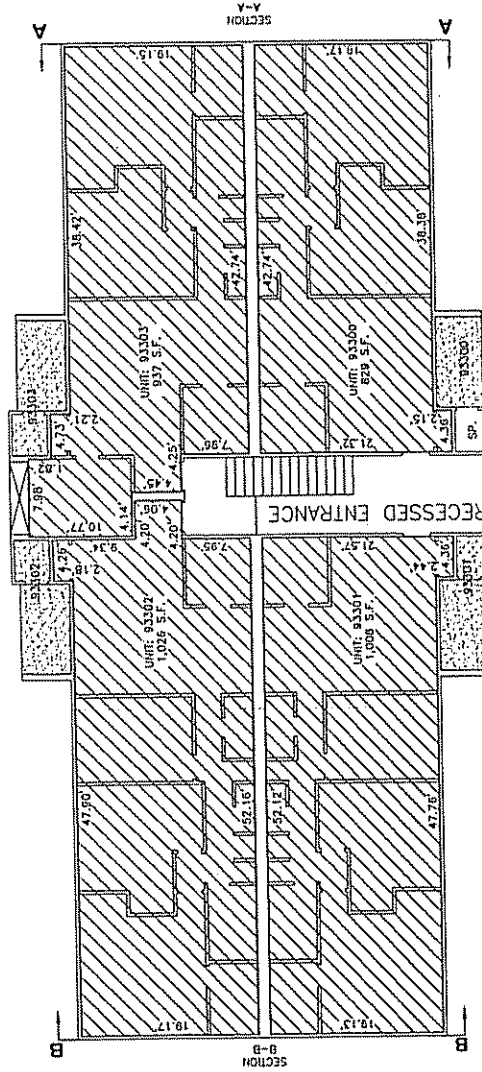
SECOND FLOOR

PLANS OF CARRIAGE POINTE AT AQUIA
 ON PARCELS J, B, AND 3K
 VILLAGES OF AQUIA SECTION ONE
 REMAINDER OF PARCEL 3N-1
 VILLAGES OF AQUIA SECTION TWO
 PLAT BOOK 32 PAGES 162-164
 PARCELS 3-N 249
 VILLAGES OF AQUIA SECTION THREE
 PLAT BOOK 31 PAGES 18 29, 2005
 REV. DECEMBER 21, 2005



BURGESS & NIPILE
 SURVEYED BY: SCOTT BOROWSKI, WILLIAM COLLINS, MIKE FESSLETT, ANTHONY ALLET, CHAD BOURGHEE, PRESTON JOHNSON
 No. 2485
 12/22/05

BURGESS & NIPILE
 ENGINEERS & ARCHITECTS
 1510 W. WASHINGTON AVENUE, SUITE 200
 ARLINGTON, VA 22202
 TEL: (703) 491-2525 FAX: (703) 491-2521



THIRD FLOOR

- LEGEND
- [Hatched Box] COMMON ELEMENT
 - [Diagonal Lines Box] UNIT
 - [Dotted Box] LIMITED COMMON ELEMENT, 15100 INDICATES UNIT TO WHICH LIMITED ELEMENT IS ASSIGNED
 - [15100 Box] 15100
 - [Stair Symbol] EXTERIOR DIMENSIONS (AT FIRST FLOOR)
 - [SP] SPRINKLER ROOM

PLANS OF
CARRIAGE POINTE AT AQUA
ON PARCELS JI, B, AND JK
VILLAGES OF AQUA SECTION ONE
VILLAGES OF AQUA SECTION TWO
VILLAGES OF AQUA SECTION THREE
VILLAGES OF AQUA SECTION FOUR
PLAT BOOK 32 PAGES 162-184
PLAT BOOK 30 PAGES 142-148
VILLAGES OF AQUA SECTION THREE
PLAT BOOK 31 PAGES 218-219
PLAT BOOK 31 PAGES 218-219
REV. DECEMBER 21, 2005

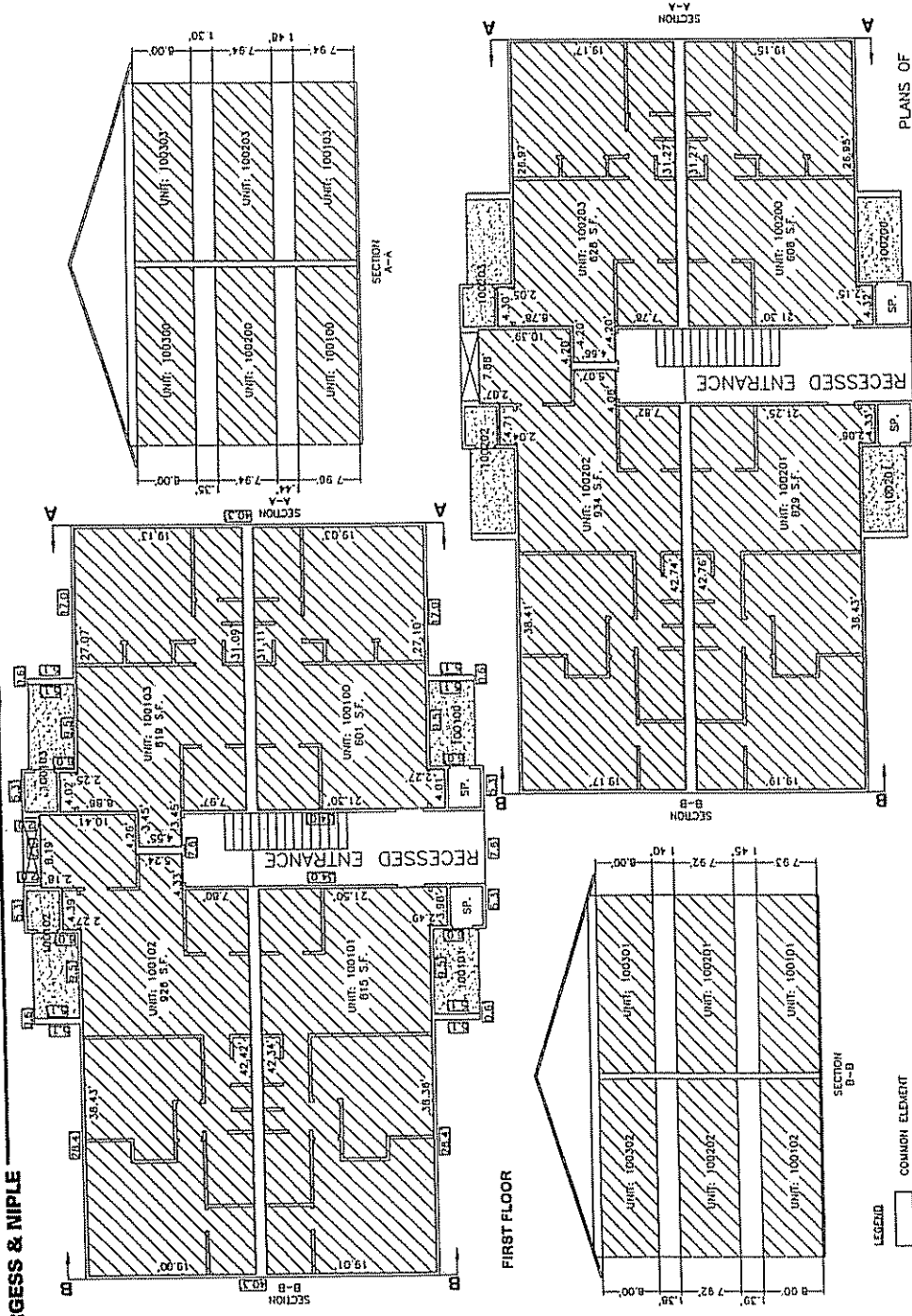


BURGESS & NIPIE
REGISTERED PROFESSIONAL ARCHITECTS
191 BURGESS AVENUE, SUITE 200
MINNEAPOLIS, MN 55414-1533
PH: (763) 947-2464 FAX: (763) 947-2424



SUPPLIED BY: SCOTT BOROWSKI, WILLIAM COLLINS, MIKE FESSLER, HATHAN ALLET, CHAO BURGELLE, PRESTON JOUSSON

BURGESS & NIPLE



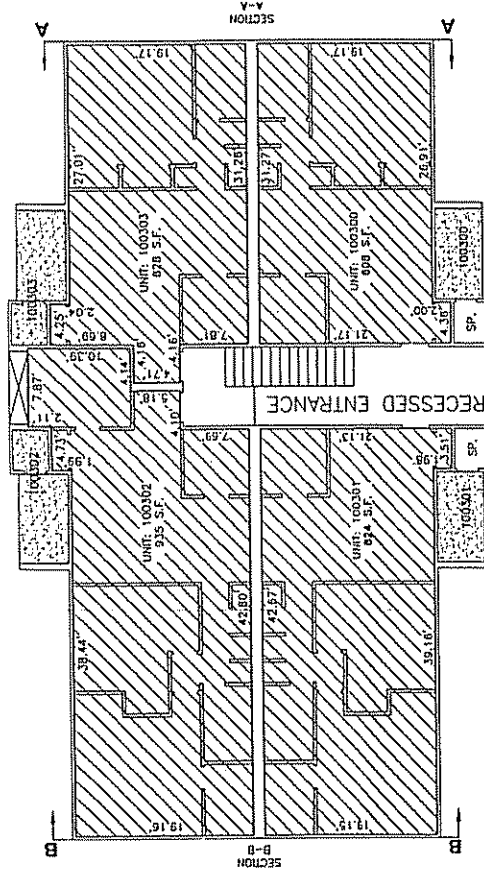
- LEGEND**
- COMMON ELEMENT
 - UNIT
 - LIMITED COMMON ELEMENT 15100 INDICATES UNIT TO WHICH LIMITED ELEMENT IS ASSIGNED
 - EXTERIOR DIMENSIONS (AT FIRST FLOOR)
 - SPRINKLER ROOM

PLANS OF CARRIAGE POINTE AT AQUA
 ON PARCEL 30A, SECTION ONE
 OF PLAT BOOK 30, SEPTEMBER 29, 2005
 VILLAGES OF AQUA SECTION ONE
 REMAINDER OF PARCEL 30A-1
 VILLAGES OF AQUA SECTION TWO
 PLAT BOOK 30, PAGES 192-194
 PLAT BOOK 30 PAGE 248
 PARCEL 30A-1
 VILLAGES OF AQUA SECTION THREE
 PLAT BOOK 30, SEPTEMBER 29, 2005
 PLAT BOOK 30, PAGES 192-194
 REV. DECEMBER 21, 2005



BURGESS & NIPLE
 ARCHITECTS
 1212 JUDSON DRIVE, SUITE 200
 BURRIDGE, PRESTON JUDSON
 PH. (919) 465-3344 FAX (919) 496-1821

SURVEYED BY: SCOTT BOROWSKI, WILLIAM
 HARRIS, JAMES FESSLER, NATHAN ALLEY, CHAD
 BURRIDGE, PRESTON JUDSON
 SHEET 27 OF 30



THIRD FLOOR

- LEGEND
- [Hatched Box] COMMON ELEMENT
 - [Hatched Box] UNIT
 - [Hatched Box] LIMITED COMMON ELEMENT, 15100 INDICATES UNIT TO WHICH LIMITED ELEMENT IS ASSIGNED
 - [Hatched Box] 15100: EXTERIOR DIMENSIONS (AT FIRST FLOOR)
 - [SP.] SPRINKLER ROOM

PLANS OF
CARRIAGE POINTE AT AQUIA
ON PARCELS 3N, 4E, 5E AND 6E
VILLAGES OF AQUA SECTION ONE
REMAINDER OF PARCEL 3N-1
VILLAGES OF AQUA SECTION TWO
VILLAGES OF AQUA SECTION THREE
PLAT BOOK 30 PAGE 248
PARCEL 3-N
VILLAGES OF AQUA SECTION THREE
PLAT BOOK 31 SEPTEMBER 29, 2005
REV. DECEMBER 21, 2005

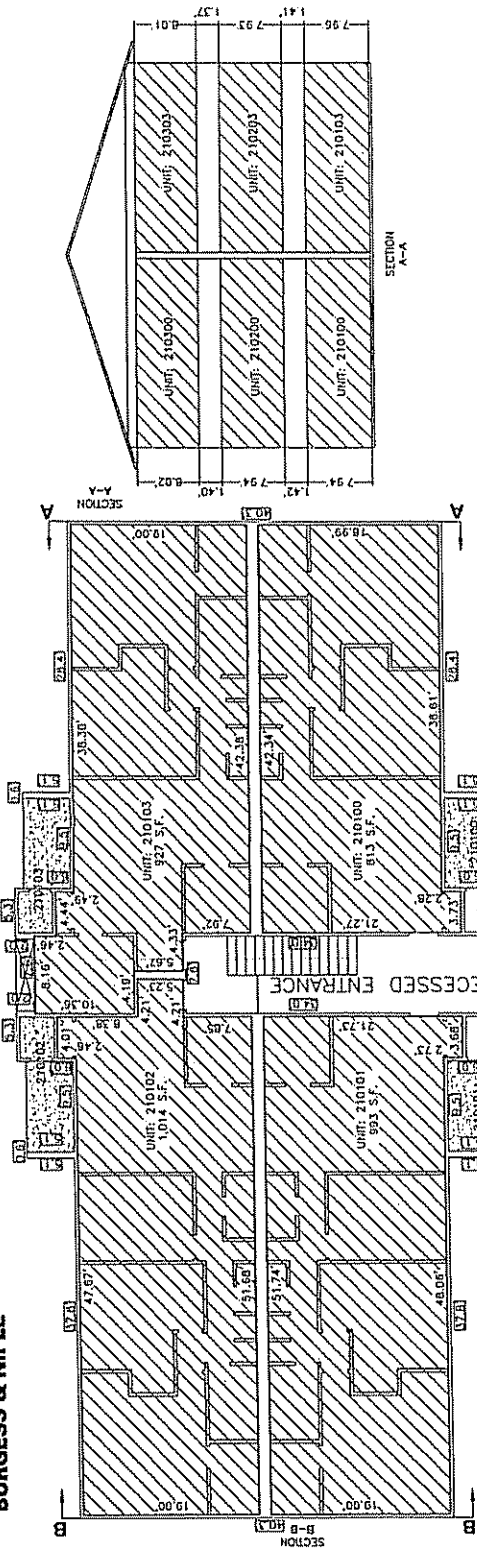
SCALE: 1"=8'



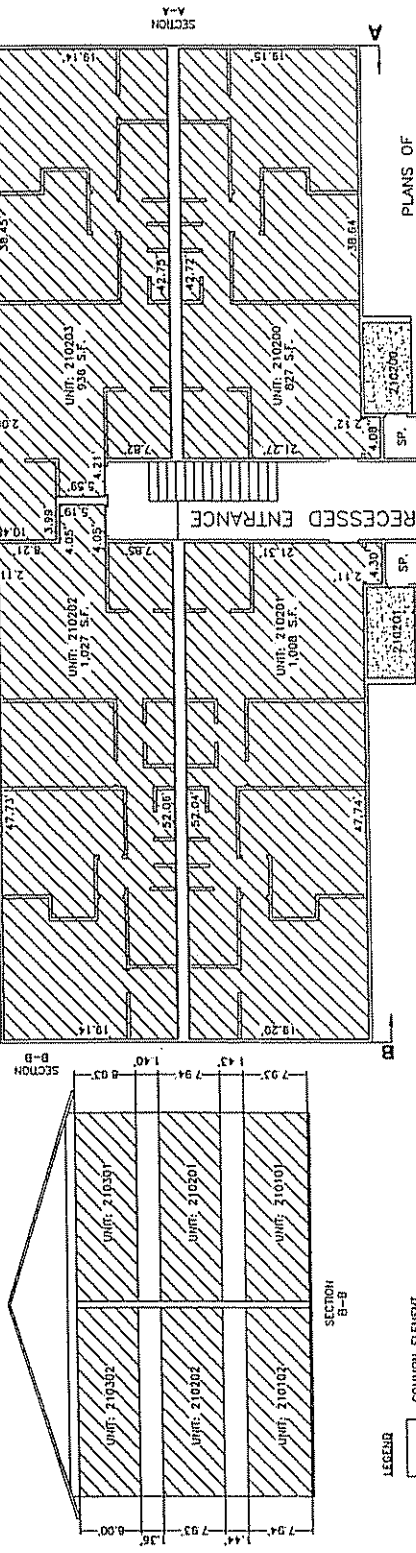
DESIGNED BY: SCOTT BORDOWSKI, WILLIAM COLLINS, MIKE FESSLER, NATHAN ALLEY, CHAO BURDETTE, PRESTON JUDSON

BURGESS & NIPLÉ
ARCHITECTS
1400 EAST MAIN STREET, SUITE 100, WOODLAND HILLS, CA 91367
TEL: (818) 495-5248 FAX: (818) 495-5251

BURGESS & NIPLÉ



FIRST FLOOR



SECOND FLOOR

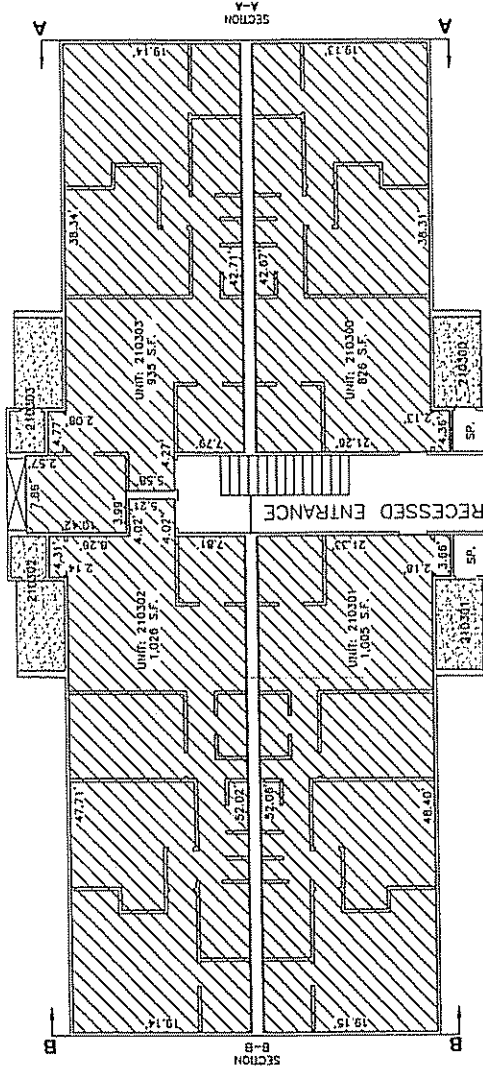
- LEGEND**
- COMMON ELEMENT
 - UNIT
 - LIMITED COMMON ELEMENT, 15100 INDICATES UNIT TO WHICH LIMITED ELEMENT IS ASSIGNED
 - EXTERIOR DIMENSIONS (AT FIRST FLOOR)
 - SP. SPRINKLER ROOM

PLANS OF
CARRIAGE POINTE AT AQUA
 COMMON ELEMENT SECTION ONE
 VILLAGES OF AQUA SECTION ONE
 REMAINDER OF PARCEL 30-110
 VILLAGES OF AQUA SECTION TWO
 PLAT BOOK 32 PAGES 182-184
 PARCEL 30-110
 VILLAGES OF AQUA SECTION THREE
 PLAT BOOK 31 PAGES 718
 REV. DECEMBER 21, 2005



BURGESS & NIPLÉ
 ARCHITECTS & PLANNERS
 1815 MARKET STREET, SUITE 100, WASHINGTON, VA 22102-4333
 TEL: (703) 662-5500 FAX: (703) 662-5601

SURVEYED BY: SCOTT BOROWSKI, WILLIAM COLLINS, MIKE FESSLER, HATHAN ALLEY, CHAO BURDETTE, PRESTON JUDSON



THIRD FLOOR

LEGEND

- COMMON ELEMENT
- UNIT
- LIMITED COMMON ELEMENT, 15100 INDICATES UNIT TO WHICH LIMITED ELEMENT IS ASSIGNED
- EXTERIOR DIMENSIONS (AT FIRST FLOOR)
- SP. SPRINKLER ROOM

PLANS OF CARRIAGE POINTE AT AQUINA ON PARCELS 31, B, AND 3K VILLAGES OF AQUINA SECTION ONE REVISIONS OF PARCEL 31 IN TWO PLAT BOOKS 32 PAGES 182-184 PLAT BOOK 30 PAGE 248 PARCEL 31-11 VILLAGES OF AQUINA SECTION THREE PLAT BOOK 31 PAGES 218-219 REV. DECEMBER 21, 2005



BURGESS & NIPLÉ
 CIVIL ENGINEER
 COMMONWEALTH OF VIRGINIA
 NO. 245
 12/22/05

SURVEYED BY: SCOTT BOROWSKI, WILLIAM COLLINS, MIKE FESSLER, HATHAN ALLEY, CHAD BURDETTE, PRESTON JOUSON

BURGESS & NIPLÉ

NOTES:

- THE PROPERTIES SHOWN HEREON ARE OWNED BY VILLAGES OF AQUIA, LLC, A VIRGINIA LIMITED LIABILITY COMPANY AND ARE LISTED AT THE CLERK'S OFFICE FOR THE COUNTY OF STAFFORD AS FOLLOWS:
 PARCEL I: TAX MAP 30 PARCEL 3J, INSTRUMENT # 050031460.
 PARCEL II: TAX MAP 30 PARCEL 3X-1-B, INSTRUMENT # 050031460.
 PARCEL III: TAX MAP 30 PARCEL 30-3K, INSTRUMENT # 050031460.
 PARCEL IV: TAX MAP 30 PARCEL 30X-2-3N, INSTRUMENT # 050031460.
 PARCEL V: TAX MAP 30 PARCEL 30X-3-3M, INSTRUMENT # 050031460.
- TITLE REPORT PROVIDED BY LAYNERS TITLE INSURANCE CORPORATION, COMMITMENT NUMBER 10652798 DATED MAY 5, 2005.
- THE PROPERTIES SHOWN HEREON FALL IN FLOOD ZONE C (AREAS OF MINIMAL FLOODING) PER STAFFORD COUNTY, VIRGINIA FLOOD INSURANCE RATE MAP COMMUNITY PANEL NUMBER 510154 0135D DATED REVISED MARCH 3, 1992.
- THE PROPERTIES SHOWN HEREON ARE ZONED R-3 (MULTI FAMILY) AND ARE SUBJECT TO THE FOLLOWING DIMENSIONAL RESTRICTIONS PER THE COUNTY OF STAFFORD, VIRGINIA, A-35 FEET FROM ANY PUBLIC RIGHT OF WAY AND 30 FEET FROM ANY OTHER STRUCTURE.
 B: FRONT YARD-15 FEET
 C: SIDE YARD-15 FEET
 D: REAR YARD-20 FEET
 E: MAXIMUM BUILDING HEIGHT-65 FEET
 F: MINIMUM LOT WIDTH-N/A
- NO UNDERGROUND UTILITIES HAVE BEEN LOCATED OR SHOWN ON THIS SURVEY. UTILITY FEATURES AS SHOWN ARE BASED ON SITE OBSERVATIONS OF ABOVE GROUND FEATURES.
- BUILDING HEIGHTS WERE MEASURED FROM THE FRONT CENTER OF THE BUILDINGS.

"I, HEREBY CERTIFY THAT THIS PLAT SHOWS ACCURATELY THE INFORMATION DEPICTED HEREON AND THAT IT COMPLIES WITH THE PROVISIONS OF SECTION 55-79.58A, AND 55-79.59 OF THE CODE OF VIRGINIA 1950, AS AMENDED, AND THAT THERE ARE NO VISIBLE EASEMENTS OR ENCROACHMENTS OTHER THAN AS SHOWN OR NOTED HEREON. I FURTHER CERTIFY THAT ALL UNITS OR PORTIONS THEREOF COMPLETED."

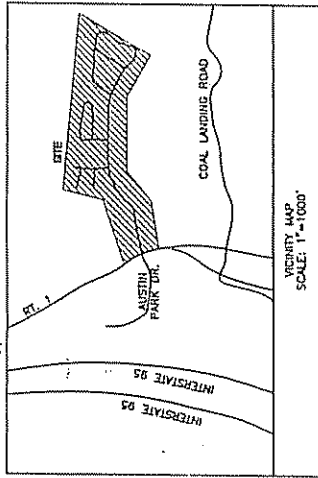
BURGESS AND NIPLÉ

DATE: 12/22/05

Scott P. Borowski

BY: SCOTT P. BOROWSKI, VIRGINIA REGISTRATION NO. 2665

VIRGINIA REGISTRATION NO. 2665



ACREAGE:

- PARCEL B 2.786 AC.
- PARCEL 3K 0.472 AC.
- PARCEL 3-M 3.739 AC.
- PARCEL 3J 1.213 AC.
- PARCEL 3N-1 6.866 AC.
- SUBMITTED LANDS 15.096 AC.
- ADDITIONAL LANDS 0.507 AC.

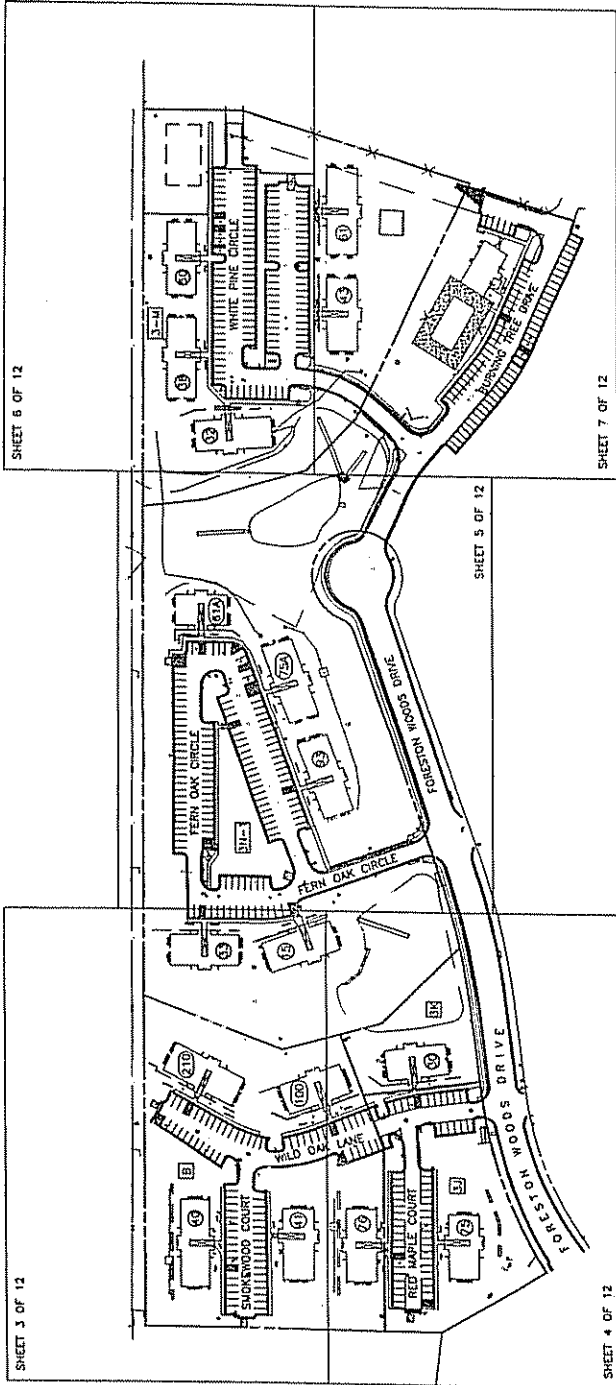
LEGEND

- MAIL BOX
- FLAG POLE
- RIP-RAP STONE
- STORM MH
- SIGN (SYMBOL)
- FIRE HYDRANT
- UTILITY POLE
- GUY POLE
- ELECTRIC METER
- ELECTRIC TRANSFORMER
- AIR CONDITIONER
- HANDICAP PARKING SPACE
- NUMBER OF REGULAR PARKING SPACES
- SANITARY SEWER MANHOLE
- WATER VALVE
- FENCE
- TELEPHONE PEDISTAL
- SANITARY CLEAN-OUT
- WATER METERS
- VEPCO
- CDI
- B.R.W.
- C.R.W.
- PB.
- DB
- PAGE
- PF
- STEEL PIN FOUND
- PARKER-KAYLON NAIL SET
- POINT OF BEGINNING
- PARCEL
- CONCRETE PIPE
- WATER METERS
- WATER VALVE
- CONCRETE
- APPROXIMATE
- EASEMENT
- ESMT
- PVC
- LAND RECORD
- LR
- YD
- TYP.
- DHF
- AC
- VIRGINIA POWER AND ELECTRIC
- CURB DROP INLET
- BLOCK RETAINING WALL
- CONCRETE RETAINING WALL
- PLAT BOOK
- DEED BOOK
- PAGE
- STEEL PIN FOUND
- PARKER-KAYLON NAIL SET
- POINT OF BEGINNING
- PARCEL
- CONCRETE PIPE
- WATER METERS
- WATER VALVE
- CONCRETE
- APPROXIMATE
- EASEMENT
- ESMT
- PVC
- LAND RECORD
- LR
- YD
- TYP.
- DHF
- AC
- CARRIAGE POINTE AT AQUIA
- ON PARCELS 3K, 3M, 3N, 3J
- VILLAGES OF AQUIA SECTION ONE
- VILLAGES OF AQUIA SECTION ONE
- REARER OF AQUIA SECTION ONE
- VILLAGES OF AQUIA SECTION TWO
- PLAT BOOK 32 PAGES 102-164
- PLAT BOOK 30 PAGE 248
- PARCEL 3-M
- VILLAGES OF AQUIA SECTION THREE
- PLAY BOOK 31 PAGES 211
- REV. DECEMBER 21, 2005



BURGESS & NIPLÉ
 SURVEYED BY: SCOTT BOROWSKI, WILLIAM COLLINS, MIKE FESSLER, TATHANI ALLET, CHNO BOURLETTE, PRESTON JOHNSON
 14 BURGESS BLVD., SUITE 100, FARMERS MARKET, 14 3RD ST., ARLINGTON, VA 22202-5048 TEL (703) 493-7021

BURGESS & NIPLÉ



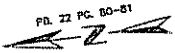
SHEET 3 OF 12

SHEET 4 OF 12

SHEET 5 OF 12

SHEET 6 OF 12

SHEET 7 OF 12



PL. 22 PC. 80-81

PARCEL B
2780 AC.
PB. 328 PGS. 185-186

PARCEL 3K
0.77 AC.
PB. 33 PGS. 120-128 PB.
PB. 32 PGS. 185-186

PARCEL 3-M
373 AC.
PB. 31 PG. 218

REMAINDER OF
PARCEL 3K-1
PARCEL 3K-2
PAR. 30 PG. 248

PARCEL 3J
213 AC.
PB. 36 PGS. 165-168
PB. 1072 PG. 180

- 75 RED MAPLE COURT
2 STORY FRAME
HEIGHT=25.50
- 76 RED MAPLE COURT
2 STORY FRAME
HEIGHT=25.50
- 41 SMOKEWOOD COURT
2 STORY FRAME
HEIGHT=25.50
- 40 SMOKEWOOD COURT
2 STORY FRAME
HEIGHT=25.50
- 35 WILD OAK LANE
3 STORY FRAME
HEIGHT=30.00
- 108 WILD OAK LANE
3 STORY FRAME
HEIGHT=30.00
- 219 WILD OAK LANE
3 STORY FRAME
HEIGHT=30.00
- 15 WILD OAK LANE
3 STORY FRAME
HEIGHT=30.00
- 33 FERN OAK CIRCLE
3 STORY FRAME
HEIGHT=30.00
- 93 FERN OAK CIRCLE
3 STORY FRAME
HEIGHT=30.00
- 75 FERN OAK CIRCLE
3 STORY FRAME
HEIGHT=30.00
- 61 FERN OAK CIRCLE
3 STORY FRAME
HEIGHT=30.00
- 32 WHITE PINE CIRCLE
3 STORY FRAME
HEIGHT=30.00
- 30 WHITE PINE CIRCLE
3 STORY FRAME
HEIGHT=30.00
- 43 WHITE PINE CIRCLE
3 STORY FRAME
HEIGHT=30.00
- 30 WHITE PINE CIRCLE
2 STORY FRAME
HEIGHT=25.50
- 61 WHITE PINE CIRCLE
2 STORY FRAME
HEIGHT=25.50

**PLANS OF
CARRIAGE POINTE AT AQUA**
A CONDOMINIUM BEING
ON PARCELS 3J, 6, AND 3K
OF THE VILLAGES OF AQUA
REMAINDER OF PARCEL 3K-1
VILLAGES OF AQUA SECTION TWO
PLAT BOOK 32 PGS. 162-164
PLAT 27 PG. 248
VILLAGES OF AQUA SECTION THREE
PLAT BOOK 31 PGS. 218
REV. DECEMBER 21, 2005



SCALE: 1"=30'

BURGESS & NIPLÉ

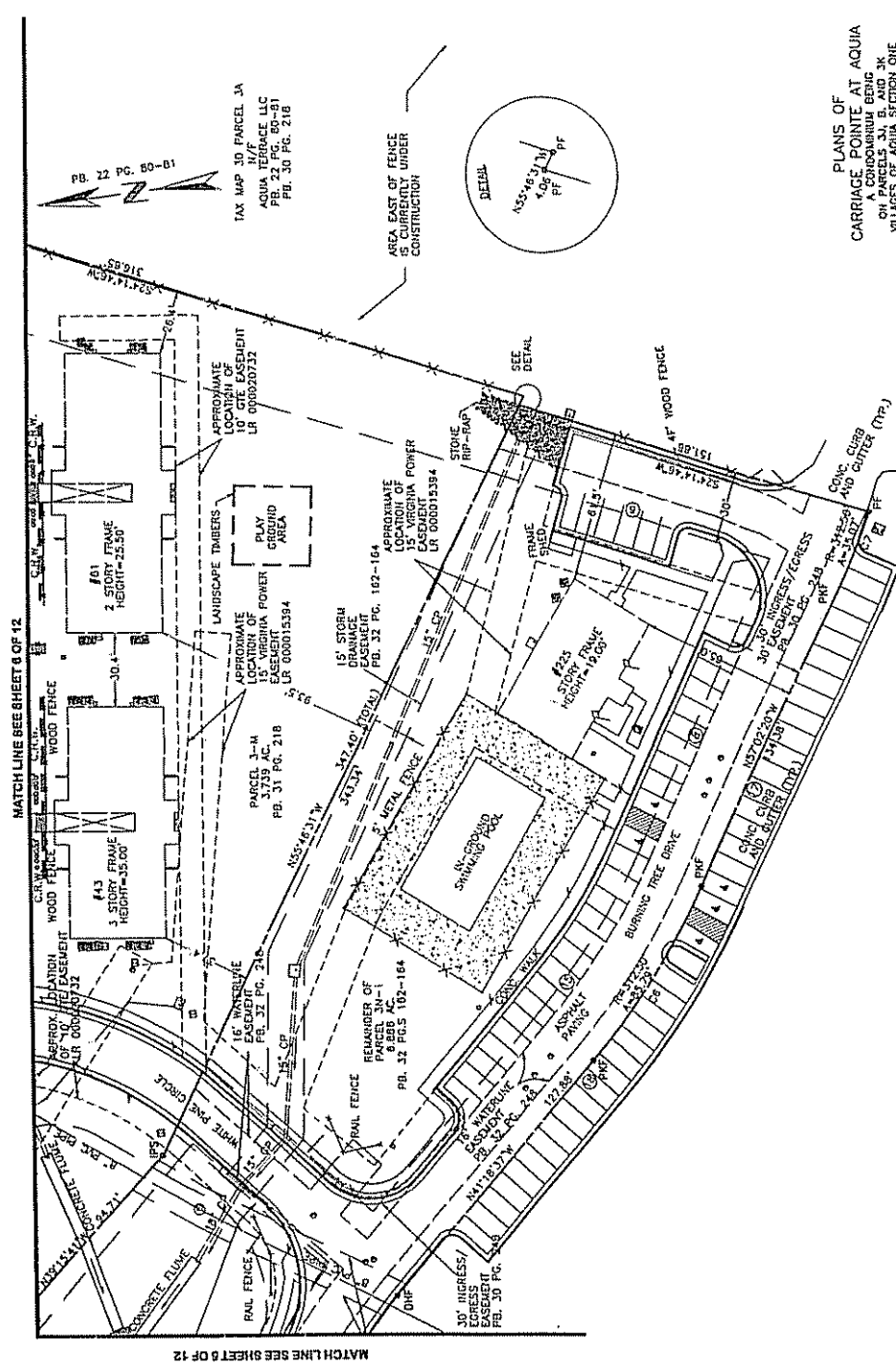
SURVEYED BY: SCOTT BOROWSKI, WILLIAM
COLLINS, MIKE FESSLER, HATHAW ALLEY, CHAO
BURDETTE, PRESTON NUSSON



SCALE 1"=100'

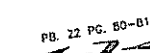
BURGESS & NIPLÉ

PL0178: 13/22/2005 5:00:07 PM



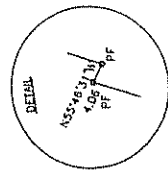
MATCH LINE SEE SHEET 8 OF 12

MATCH LINE SEE SHEET 9 OF 12



TAX MAP 3D PARCEL JA
 AQUA TRAIL LLC
 PB. 22 PG. 80-B1
 PB. 30 PG. 218

AREA EAST OF FENCE
 IS CURRENTLY UNDER
 CONSTRUCTION



**PLANS OF
 CARRIAGE POINTE AT AQUIA**
 A CONDOMINIUM BEING
 ON PARCELS 31, B, AND 3K
 OF SECTION ONE, TOWN OF
 VILLAGES OF AQUA SECTION ONE
 REMAINDER OF PARCEL 31-1
 VILLAGES OF AQUA SECTION TWO
 PLAT BOOK 22 PAGE 80-B1
 PLAT BOOK 30 PAGE 218
 PARCEL 31-M
 VILLAGES OF AQUA SECTION THREE
 PLAT BOOK 31 PAGE 218
 REV. DECEMBER 21, 2005

SCALE: 1"=30'



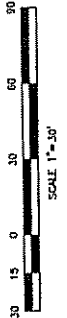
REGISTERED PROFESSIONAL LANDSCAPE ARCHITECT
 141 BUCKINGHAM DRIVE, SUITE 100, WESLEY HILLS, VA 22154-1533
 PH: (703) 492-2548 FAX: (703) 492-4621

SURVEYED BY: SCOTT BURROWSKI, WILLIAM COLLINS, MIKE FESSLETT, NATHAN ALLEY, CHAD BURDETTE, PRESTON JUDSON

SHEET 7 OF 13

JOB NO. 41417

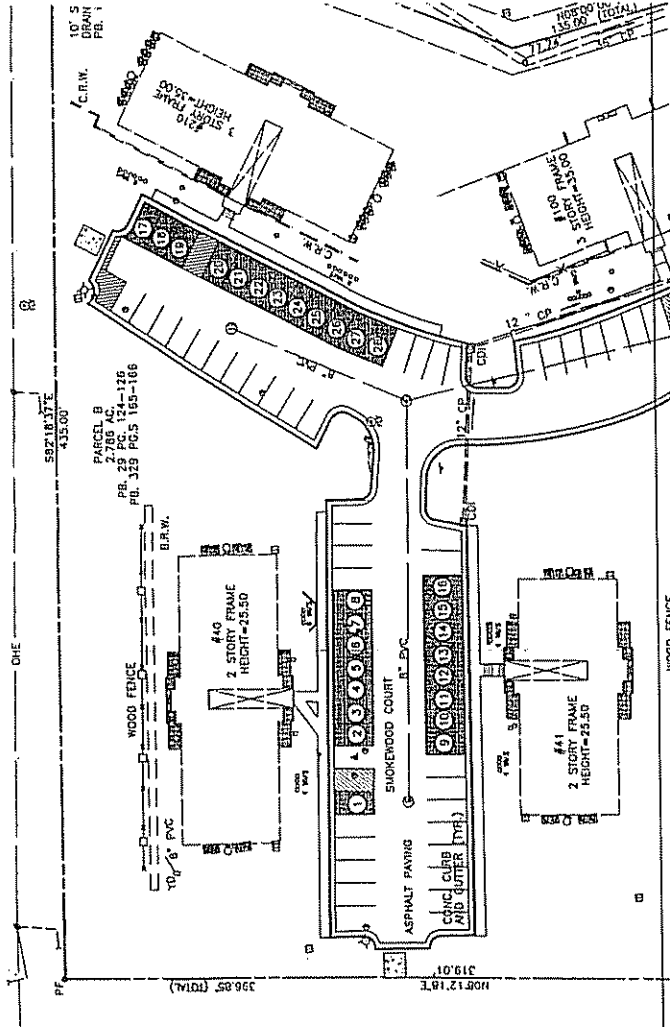
NOTE: ALL LANDS ON THIS SHEET ARE SUBMITTED LANDS



BURGESS & NIPLÉ

5:\J085\11417\add\CD\00\PLAN.dwg 12/22/2005 4:52:28 PM Harfial, Brandon
 PLOTTED: 12/22/2005 5:00:03 PM

IN REPLY TO/FURNISH A
 MICHAEL D. LURELEY ET. AL.
 BS. 832 PG. 85



ICED. 2
 Y. ET. AL.
 85

NUMBER	LIMITED COMMON ELEMENT ADDRESS	UNIT
(1)	40 SMOKEWOOD COURT	40100
(2)	40 SMOKEWOOD COURT	40101
(3)	40 SMOKEWOOD COURT	40102
(4)	40 SMOKEWOOD COURT	40103
(5)	40 SMOKEWOOD COURT	40200
(6)	40 SMOKEWOOD COURT	40201
(7)	40 SMOKEWOOD COURT	40202
(8)	40 SMOKEWOOD COURT	40203
(9)	41 SMOKEWOOD COURT	41100
(10)	41 SMOKEWOOD COURT	41101
(11)	41 SMOKEWOOD COURT	41102
(12)	41 SMOKEWOOD COURT	41103
(13)	41 SMOKEWOOD COURT	41200
(14)	41 SMOKEWOOD COURT	41201
(15)	41 SMOKEWOOD COURT	41202
(16)	41 SMOKEWOOD COURT	41203
(17)	210 WILD OAK LAKE	210100
(18)	210 WILD OAK LAKE	210101
(19)	210 WILD OAK LAKE	210102

NUMBER	LIMITED COMMON ELEMENT ADDRESS	UNIT
(20)	210 WILD OAK LAKE	210103
(21)	210 WILD OAK LAKE	210200
(22)	210 WILD OAK LAKE	210201
(23)	210 WILD OAK LAKE	210202
(24)	210 WILD OAK LAKE	210203
(25)	210 WILD OAK LAKE	210300
(26)	210 WILD OAK LAKE	210301
(27)	210 WILD OAK LAKE	210302
(28)	210 WILD OAK LAKE	210303

LEGEND
 LCE = LIMITED COMMON ELEMENT FOR UNIT ASSIGNMENT
 LCE SEE LCE TABLE FOR UNIT ASSIGNMENT
 LCE SEE CONDO PLANS



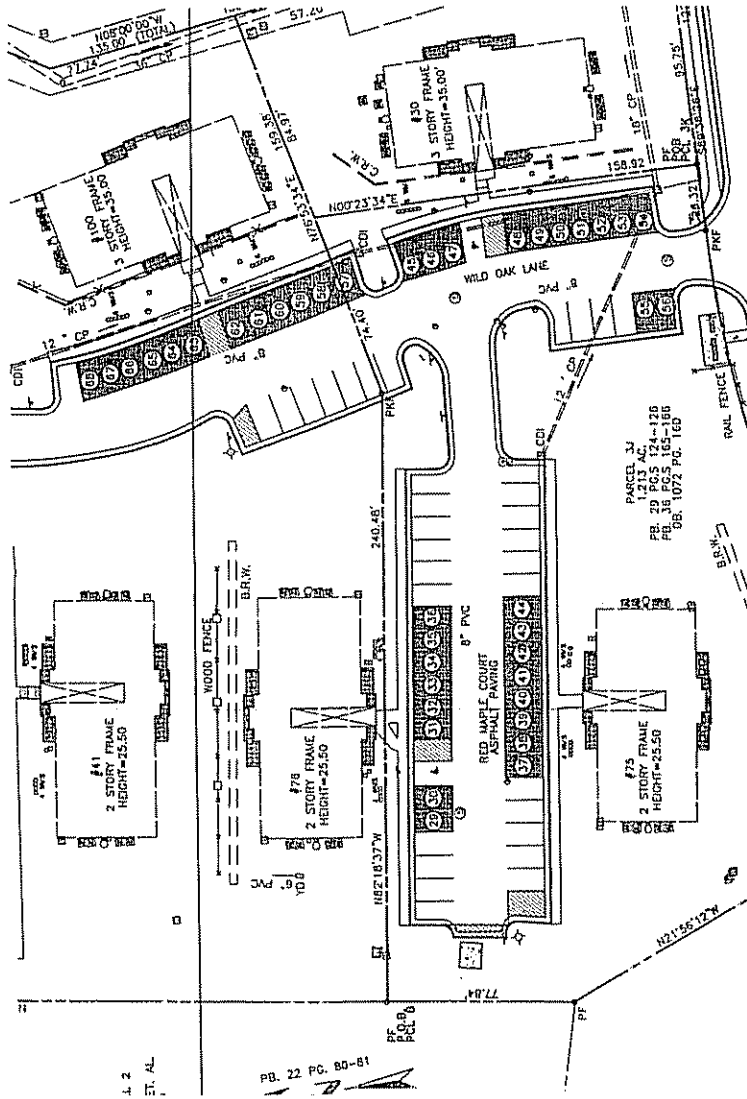
SUBMITTED BY: SCOTT BOROWSKI, WILLIAM COLLINS, MARK FESSLER, HATHAW ALLEY, CHAO BURBETTE, PRESTON JONSON

PLANS OF CARRIAGE POINTE AT AQUA
 A CONDOMINIUM BEING ON PARCELS 3A, B, AND 3K VILLAGES OF AQUA SECTION ONE REVENUE OF PARCEL 3A-1 VILLAGES OF AQUA SECTION TWO PLAT BOOK 32 PAGES 107-104 PARCELS 3A, B, AND 3K VILLAGES OF AQUA SECTION THREE PLAT BOOK 31 PAGES 219, 2005 REV. DECEMBER 21, 2005
 SCALE: 1"=30'

BURGESS & NIPLÉ

REGISTERED PROFESSIONAL ARCHITECTS
 14 BURGESS PARK DRIVE, SUITE 102, WOODHALL GOLF & COUNTRY CLUB, VIRGINIA BEACH, VA 23462-4333
 PH: (757) 496-3544 FAX: (757) 496-9251

BURGESS & NIPLÉ



4. 2
ST. AL
PB. 22 PG. 80-81

LEGEND
 [Symbol] LCE - LIMITED COMMON ELEMENT
 [Symbol] LCE SEE LCE TABLE FOR UNIT ASSIGNMENT
 [Symbol] LCE SEE CONDO PLANS

SURVEYED BY: SCOTT BOROWSKI, WILLIAM COLLINS, MIKE FESSLER, HATHAN ALLEY, CHAD BURGETTE, PRESTON JOHNSON



PLANS OF CARRIAGE POINTE AT AQUIA
 ON A CONDOMINIUM BEING IN THE VILLAGES OF AQUIA SECTION ONE VILLAGES OF AQUIA SECTION ONE REMAINDER OF PARCEL 3N-1 VILLAGES OF AQUIA SECTION TWO PARCELS 3N-2 & 3N-3 PARCEL 3N-4 PARCEL 3N-4
 VILLAGES OF AQUIA SECTION THREE PLAT BOOK 31
 REV. DECEMBER 21, 2005



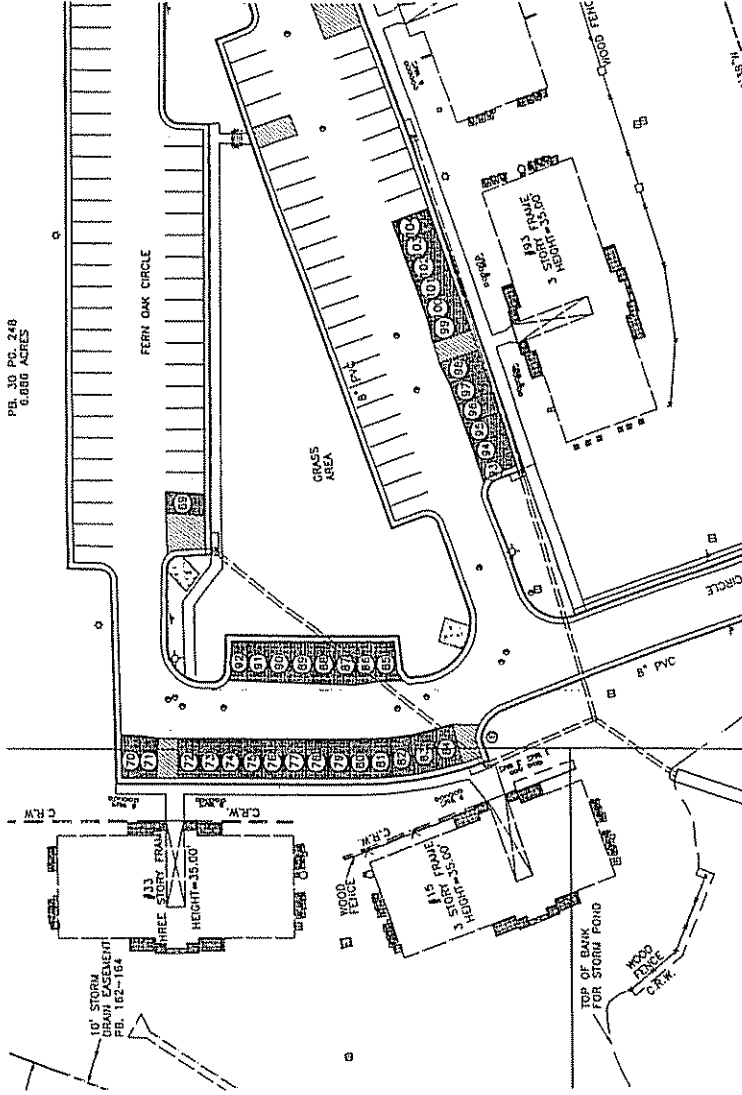
BURGESS & NIPLÉ
 ARCHITECTS & PLANNERS & LANDSCAPE ARCHITECTS
 114 HERRING HILL DRIVE, SUITE 100, WESTLAKE, VA 22641-4553
 TEL: (703) 440-3348 FAX: (703) 440-7624

UNIT	ADDRESS	UNIT
30200	30 WILD OAK LAKE	30200
30201	30 WILD OAK LAKE	30201
30202	30 WILD OAK LAKE	30202
30203	30 WILD OAK LAKE	30203
30300	30 WILD OAK LAKE	30300
30301	30 WILD OAK LAKE	30301
30302	30 WILD OAK LAKE	30302
30303	30 WILD OAK LAKE	30303
100100	100 WILD OAK LAKE	100100
100101	100 WILD OAK LAKE	100101
100102	100 WILD OAK LAKE	100102
100103	100 WILD OAK LAKE	100103
100200	100 WILD OAK LAKE	100200
100201	100 WILD OAK LAKE	100201
100202	100 WILD OAK LAKE	100202
100203	100 WILD OAK LAKE	100203
100300	100 WILD OAK LAKE	100300
100301	100 WILD OAK LAKE	100301
100302	100 WILD OAK LAKE	100302
100303	100 WILD OAK LAKE	100303

UNIT	ADDRESS	UNIT
76100	76 RED MAPLE COURT	76100
76101	76 RED MAPLE COURT	76101
76102	76 RED MAPLE COURT	76102
76103	76 RED MAPLE COURT	76103
76200	76 RED MAPLE COURT	76200
76201	76 RED MAPLE COURT	76201
76202	76 RED MAPLE COURT	76202
76203	76 RED MAPLE COURT	76203
75100	75 RED MAPLE COURT	75100
75101	75 RED MAPLE COURT	75101
75102	75 RED MAPLE COURT	75102
75103	75 RED MAPLE COURT	75103
75200	75 RED MAPLE COURT	75200
75201	75 RED MAPLE COURT	75201
75202	75 RED MAPLE COURT	75202
75203	75 RED MAPLE COURT	75203
30100	30 WILD OAK LAKE	30100
30101	30 WILD OAK LAKE	30101
30102	30 WILD OAK LAKE	30102
30103	30 WILD OAK LAKE	30103

BURGESS & NIPLÉ

PL 30 PG. 248
6.050 ACRES



- LEGEND**
- LCE - LIMITED COMMON ELEMENT
 - UNIT - CONDO UNIT
 - COMMON ELEMENT
 - LCE FOR UNIT ASSIGNMENT
 - LCE SEE CONDO PLAN

SURVEYED BY: SCOTT BROWNSKI,
WILLIAM COLLINS, MIKE FESSLER,
NATHAN ALLEY, CHAD BURDETTE,
PRESTON JUDDSON



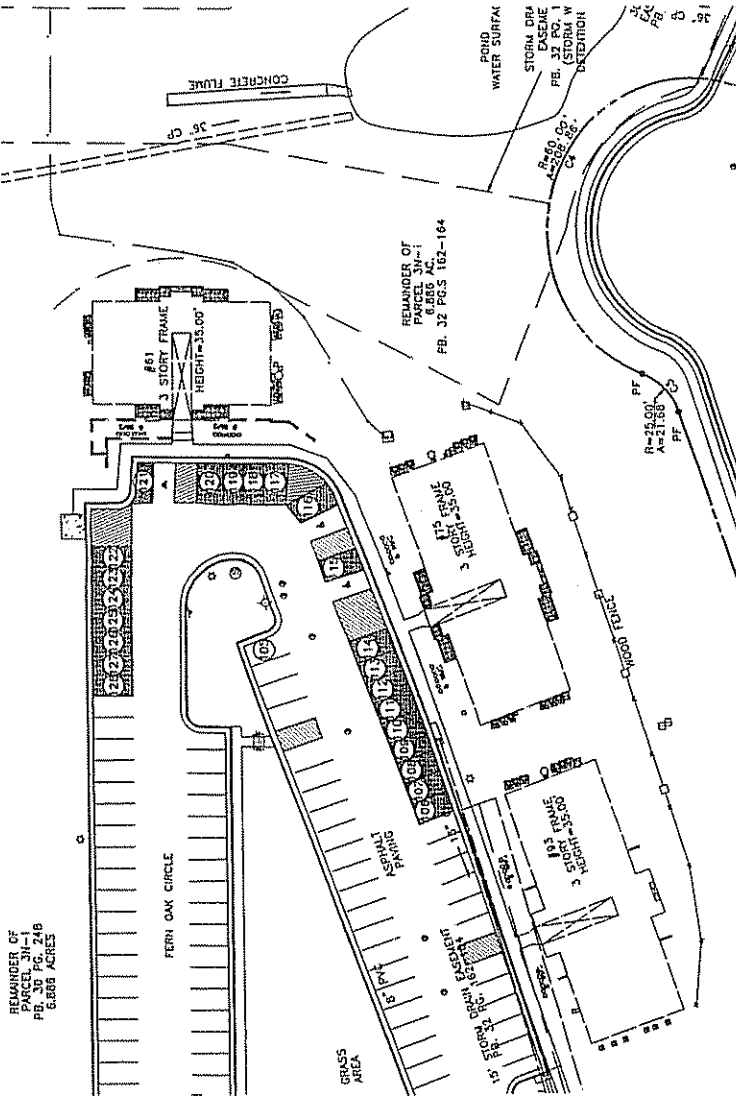
PLANS OF CARRIAGE POINTE AT AQUJA
A CONDOMINIUM BEING,
ON PARCELS 33, 61, AND 30,
VILLAGES OF AQUJA SECTION ONE
REMAINDER OF PARCEL 31-1
VILLAGES OF AQUJA SECTION TWO
PLAY BOOK 22 TO PAGE 164
PLAY BOOK 30 PAGE 248
PARCEL 31-N
VILLAGES OF AQUJA SECTION THREE
PLAY BOOK 31 TO PAGE 168
REV. DECEMBER 21, 2005

SCALE: 1"=30'

BURGESS & NIPLÉ
REGISTERED PROFESSIONAL ENGINEERS
14 BURGESS PARK DRIVE, SUITE 100, WRESTON, VA 22091-5333
PH: (703) 960-2588 FAX: (703) 960-0111

UNITED COMMON ELEMENT			UNIT		
NUMBER	ADDRESS	UNIT	NUMBER	ADDRESS	UNIT
(67)	15 FERN OAK CIRCLE	15202	(67)	15 FERN OAK CIRCLE	15202
(68)	15 FERN OAK CIRCLE	15203	(68)	15 FERN OAK CIRCLE	15203
(69)	15 FERN OAK CIRCLE	15300	(69)	15 FERN OAK CIRCLE	15300
(70)	15 FERN OAK CIRCLE	15301	(70)	15 FERN OAK CIRCLE	15301
(71)	15 FERN OAK CIRCLE	15302	(71)	15 FERN OAK CIRCLE	15302
(72)	15 FERN OAK CIRCLE	15303	(72)	15 FERN OAK CIRCLE	15303
(73)	93 FERN OAK CIRCLE	93100	(73)	93 FERN OAK CIRCLE	93100
(74)	93 FERN OAK CIRCLE	93101	(74)	93 FERN OAK CIRCLE	93101
(75)	93 FERN OAK CIRCLE	93102	(75)	93 FERN OAK CIRCLE	93102
(76)	93 FERN OAK CIRCLE	93103	(76)	93 FERN OAK CIRCLE	93103
(77)	93 FERN OAK CIRCLE	93200	(77)	93 FERN OAK CIRCLE	93200
(78)	93 FERN OAK CIRCLE	93201	(78)	93 FERN OAK CIRCLE	93201
(79)	93 FERN OAK CIRCLE	93202	(79)	93 FERN OAK CIRCLE	93202
(80)	93 FERN OAK CIRCLE	93300	(80)	93 FERN OAK CIRCLE	93300
(81)	93 FERN OAK CIRCLE	15100	(81)	15 FERN OAK CIRCLE	15100
(82)	15 FERN OAK CIRCLE	15101	(82)	15 FERN OAK CIRCLE	15101
(83)	15 FERN OAK CIRCLE	15102	(83)	15 FERN OAK CIRCLE	15102
(84)	15 FERN OAK CIRCLE	15103	(84)	15 FERN OAK CIRCLE	15103
(85)	15 FERN OAK CIRCLE	15200	(85)	15 FERN OAK CIRCLE	15200
(86)	15 FERN OAK CIRCLE	15201	(86)	15 FERN OAK CIRCLE	15201

BURGESS & NIPLÉ



LEGEND
 LCE - LIMITED COMMON ELEMENT
 COMMON ELEMENT
 LCE FOR UNIT ASSIGNMENT
 LCE SEE CONDO PLANS

NUMBER	ADDRESS	UNIT
(05)	75 FERN OAK CIRCLE	75A100
(06)	75 FERN OAK CIRCLE	75A101
(07)	75 FERN OAK CIRCLE	75A102
(08)	75 FERN OAK CIRCLE	75A103
(09)	75 FERN OAK CIRCLE	75A200
(10)	75 FERN OAK CIRCLE	75A201
(11)	75 FERN OAK CIRCLE	75A202
(12)	75 FERN OAK CIRCLE	75A300
(13)	75 FERN OAK CIRCLE	75A301
(14)	75 FERN OAK CIRCLE	75A302
(15)	75 FERN OAK CIRCLE	75A303

NUMBER	ADDRESS	UNIT
(17)	61 FERN OAK CIRCLE	61A100
(18)	61 FERN OAK CIRCLE	61A101
(19)	61 FERN OAK CIRCLE	61A102
(20)	61 FERN OAK CIRCLE	61A103
(21)	61 FERN OAK CIRCLE	61A200
(22)	61 FERN OAK CIRCLE	61A201
(23)	61 FERN OAK CIRCLE	61A202
(24)	61 FERN OAK CIRCLE	61A300
(25)	61 FERN OAK CIRCLE	61A301
(26)	61 FERN OAK CIRCLE	61A302
(27)	61 FERN OAK CIRCLE	61A303

PLANS OF
 CARRIAGE POINTE AT AQUA
 A CONDOMINIUM BEING 3K
 ON PARCELS 31, B, AND 3K
 VILLAGES OF AQUA SECTION ONE
 VILLAGES OF AQUA SECTION TWO
 REMAINDER OF PARCEL 31-16
 VILLAGES OF AQUA SECTION TWO
 PLAT BOOK 32 PAGES 162-164
 PLAT BOOK 33 PAGE 240
 VILLAGES OF AQUA SECTION THREE
 PLAT BOOK 31 PAGE 218 AND 2005
 REV. DECEMBER 31, 2005



SCALE: 1"=30'

BURGESS & NIPLÉ

SURVEYED BY: SCOTT BORONSKI, WILLIAM COLLINS, MIKE FESSLER, BATHYNI ALLET, CHAO BURDETTE, PRESTON JOHNSON

DESIGNED & DRAWN BY: SCOTT BORONSKI, WILLIAM COLLINS, MIKE FESSLER, BATHYNI ALLET, CHAO BURDETTE, PRESTON JOHNSON
 TEL: (373) 985-5251 FAX: (373) 985-1574

BURGESS & NIPLÉ

LIMITED COMMON ELEMENT		
NUMBER	ADDRESS	UNIT
(29)	61 WHITE PINE CIRCLE	61100
(30)	61 WHITE PINE CIRCLE	61101
(31)	61 WHITE PINE CIRCLE	61102
(32)	61 WHITE PINE CIRCLE	61103
(33)	61 WHITE PINE CIRCLE	61200
(34)	61 WHITE PINE CIRCLE	61201
(35)	61 WHITE PINE CIRCLE	61202
(36)	61 WHITE PINE CIRCLE	61203
(37)	61 WHITE PINE CIRCLE	61300
(38)	61 WHITE PINE CIRCLE	61301
(39)	61 WHITE PINE CIRCLE	61302
(40)	61 WHITE PINE CIRCLE	61303
(41)	61 WHITE PINE CIRCLE	61304
(42)	61 WHITE PINE CIRCLE	61305
(43)	61 WHITE PINE CIRCLE	61306
(44)	61 WHITE PINE CIRCLE	61307
(45)	61 WHITE PINE CIRCLE	61308
(46)	61 WHITE PINE CIRCLE	61309
(47)	61 WHITE PINE CIRCLE	61310
(48)	61 WHITE PINE CIRCLE	61311
(49)	61 WHITE PINE CIRCLE	61312
(50)	61 WHITE PINE CIRCLE	61313
(51)	61 WHITE PINE CIRCLE	61314
(52)	61 WHITE PINE CIRCLE	61315
(53)	61 WHITE PINE CIRCLE	61316
(54)	61 WHITE PINE CIRCLE	61317
(55)	61 WHITE PINE CIRCLE	61318
(56)	61 WHITE PINE CIRCLE	61319
(57)	61 WHITE PINE CIRCLE	61320
(58)	61 WHITE PINE CIRCLE	61321
(59)	61 WHITE PINE CIRCLE	61322
(60)	61 WHITE PINE CIRCLE	61323
(61)	61 WHITE PINE CIRCLE	61324
(62)	61 WHITE PINE CIRCLE	61325
(63)	61 WHITE PINE CIRCLE	61326
(64)	61 WHITE PINE CIRCLE	61327
(65)	61 WHITE PINE CIRCLE	61328
(66)	61 WHITE PINE CIRCLE	61329
(67)	61 WHITE PINE CIRCLE	61330
(68)	61 WHITE PINE CIRCLE	61331
(69)	61 WHITE PINE CIRCLE	61332
(70)	61 WHITE PINE CIRCLE	61333
(71)	61 WHITE PINE CIRCLE	61334
(72)	61 WHITE PINE CIRCLE	61335
(73)	61 WHITE PINE CIRCLE	61336
(74)	61 WHITE PINE CIRCLE	61337
(75)	61 WHITE PINE CIRCLE	61338
(76)	61 WHITE PINE CIRCLE	61339
(77)	61 WHITE PINE CIRCLE	61340
(78)	61 WHITE PINE CIRCLE	61341
(79)	61 WHITE PINE CIRCLE	61342
(80)	61 WHITE PINE CIRCLE	61343
(81)	61 WHITE PINE CIRCLE	61344
(82)	61 WHITE PINE CIRCLE	61345
(83)	61 WHITE PINE CIRCLE	61346
(84)	61 WHITE PINE CIRCLE	61347
(85)	61 WHITE PINE CIRCLE	61348
(86)	61 WHITE PINE CIRCLE	61349
(87)	61 WHITE PINE CIRCLE	61350
(88)	61 WHITE PINE CIRCLE	61351
(89)	61 WHITE PINE CIRCLE	61352
(90)	61 WHITE PINE CIRCLE	61353
(91)	61 WHITE PINE CIRCLE	61354
(92)	61 WHITE PINE CIRCLE	61355
(93)	61 WHITE PINE CIRCLE	61356
(94)	61 WHITE PINE CIRCLE	61357
(95)	61 WHITE PINE CIRCLE	61358
(96)	61 WHITE PINE CIRCLE	61359
(97)	61 WHITE PINE CIRCLE	61360
(98)	61 WHITE PINE CIRCLE	61361
(99)	61 WHITE PINE CIRCLE	61362
(100)	61 WHITE PINE CIRCLE	61363

LIMITED COMMON ELEMENT		
NUMBER	ADDRESS	UNIT
(4)	43 WHITE PINE CIRCLE	43301
(5)	43 WHITE PINE CIRCLE	43302
(6)	43 WHITE PINE CIRCLE	43303
(7)	43 WHITE PINE CIRCLE	43304
(8)	43 WHITE PINE CIRCLE	43305
(9)	43 WHITE PINE CIRCLE	43306
(10)	43 WHITE PINE CIRCLE	43307
(11)	43 WHITE PINE CIRCLE	43308
(12)	43 WHITE PINE CIRCLE	43309
(13)	43 WHITE PINE CIRCLE	43310
(14)	43 WHITE PINE CIRCLE	43311
(15)	43 WHITE PINE CIRCLE	43312
(16)	43 WHITE PINE CIRCLE	43313
(17)	43 WHITE PINE CIRCLE	43314
(18)	43 WHITE PINE CIRCLE	43315
(19)	43 WHITE PINE CIRCLE	43316
(20)	43 WHITE PINE CIRCLE	43317
(21)	43 WHITE PINE CIRCLE	43318
(22)	43 WHITE PINE CIRCLE	43319
(23)	43 WHITE PINE CIRCLE	43320
(24)	43 WHITE PINE CIRCLE	43321
(25)	43 WHITE PINE CIRCLE	43322
(26)	43 WHITE PINE CIRCLE	43323
(27)	43 WHITE PINE CIRCLE	43324
(28)	43 WHITE PINE CIRCLE	43325
(29)	43 WHITE PINE CIRCLE	43326
(30)	43 WHITE PINE CIRCLE	43327
(31)	43 WHITE PINE CIRCLE	43328
(32)	43 WHITE PINE CIRCLE	43329
(33)	43 WHITE PINE CIRCLE	43330
(34)	43 WHITE PINE CIRCLE	43331
(35)	43 WHITE PINE CIRCLE	43332
(36)	43 WHITE PINE CIRCLE	43333
(37)	43 WHITE PINE CIRCLE	43334
(38)	43 WHITE PINE CIRCLE	43335
(39)	43 WHITE PINE CIRCLE	43336
(40)	43 WHITE PINE CIRCLE	43337
(41)	43 WHITE PINE CIRCLE	43338
(42)	43 WHITE PINE CIRCLE	43339
(43)	43 WHITE PINE CIRCLE	43340
(44)	43 WHITE PINE CIRCLE	43341
(45)	43 WHITE PINE CIRCLE	43342
(46)	43 WHITE PINE CIRCLE	43343
(47)	43 WHITE PINE CIRCLE	43344
(48)	43 WHITE PINE CIRCLE	43345
(49)	43 WHITE PINE CIRCLE	43346
(50)	43 WHITE PINE CIRCLE	43347
(51)	43 WHITE PINE CIRCLE	43348
(52)	43 WHITE PINE CIRCLE	43349
(53)	43 WHITE PINE CIRCLE	43350
(54)	43 WHITE PINE CIRCLE	43351
(55)	43 WHITE PINE CIRCLE	43352
(56)	43 WHITE PINE CIRCLE	43353
(57)	43 WHITE PINE CIRCLE	43354
(58)	43 WHITE PINE CIRCLE	43355
(59)	43 WHITE PINE CIRCLE	43356
(60)	43 WHITE PINE CIRCLE	43357
(61)	43 WHITE PINE CIRCLE	43358
(62)	43 WHITE PINE CIRCLE	43359
(63)	43 WHITE PINE CIRCLE	43360
(64)	43 WHITE PINE CIRCLE	43361
(65)	43 WHITE PINE CIRCLE	43362
(66)	43 WHITE PINE CIRCLE	43363
(67)	43 WHITE PINE CIRCLE	43364
(68)	43 WHITE PINE CIRCLE	43365
(69)	43 WHITE PINE CIRCLE	43366
(70)	43 WHITE PINE CIRCLE	43367
(71)	43 WHITE PINE CIRCLE	43368
(72)	43 WHITE PINE CIRCLE	43369
(73)	43 WHITE PINE CIRCLE	43370
(74)	43 WHITE PINE CIRCLE	43371
(75)	43 WHITE PINE CIRCLE	43372
(76)	43 WHITE PINE CIRCLE	43373
(77)	43 WHITE PINE CIRCLE	43374
(78)	43 WHITE PINE CIRCLE	43375
(79)	43 WHITE PINE CIRCLE	43376
(80)	43 WHITE PINE CIRCLE	43377
(81)	43 WHITE PINE CIRCLE	43378
(82)	43 WHITE PINE CIRCLE	43379
(83)	43 WHITE PINE CIRCLE	43380
(84)	43 WHITE PINE CIRCLE	43381
(85)	43 WHITE PINE CIRCLE	43382
(86)	43 WHITE PINE CIRCLE	43383
(87)	43 WHITE PINE CIRCLE	43384
(88)	43 WHITE PINE CIRCLE	43385
(89)	43 WHITE PINE CIRCLE	43386
(90)	43 WHITE PINE CIRCLE	43387
(91)	43 WHITE PINE CIRCLE	43388
(92)	43 WHITE PINE CIRCLE	43389
(93)	43 WHITE PINE CIRCLE	43390
(94)	43 WHITE PINE CIRCLE	43391
(95)	43 WHITE PINE CIRCLE	43392
(96)	43 WHITE PINE CIRCLE	43393
(97)	43 WHITE PINE CIRCLE	43394
(98)	43 WHITE PINE CIRCLE	43395
(99)	43 WHITE PINE CIRCLE	43396
(100)	43 WHITE PINE CIRCLE	43397

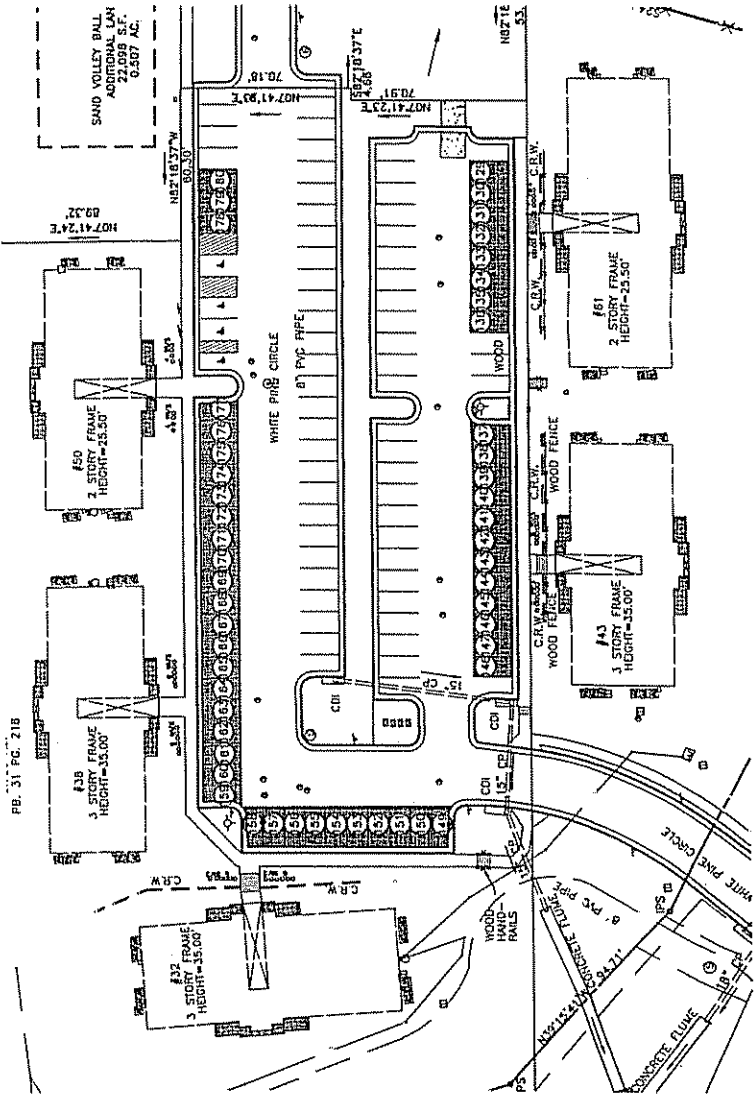
LIMITED COMMON ELEMENT		
NUMBER	ADDRESS	UNIT
(6)	38 WHITE PINE CIRCLE	38102
(7)	38 WHITE PINE CIRCLE	38103
(8)	38 WHITE PINE CIRCLE	38200
(9)	38 WHITE PINE CIRCLE	38201
(10)	38 WHITE PINE CIRCLE	38202
(11)	38 WHITE PINE CIRCLE	38203
(12)	38 WHITE PINE CIRCLE	38300
(13)	38 WHITE PINE CIRCLE	38301
(14)	38 WHITE PINE CIRCLE	38302
(15)	38 WHITE PINE CIRCLE	38303
(16)	38 WHITE PINE CIRCLE	38400
(17)	38 WHITE PINE CIRCLE	38401
(18)	38 WHITE PINE CIRCLE	38402
(19)	38 WHITE PINE CIRCLE	38403
(20)	38 WHITE PINE CIRCLE	38404
(21)	38 WHITE PINE CIRCLE	38405
(22)	38 WHITE PINE CIRCLE	38406
(23)	38 WHITE PINE CIRCLE	38407
(24)	38 WHITE PINE CIRCLE	38408
(25)	38 WHITE PINE CIRCLE	38409
(26)	38 WHITE PINE CIRCLE	38410
(27)	38 WHITE PINE CIRCLE	38411
(28)	38 WHITE PINE CIRCLE	38412
(29)	38 WHITE PINE CIRCLE	38413
(30)	38 WHITE PINE CIRCLE	38414
(31)	38 WHITE PINE CIRCLE	38415
(32)	38 WHITE PINE CIRCLE	38416
(33)	38 WHITE PINE CIRCLE	38417
(34)	38 WHITE PINE CIRCLE	38418
(35)	38 WHITE PINE CIRCLE	38419
(36)	38 WHITE PINE CIRCLE	38420
(37)	38 WHITE PINE CIRCLE	38421
(38)	38 WHITE PINE CIRCLE	38422
(39)	38 WHITE PINE CIRCLE	38423
(40)	38 WHITE PINE CIRCLE	38424
(41)	38 WHITE PINE CIRCLE	38425
(42)	38 WHITE PINE CIRCLE	38426
(43)	38 WHITE PINE CIRCLE	38427
(44)	38 WHITE PINE CIRCLE	38428
(45)	38 WHITE PINE CIRCLE	38429
(46)	38 WHITE PINE CIRCLE	38430
(47)	38 WHITE PINE CIRCLE	38431
(48)	38 WHITE PINE CIRCLE	38432
(49)	38 WHITE PINE CIRCLE	38433
(50)	38 WHITE PINE CIRCLE	38434
(51)	38 WHITE PINE CIRCLE	38435
(52)	38 WHITE PINE CIRCLE	38436
(53)	38 WHITE PINE CIRCLE	38437
(54)	38 WHITE PINE CIRCLE	38438
(55)	38 WHITE PINE CIRCLE	38439
(56)	38 WHITE PINE CIRCLE	38440
(57)	38 WHITE PINE CIRCLE	38441
(58)	38 WHITE PINE CIRCLE	38442
(59)	38 WHITE PINE CIRCLE	38443
(60)	38 WHITE PINE CIRCLE	38444
(61)	38 WHITE PINE CIRCLE	38445
(62)	38 WHITE PINE CIRCLE	38446
(63)	38 WHITE PINE CIRCLE	38447
(64)	38 WHITE PINE CIRCLE	38448
(65)	38 WHITE PINE CIRCLE	38449
(66)	38 WHITE PINE CIRCLE	38450
(67)	38 WHITE PINE CIRCLE	38451
(68)	38 WHITE PINE CIRCLE	38452
(69)	38 WHITE PINE CIRCLE	38453
(70)	38 WHITE PINE CIRCLE	38454
(71)	38 WHITE PINE CIRCLE	38455
(72)	38 WHITE PINE CIRCLE	38456
(73)	38 WHITE PINE CIRCLE	38457
(74)	38 WHITE PINE CIRCLE	38458
(75)	38 WHITE PINE CIRCLE	38459
(76)	38 WHITE PINE CIRCLE	38460
(77)	38 WHITE PINE CIRCLE	38461
(78)	38 WHITE PINE CIRCLE	38462
(79)	38 WHITE PINE CIRCLE	38463
(80)	38 WHITE PINE CIRCLE	38464
(81)	38 WHITE PINE CIRCLE	38465
(82)	38 WHITE PINE CIRCLE	38466
(83)	38 WHITE PINE CIRCLE	38467
(84)	38 WHITE PINE CIRCLE	38468
(85)	38 WHITE PINE CIRCLE	38469
(86)	38 WHITE PINE CIRCLE	38470
(87)	38 WHITE PINE CIRCLE	38471
(88)	38 WHITE PINE CIRCLE	38472
(89)	38 WHITE PINE CIRCLE	38473
(90)	38 WHITE PINE CIRCLE	38474
(91)	38 WHITE PINE CIRCLE	38475
(92)	38 WHITE PINE CIRCLE	38476
(93)	38 WHITE PINE CIRCLE	38477
(94)	38 WHITE PINE CIRCLE	38478
(95)	38 WHITE PINE CIRCLE	38479
(96)	38 WHITE PINE CIRCLE	38480
(97)	38 WHITE PINE CIRCLE	38481
(98)	38 WHITE PINE CIRCLE	38482
(99)	38 WHITE PINE CIRCLE	38483
(100)	38 WHITE PINE CIRCLE	38484

LEGEND

- LCE = LIMITED COMMON ELEMENT
- LCE SEE LCE TABLE
- ASSIGNMENT
- LCE SEE CONDO PLANS

SUBMITTED BY: SCOTT BORSCHUK, WILLIAM COCHRAN, LAURE FESSLER, HATHAN ALLEY, CHAO BURGESS, PRESTON JUDDSON

PB. 311 PG. 218



PLANS OF CARRIAGE POINTE AT AQUA
 A CONDOMINIUM BEING ON PARCELS 31, 32 AND 33 VILLAGES OF AQUA SECTION ONE REMAINDER OF PARCEL 31-1 VILLAGES OF AQUA SECTION TWO PARCELS 31-14 PLAT BOOK 30 PAGE 248 PARCEL 31-4 VILLAGES OF AQUA SECTION THREE PLAT BOOK 31 SEPTEMBER 29, 2005 SCALE: 1"=30' REV. DECEMBER 21, 2005

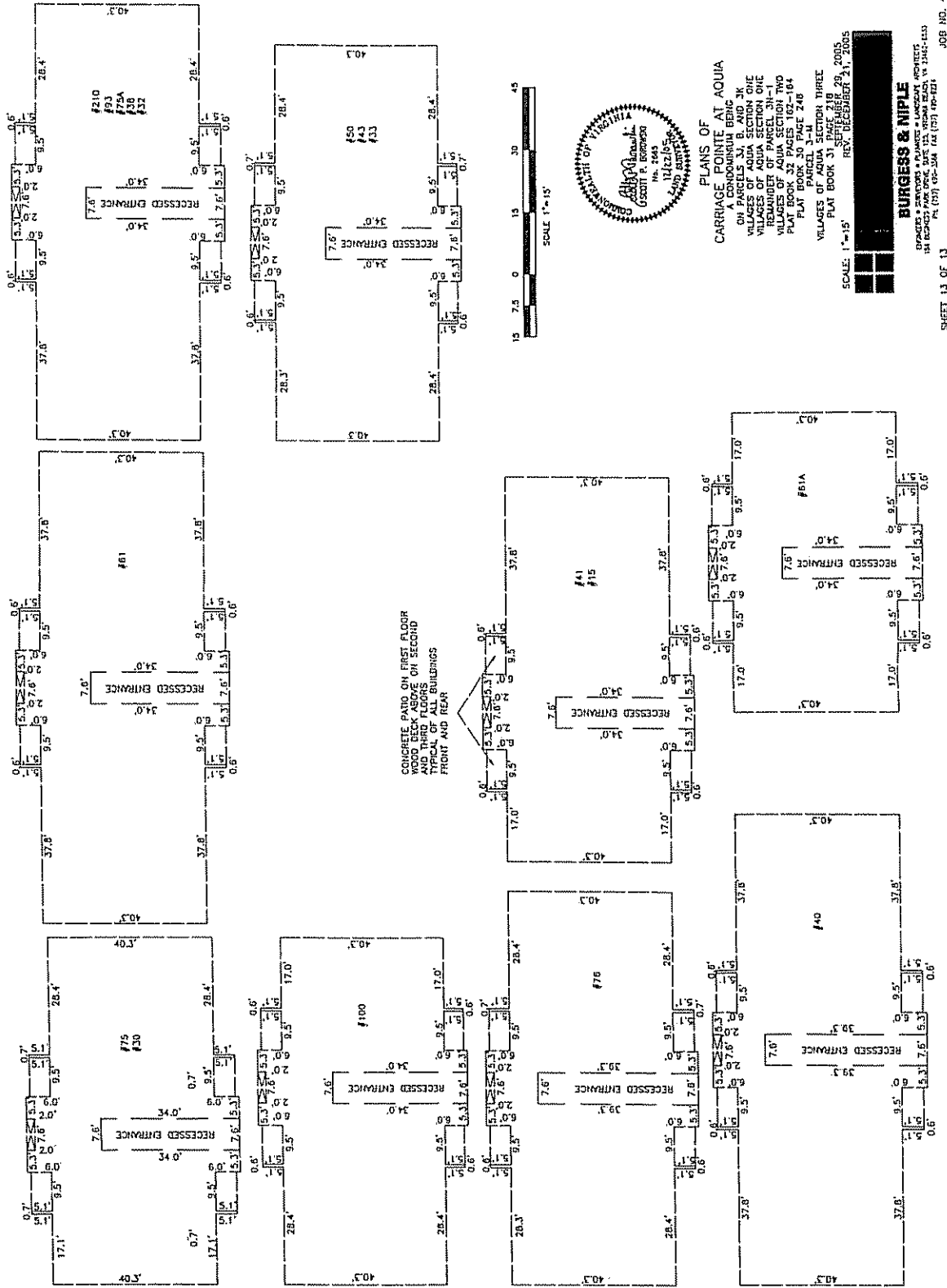
BURGESS & NIPLÉ
 ENGINEERS • ARCHITECTS • LANDSCAPE ARCHITECTS
 136 BURGESS PARK DRIVE, SUITE 113, WESTON, FLORIDA 33412-1113
 PH: (754) 400-2500 FAX: (754) 400-1214

JOB NO. 41417

BURGESS & NIPILE

PL01TER: 12/22/2005 4:59:33 PM

BUILDING DETAILS



S:\JOBS\11417\cadd\CONDO\PL14.dwg 12/22/2005 4:57:28 PM Hstfkl, Brandon



PLANS OF
CARRIAGE POINTE AT AQUA
A CONDOMINIUM BEING
ON PARCELS 31, B, AND 3K
VILLAGES OF AQUA SECTION ONE
VILLAGES OF AQUA SECTION ONE
REAR PART OF PARCEL 31-
VILLAGES OF AQUA SECTION TWO
PLAT BOOK 32 PAGES 162-164
PLAT BOOK 30 PAGE 248
VILLAGES OF AQUA SECTION THREE
PLAT BOOK 31, PAGE 218, 2005
REV. DECEMBER 31, 2005



BURGESS & NIPILE

REGISTERED PROFESSIONAL ARCHITECTS
1400 EAST BROADWAY, SUITE 200, RICHMOND, VA 23219-4433
PH (703) 682-3344 FAX (703) 682-1211