



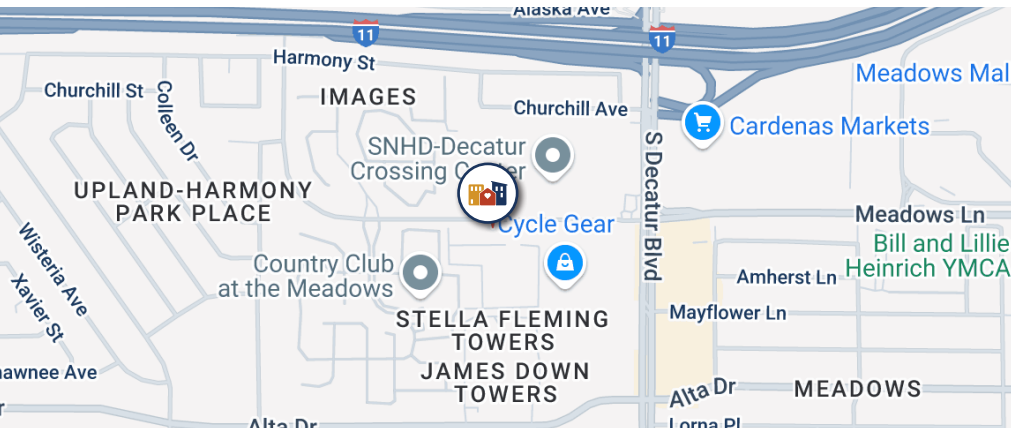
DECATUR COMMONS

FAMILY APARTMENTS



PROPERTY FEATURES

- 24-Hour Emergency Maintenance
- On-Site Resident Services
- Water, Trash and Sewer Included
- Online Payments
- Smoke-Free Community
- In-Unit Washer and Dryer
- Gated Community
- Courtyard/Picnic Area
- Computer Lab
- Covered Parking
- Fitness Center
- Community Rooms
- Playground
- Pool
- Dog Park



5151 West Meadows Lane
Las Vegas, NV 89107

(702) 410-2765
TTY-(800) 326-6868

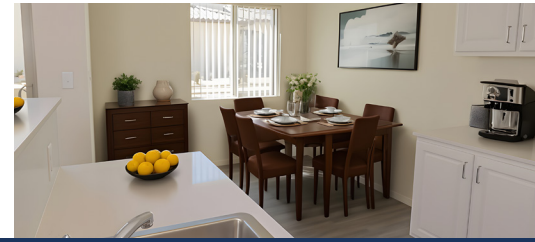
Property hours may vary

UPDATED: 6/9/2026



For more info/to schedule a visit, scan the QR code or e-mail
decaturcommons@nevadahand.org





DECATUR COMMONS

FAMILY APARTMENTS

RENT AND INCOME REQUIREMENTS
+ FLOOR PLANS

1 BED / 1 BATH • 739 Sq. Ft.				
Annual Gross Income Limits*				
MONTHLY RENT	TOTAL # OF UNITS	MINIMUM	MAXIMUM	
\$525	7	\$12,600	1-Person	\$22,200
			2-Person	\$25,350
\$1,119	34	\$26,856	1-Person	\$44,340
			2-Person	\$50,640
\$1,317	6	\$31,608	1-Person	\$51,730
			2-Person	\$59,080
\$1,515	1	\$36,360	1-Person	\$59,120
			2-Person	\$67,520

3 BED / 2 BATH • 1165 Sq. Ft.				
Annual Gross Income Limits*				
MONTHLY RENT	TOTAL # OF UNITS	MINIMUM	MAXIMUM	
\$719	3	\$17,256	3-Person	\$28,500
			5-Person	\$34,200
\$1,542	37	\$37,008	3-Person	\$57,000
			5-Person	\$68,400
\$1,816	7	\$43,584	3-Person	\$66,500
			5-Person	\$79,800
\$2,091	1	\$50,184	3-Person	\$76,000
			5-Person	\$91,200

2 BED / 1 BATH • 924 Sq. Ft.				
Annual Gross Income Limits*				
MONTHLY RENT	TOTAL # OF UNITS	MINIMUM	MAXIMUM	
\$623	11	\$14,952	2-Person	\$25,350
			4-Person	\$31,650
\$1,098	1	\$26,352	2-Person	\$42,200
			4-Person	\$52,750
\$1,336	111	\$32,064	2-Person	\$50,640
			4-Person	\$63,300
\$1,573	20	\$37,752	2-Person	\$59,080
			4-Person	\$73,850
\$1,811	1	\$43,464	2-Person	\$67,520
			4-Person	\$84,400

APPLICATION INFORMATION

Section 8 Vouchers Accepted**

*Minimum income requirement does not apply to Section 8 holders.

Screening Fee:
\$26 per Adult HH Member
\$17 for Live-in-Aide

Holding Deposit:
\$250

Security Deposit:
\$600 or up to 1 Month Rent on Conditional Credit

Pet Fee:
\$250 per pet
Weight & Breed Restrictions Apply

