

Enjoy your ideal lifestyle
by making your home at...

Beaver Creek

TOWNHOMES



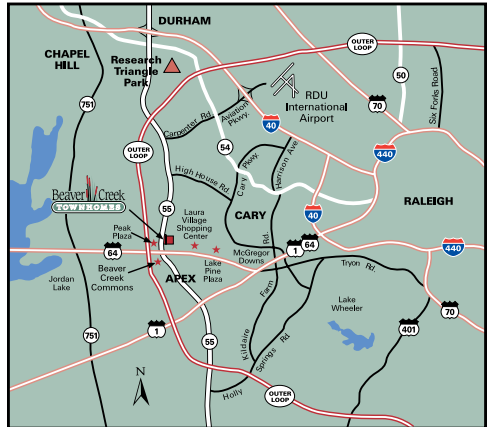
Distinctive Apartment Living

Beaver Creek is a charming rental community, situated on a rolling landscape of mature trees and luscious greenery. Located in Historic Apex, North Carolina at the corner of Highway 64 and Route 55, puts you minutes from interstate access, the Research Triangle, Lake Jordan State Recreation Area, top rated public and private schools, entertainment, shopping, and more!

Beaver Creek offers thoughtful floorplans with private entrances. Your fully equipped home offers you designer kitchens, washer/dryer hook ups, and abundant closet space. For your recreation and relaxation you will enjoy the luxury of a cardiovascular fitness center, resort inspired salt water swimming pool, and resident lounge.

Each of the floor plans offers unique opportunities for you to decorate your home to your own special tastes. Come experience carefree living at its finest by making your new home here, at Beaver Creek.

Call or Text Us Today!
919-387-4666



About Palms Associates LLC:

The Palms is professionally managed and maintained by Palms Associates LLC, a national leader in development, construction, and property management of multifamily rental communities and commercial properties. With over 50 years of experience, our dedicated team of over 200 professionals manages over 6,000 apartment residences throughout the Southeast. Most importantly, we are quality people working diligently every day to enhance our residents' lifestyles.

For more information visit us at www.palms.net.

201 Fantail Lane

Apex, NC 27523

www.beavercreekapts.com

Call or Text Us Today! 919-387-4666

Premium Features and Amenities:

- Resort Inspired Salt Water Swimming Pool with Cabanas & Outdoor Kitchen
- Fenced in Bark Park
- Samsung Stainless Steel Appliances (*offered in premium units*)
- 24-hr Fitness Center
- Resident Lounge with Coffee Bar & Fireplace
- Playground
- Resident Activities & Socials
- Car Care Center
- Private Entrances
- Private Patio/Balcony
- Spacious Closets
- In-unit Laundry Hook Ups
- Professional On-site Management
- 24-hr Emergency Maintenance
- 24-hr Package Locker
- Open Floor Plans with Outdoor Space
- Detached Garages

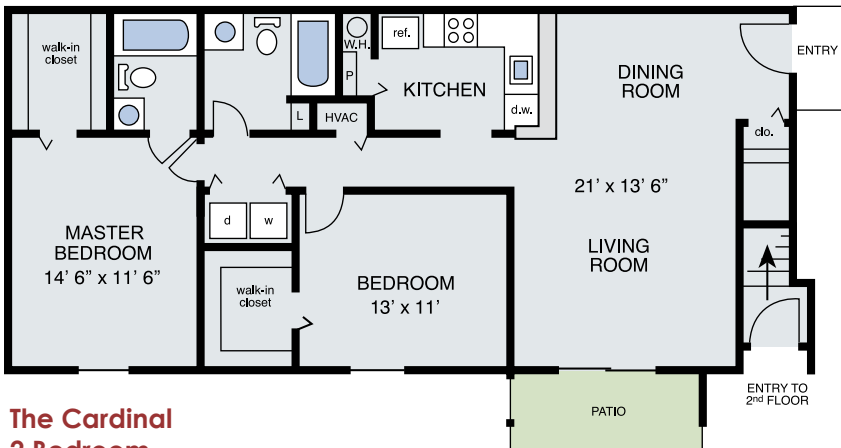


1-2 Bedroom Garden Apartments



The Billmore 1 Bedroom

1 Bath
 790 sq ft



The Cardinal 2 Bedroom

2 Bath
 1074 sq ft

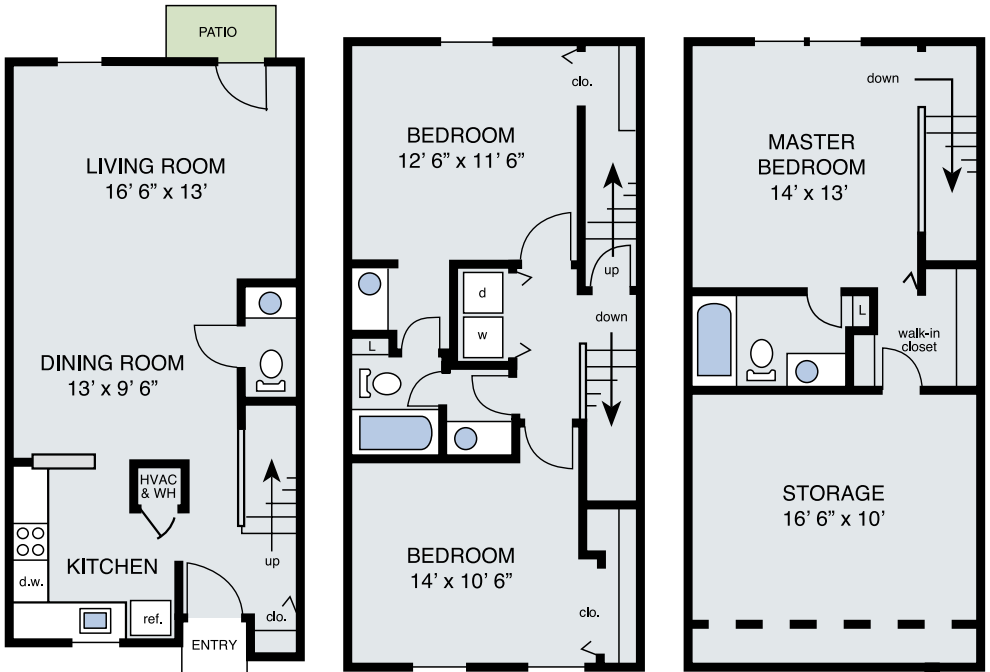
201 Fantail Lane

Apex, NC 27523

www.beavercreekapts.com

Call or Text Us Today! 919-387-4666

3 Bedroom Townhome



The Magnolia

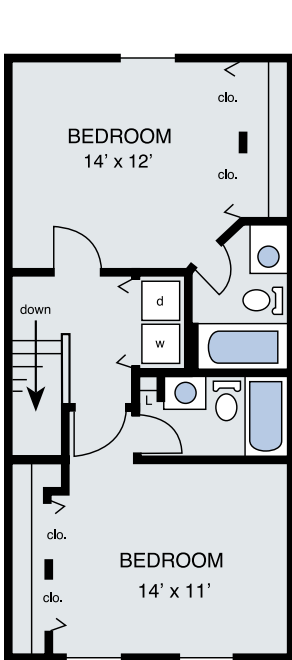
3 Bedroom

2.5 Bath

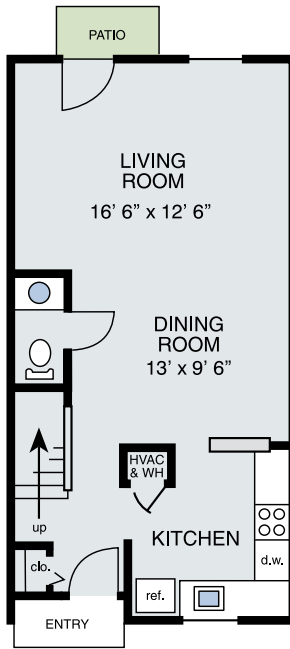
1705 sq ft



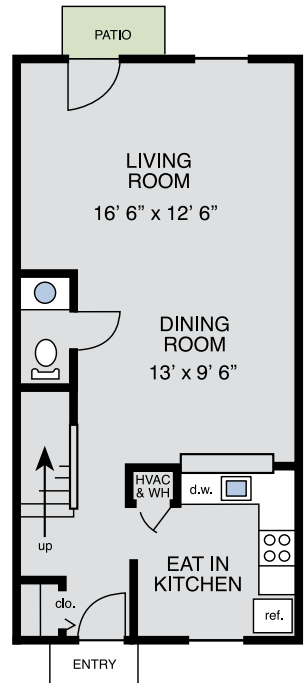
2 Bedroom Townhome



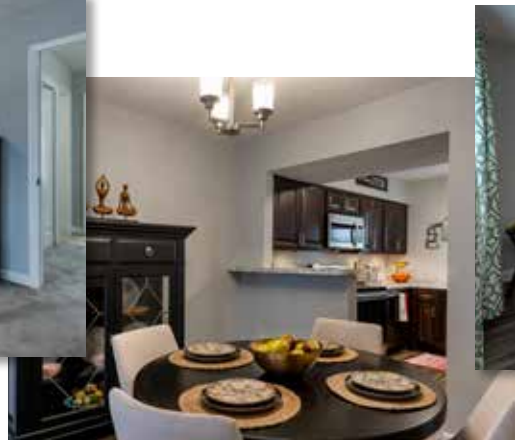
The Dogwood
2 Bedroom
 2.5 Bath



Option 1
 1154 sq ft



Option 2
 1181 sq ft



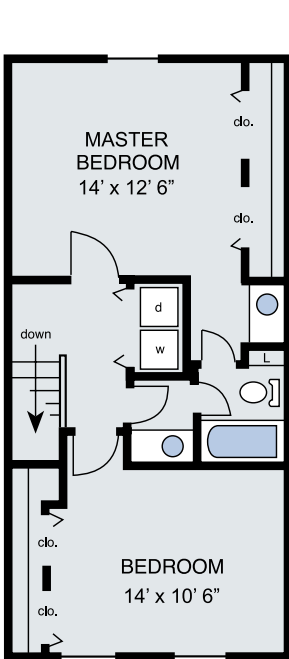
201 Fantail Lane

Apex, NC 27523

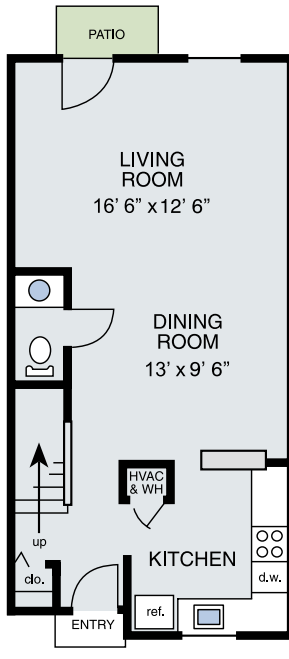
www.beavercreekapts.com

Call or Text Us Today! 919-387-4666

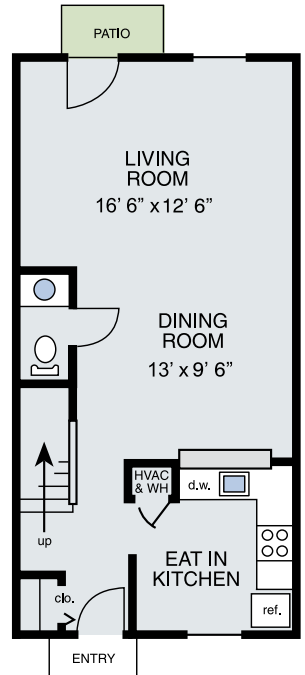
2 Bedroom Townhome



The Charlotte
2 Bedroom
1.5 Bath



Option 1
1154 sq ft



Option 2
1181 sq ft



201 Fantail Lane
Apex, NC 27523
www.beavercreekapts.com
Call or Text Us Today! 919-387-4666

