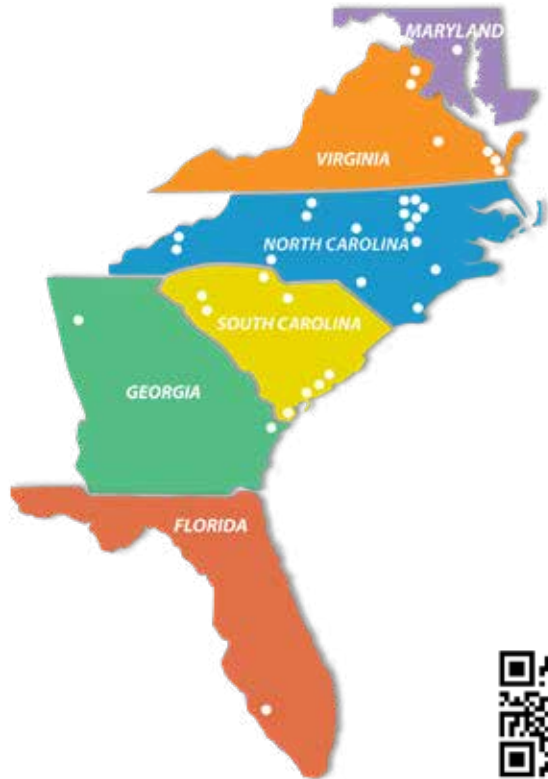


About Palms Associates LLC

Beaver Creek is professionally managed and maintained by Palms Associates LLC, a national leader in development, construction, and property management of multifamily rental communities and commercial properties. With over 50 years of experience, our dedicated team of over 200 professionals manages over 6,000 apartment residences throughout the Southeast. Most importantly, we are quality people working diligently every day to enhance our residents' lifestyles.

For more information visit us at www.palms.net.



WWW.PALMS.NET



Palms Associates, LLC
397 Little Neck Road - Building 3400, Suite 200
Virginia Beach, VA 23452 | 757-340-3669



Beaver Creek TOWNHOMES



Apex | North Carolina
www.beavercreektpts.com

A Planned Community

Beaver Creek is a charming rental community, situated on a rolling landscape of mature trees and luscious greenery. Located in Historic Apex, North Carolina at the corner of Highway 64 and Route 55, puts you minutes from interstate access, the Research Triangle, Lake Jordan State Recreation Area, top rated public and private schools, entertainment, shopping, and more!

Beaver Creek offers thoughtful floorplans with private entrances. Your fully equipped home offers you designer kitchens, washer/dryer hook ups, and abundant closet space. For your recreation and relaxation you will enjoy the luxury of a cardiovascular fitness center, resort inspired salt water swimming pool, and resident lounge.

Each of the floor plans offers unique opportunities for you to decorate your home to your own special tastes. Come experience carefree living at its finest by making your new home here, at Beaver Creek.

Call or Text Us Today!
919-387-4666



Beaver Creek Apartments and Townhomes
201 Fantail Lane, Apex, NC 27523

Premium Features and Amenities

- Resort Inspired Salt Water Swimming Pool with Cabanas & Outdoor Kitchen
- Fenced in Bark Park
- Stainless Steel Appliances (offered in premium units)
- 24-hr Fitness Center
- Resident Lounge with Coffee Bar & Fireplace
- Playground
- Resident Activities & Socials
- Car Care Center
- Private Entrances
- Private Patio/Balcony
- Spacious Closets
- In-unit Laundry Hook Ups
- Professional On-site Management
- 24-hr Emergency Maintenance
- 24-hr Package Locker
- Open Floor Plans with Outdoor Space
- Detached Garages

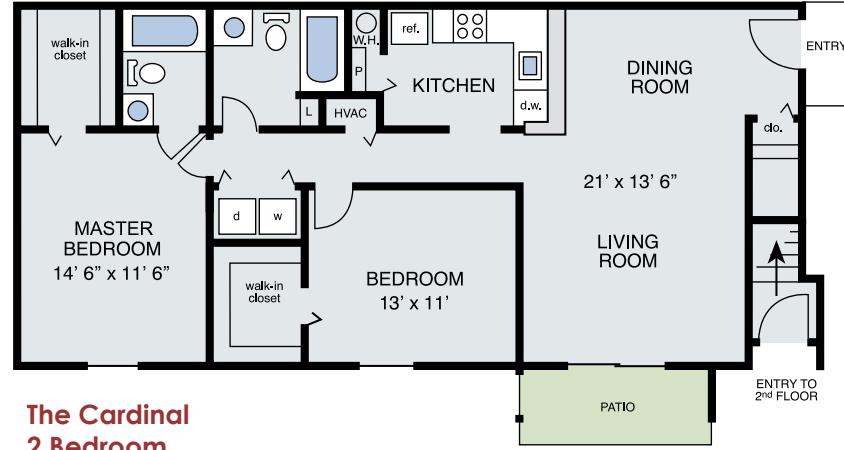


Phone: 919-387-4666
Email: beavercreek@palms.net

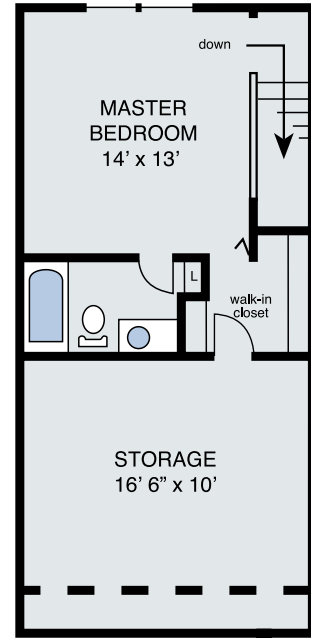
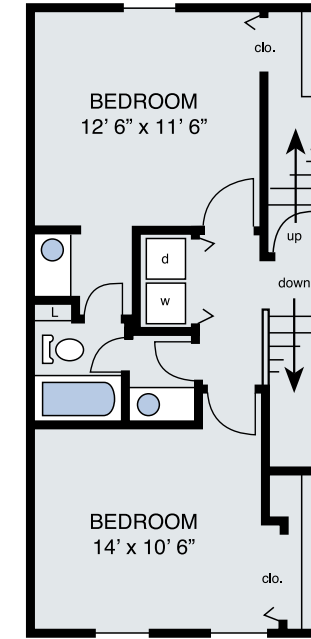
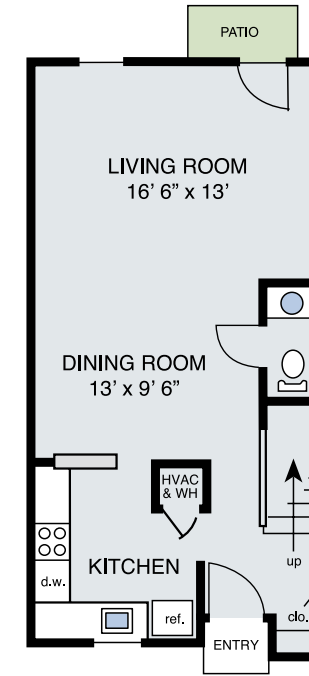
1-2 Bedroom Garden Apartments



The Biltmore
1 Bedroom
1 Bath
790 sq ft

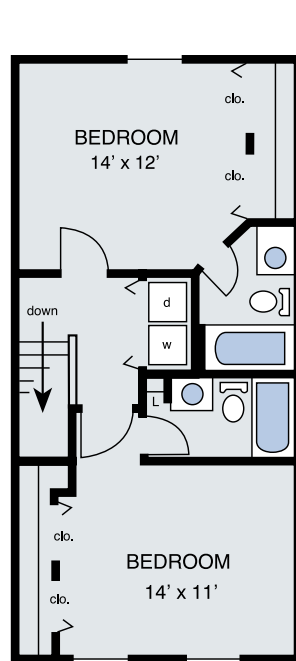


The Cardinal
2 Bedroom
2 Bath
1074 sq ft

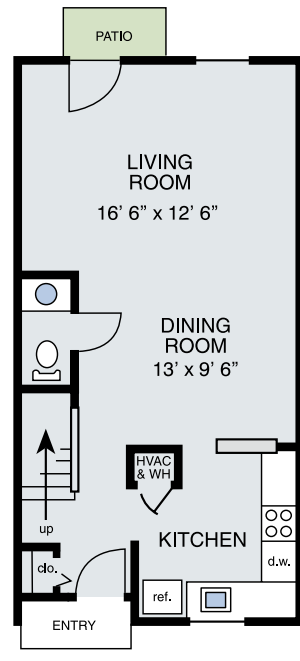


The Magnolia
3 Bedroom
2.5 Bath
1705 sq ft

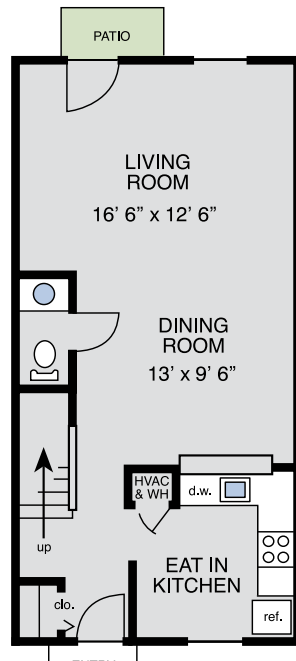
2 Bedroom Townhomes



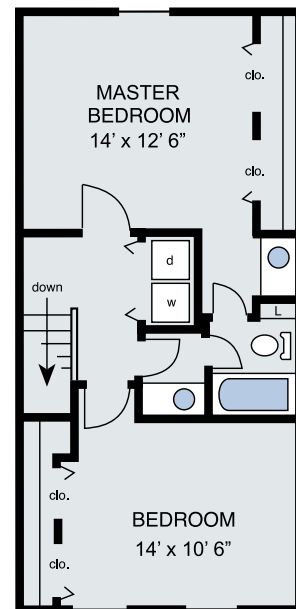
The Dogwood
2 Bedroom
2.5 Bath



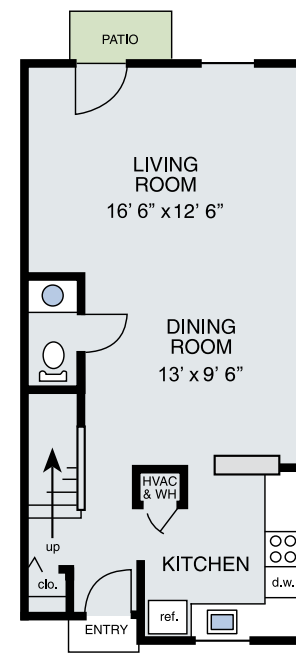
Option 1
1154 sq ft



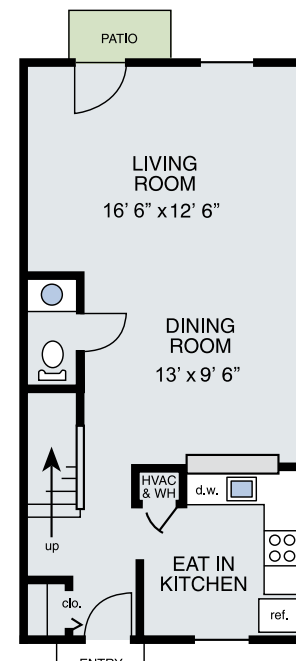
Option 2
1181 sq ft



The Charlotte
2 Bedroom
1.5 Bath



Option 1
1154 sq ft



Option 2
1181 sq ft

Floor plans to satisfy every lifestyle!