

Devon Pointe

TOWNHOMES

Distinctive Apartment Living

A Planned Community

Devon Pointe creates a welcome feeling with its southern mixture of open spaces, clusters of trees and greenery. Located in Goose Creek, South Carolina only 25 minutes from historic downtown Charleston, putting you minutes from schools, golfing, entertainment, shopping, and Interstate accessibility. Our location truly sets us above the rest.

At **Devon Pointe** you will experience spacious apartments and townhomes, far from ordinary. Your fully equipped home offers you designer kitchens with modern appliances, interior storage, great rooms, enormous closet space, and optional washers and dryers for your convenience. For your recreation and relaxation you will enjoy the luxury of an onsite fitness center, community clubhouse, business center and sparkling pool.

Each of the seven styles of floor plans offers unique opportunities for you to decorate your home to your own special tastes. Come experience carefree living at its finest by making your new home here, at **Devon Pointe**.



DIRECTIONS:

From Summerville: Take I-26 East to US-78 exit number 205B towards Goose Creek/US-52. Merge onto University Blvd/US-78. After approx. 2 miles follow US-52/Rivers Avenue interchange into Goose Creek and merge left at the main light onto US-176. Property is approx. 3 miles on the left.

From Charleston: Take I-26 West to exit 208 towards Goose Creek/Moncks Corner. Merge onto Rivers Avenue. In approx. 1.6 miles, Rivers becomes US-52 west. Travel 1.5 miles then stay to the left at the split. Once in Goose Creek merge left onto US-176. Property is approx. 3 miles on the left.

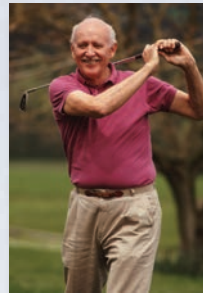
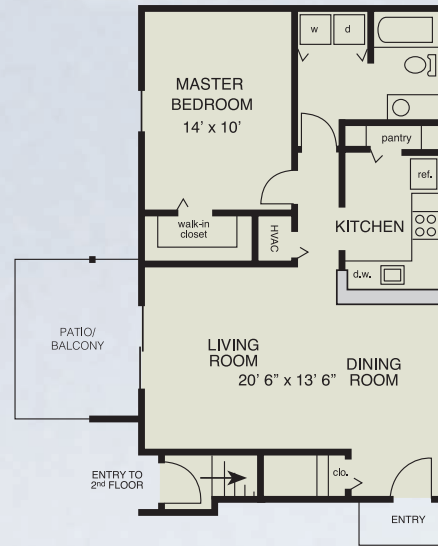
**Devon
Pointe**
TOWNHOMES
Distinctive Apartment Living

1601 Snow Goose Circle
Goose Creek, SC 29445
Tel: (843) 873-6656
Fax: (843) 832-6759
devonpointe@palms.net

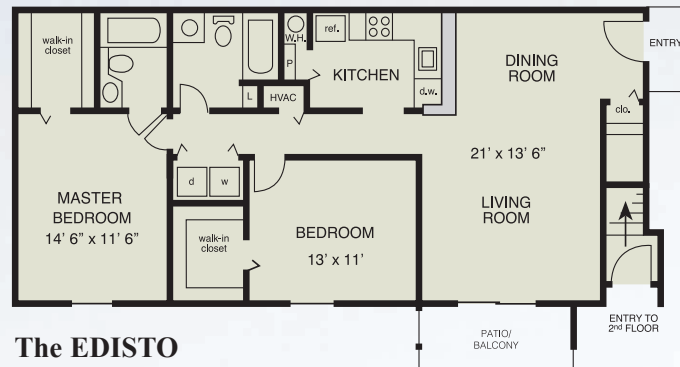
Goose Creek, South Carolina
www.devonpointeapts.com

CAREFREE LIVING AT ITS VERY BEST

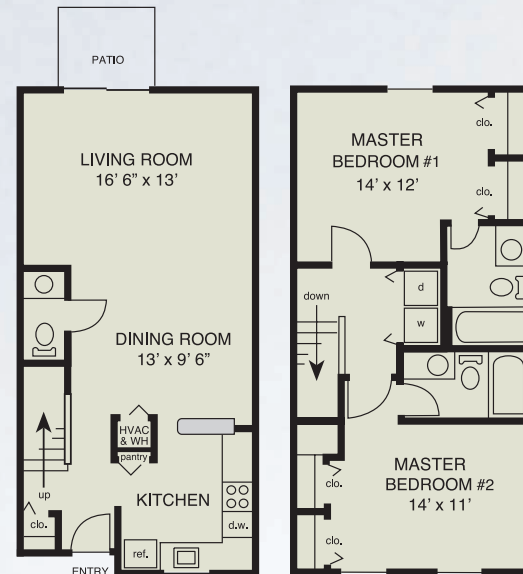
MANY EXCITING FLOOR PLANS TO CHOOSE FROM!



The BERKELEY
1 Bedroom 1 Bath Garden
790 Square Feet*
Rental Rate: \$ _____



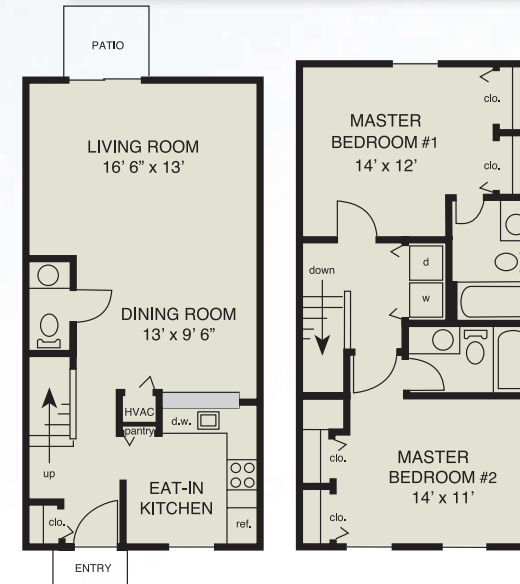
The EDISTO
2 Bedroom 2 Bath Garden
1074 Square Feet*
Rental Rate: \$ _____



The PALMETTO
2 Bedroom 2 1/2 Bath Townhouse
1154 Square Feet*
Rental Rate: \$ _____



The WINDSOR
3 Bedroom 2 1/2 Bath Townhouse
with Garage
1668 Square Feet*
Rental Rate: \$ _____



The PLANTATION
2 Bedroom 2 1/2 Bath Townhouse
1181 Square Feet*
Rental Rate: \$ _____



The SCARLETT
3 Bedroom 2 Bath Garden
1234 Square Feet*
Rental Rate: \$ _____



The WESCOTT
3 Bedroom 2 1/2 Bath Townhouse
1491 Square Feet*
Rental Rate: \$ _____

**Devon
Pointe**
TOWNHOMES

Distinctive Apartment Living

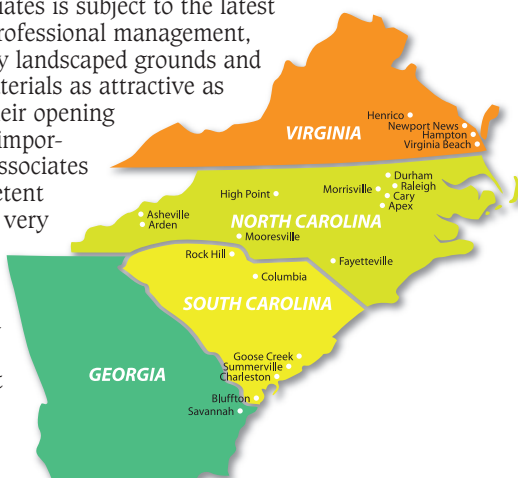
CALL OUR FRIENDLY STAFF AT
(843) 873-6656

www.devonpointeapts.com

*Interior space only.
Floor plans and sizes may vary in some apartments

History Of Palms Associates

Your community is managed and maintained by Palms Associates - one of the finest and most experienced Property Management firms in the Southeast. The trained staff of Palms Associates manages over 5,000 apartment residences in major cities throughout four states. Understandably, it requires a high degree of professionalism, know-how and experience for an organization to operate successfully on this level over the years. A community maintained by Palms Associates is subject to the latest procedures of professional management, to keep carefully landscaped grounds and high quality materials as attractive as they were on their opening day. But, most importantly, Palms Associates has nice, competent people working very hard every day for you! Our dedicated on-site management will make you feel right at home.



Distinctive Apartment Living

**FOR
COMPLETE
INFORMATION
CALL THE
PROPERTY
MANAGER**



GEORGIA

Fords Pointe/Savannah (912) 920-8900

NORTH CAROLINA

Beachwood Park/Raleigh (919) 217-7888

Beaver Creek/Apex (919) 387-4666

Crabtree Crossing/Morrisville (919) 380-9595

Haw Creek Mews/Asheville (828) 298-0000

Laurel Bluff/High Point (336) 841-7373

Longhill Pointe/Fayetteville (910) 483-2410

Northwoods Mews/Cary (919) 460-3838

Southridge/Arden-Asheville (828) 681-9998

Talbert Woods/Mooresville (704) 799-0456

The Mews/Durham (919) 489-1910

SOUTH CAROLINA

Bridge Pointe/Summerville (843) 486-0440

Devon Pointe/Goose Creek (843) 873-6656

Galleria Pointe/Rock Hill (803) 985-0444

Oldfield Mews/Bluffton-Hilton Head (843) 757-8944

Rice Terrace/Columbia (803) 865-1695

ShadowMoss Pointe/Charleston (843) 766-2220

The Islands/Charleston (843) 406-0660

VIRGINIA

Indian River Gardens/Va. Beach (757) 420-5729

Lakefield Mews/Henrico (804) 222-7777

Mill Creek Landing/Hampton (757) 850-8977

River Mews/Newport News (757) 887-5757

The Palms/Virginia Beach (757) 340-2028

You can reach us at: www.palms.net



PALMS ASSOCIATES

397 Little Neck Road 3400-200 Virginia Beach, VA 23452

Telephone (757) 340-3669