

# About Palms Associates

The Mews is professionally managed and maintained by Palms Associates, a national leader in development, construction, and property management of multifamily rental communities. With over 50 years of experience, our dedicated team of over 200 professionals manages over 6,000 apartment residences throughout Virginia, North Carolina, South Carolina, and Georgia.

A community maintained by Palms Associates is subject to the latest procedures of professional management, to keep carefully landscaped grounds and high quality materials as attractive as they were on opening day. Most importantly, we are quality people working diligently every day to enhance our residents' lifestyles.

For more information visit us at [www.palms.net](http://www.palms.net).



[WWW.PALMS.NET](http://WWW.PALMS.NET)



Palms Associates  
397 Little Neck Road - Building 3400, Suite 200  
Virginia Beach, VA 23452 | 757-340-3669



# THE MEWS TOWNHOMES



**Durham | North Carolina**  
[www.mewsapts.com](http://www.mewsapts.com)

# A Planned Community!

The Mews creates a welcome feeling with its southern blend of open spaces, clusters of trees, and greenery. Minutes from schools, shopping, interstates, Duke University, and the Research Triangle, this great location is ideal for your daily commute.

Our spacious garden apartments and townhomes are equipped with modern appliances, interior storage, private entrances, and a patio or balcony for each home. The Mews is a pet friendly community and offers many wonderful amenities including a salt water pool, dog park, playground, grilling areas, and more... creating a relaxing and comfortable environment.

Come experience carefree living at its finest by making your home here, at The Mews.



**From I-40:** Exit US 15-501 North. Turn right onto Garrett Rd. Go approximately one mile and turn left onto Old Chapel Hill Rd. Go about 100 yards and turn right continuing onto Old Chapel Hill Rd. Turn left on Williamsburg Rd. We are on the left.

**From I-85:** Exit US 15-501 South to Chapel Hill. Exit onto Martin Luther King Jr. Pkwy. Turn right onto Shannon Rd. Turn Right on Chapel Hill Rd. and then right onto Williamsburg Rd. We are on the left.

The Mews Apartments and Townhomes  
1801 Williamsburg Rd. Durham, NC 27707

# Apartment Amenities:

- Refreshed Interiors
- Upgraded Appliances
- Townhome Community
- Pet Friendly
- Private Entrances
- Patio/Balcony
- Wood Style Flooring
- Built-in Dishwasher
- Walk-in Closets
- and so much more!



# Community Amenities:

- Pay Rent Online
- Flexible Lease Terms
- Salt Water Pool
- Dog Park
- Community Clubhouse
- Grilling Area
- Playground
- Laundry Facility
- Close to Duke Hospital, Harris Teeter, the Library, and Post Office
- Minutes from I-40 and I-85
- 24/7 Emergency Maintenance
- and so much more!

Phone: 919-489-1910

Email: [durhammews@palms.net](mailto:durhammews@palms.net)

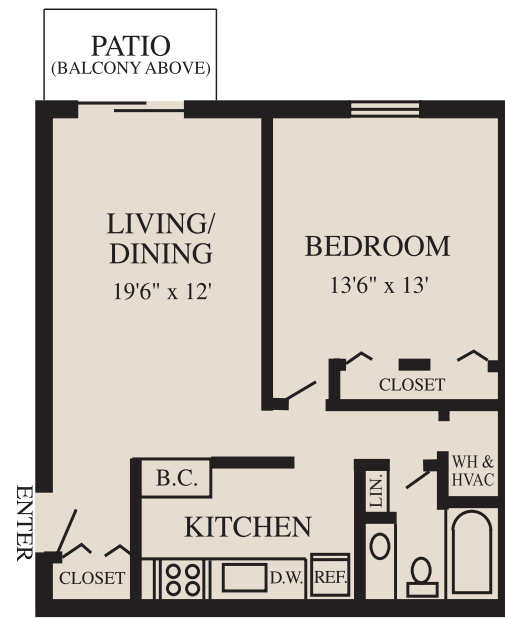




*Floor plans  
to satisfy your  
lifestyle!*

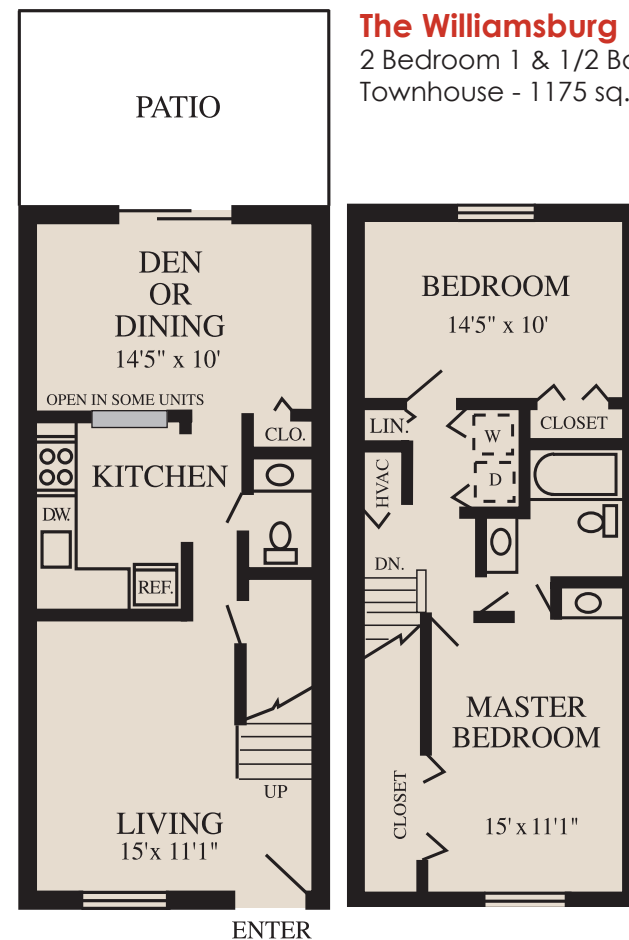


\* Interior space only. Floor plans and sizes may vary in some apartments.



#### The Dover

1 Bedroom 1 Bath Garden - 750 sq. ft.\*



#### The Williamsburg

2 Bedroom 1 & 1/2 Bath  
Townhouse - 1175 sq. ft.\*

# A Great Durham Location!

Contact our friendly staff today!

919-489-1910 | [durhammews@palms.net](mailto:durhammews@palms.net)

