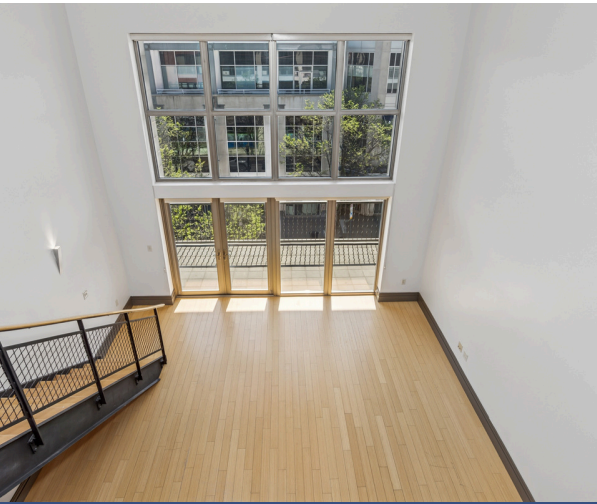


# the Flats @ SouthSide

WORKS



## The Next Generation Of Apartment Living Has Arrived

Our Pittsburgh apartments come in studio, one, and two-bedroom layouts that are spacious and adaptable. A variety of interior luxuries adorn them including an in-home washer and dryer, fully equipped kitchens, high-speed internet access, and more. As a resident of our pet-friendly community, you will also have exclusive access to package lockers, bike storage, and a pet wash station among other life-enhancing amenities.

### Apartment Amenities

- Washer/Dryer
- Balcony
- Central Air/Heat
- High-Speed Internet Access
- Sprinkler System
- Large Closets
- Individual Climate Control
- Full Appliance Package
- Window Coverings

### Community Amenities

- Pet friendly
- Availability 24 Hours
- Controlled Access
- Pet Wash Station
- Elevator
- On-Site Maintenance and Management
- Garage Parking

# Top-Notch & Tight-Knit

We do more than create cool communal spaces and hope that people will meet one another there. We know that it takes a lot more than a set of furniture to make a place feel like home. Which is why we go to great lengths to foster some pretty great communities.



## Schedule a Tour Today

[FlatsAtSouthsideWorks.com](https://FlatsAtSouthsideWorks.com)



the Flats @  
**SouthSide**  
WORKS



The Flats At Southside Works  
2635 E Carson St, Pittsburgh, PA 15203 | (855) 338-1633

Visit our website