

Section 4: Info on Efficient Use of Energy, Water & Natural Resources

Energy

A LEED Home is required to achieve a minimum standard of energy efficiency according to the HERS® (Home Energy Rating System) Index. With increasing interest in green building, energy efficiency is the place to start. That is because the energy used in homes often comes from the burning of fossil fuels at power plants, which contributes to smog, acid rain, and emissions that increase the risk of climate change. So, the less energy used, the less air pollution generated. Energy saving tips from Idaho Power are available at their website: <https://www.idahopower.com/energy-environment/ways-to-save/savings-for-your-home/tips-and-resources/energy-saving-tips/>

Water

LEED points are available for water reuse, high-efficiency irrigation systems, drought-tolerant plants, and indoor plumbing fixtures. Water is vital to the survival of everything on the planet and is limited in supply. The Earth might seem like it has abundant water, but in fact only 1% is available for human use. While the population and the demand on freshwater resources are increasing, supply remains constant. Managing water is a growing concern in the U.S. Communities across the country are starting to face challenges regarding water supply and water infrastructure. WaterSense is a program developed by the EPA to protect the future of our nation's water supply by promoting water efficiency and enhancing the market for water-efficient products, programs, and practices. (<http://www.epa.gov/WaterSense>)

Natural Resources

A LEED Home is required to manage construction waste and minimize wood framing waste. There are optional credits available for using environmentally preferable materials and products. Refer to the “Materials & Resources (MR)” category of the LEED Checklist in Section 2: LEED Documents for information on the specific materials used in this home and on the portion of construction waste that was diverted from the landfill on this project.

Reduce, Reuse, Recycle!

Recycling is one of the most feel-good and useful environmental practices around. The benefits go way beyond reducing piles of garbage -- recycling protects habitat and biodiversity, and saves energy, water, and resources such as trees and metal ores. Recycling also cuts global warming pollution from manufacturing, landfilling and incinerating.

But recycling means a lot more than bringing your newspapers and cans to the curb. Truly successful recycling involves minimizing waste along the entire life cycle of a product, from acquiring raw materials to manufacturing, using and disposing of a product. Most environmental impacts associated with the products we buy occur before we open the package, so buying products made from recycled materials is just as important as sorting waste into the right bins. And when we reduce the amount of stuff we buy in the first

place, and reuse what we can, we reduce the environmental harm associated with acquiring raw materials and manufacturing.

Tips to help you cut down on waste and boost your recycling skills



Shop smart: Purchase paper and other products for your home that are made with post-consumer recycled content and packaged in recyclable materials. Buy in bulk when you can to reduce the amount of packaging that gets thrown away.

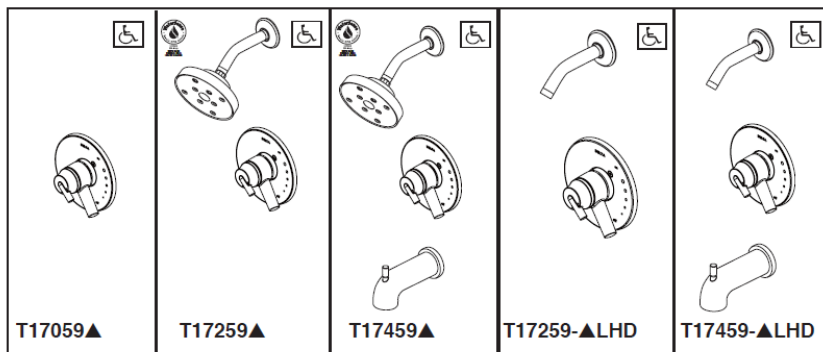
Convenience is key: Put collection bins in your home in a convenient location. Use bins that follow your city's recycling policies, so you don't have to separate it out later. If you tend to forget what's recyclable and what's not, post a sign from the recycling company or make a sign and post it near your bins.

Don't forget to reuse: Paper, plastic, glass and cans aren't the only items that should be diverted from incinerators and landfills. Reduce the environmental impacts of organic waste by composting food scraps, and by leaving short grass clippings on lawns to decompose. Donate old clothing to homeless shelters, thrift stores, animal shelters and other community organizations. Take advantage of manufacturer take-back programs for your unwanted electronics.

Make waste an endangered species: Bring your own reusable bags to local stores. Keep a ceramic mug for water or coffee rather than using disposable paper or plastic foam cups. Most cities in the United States have clean, drinkable water, so use tap water and refillable water bottles instead of buying bottled water.

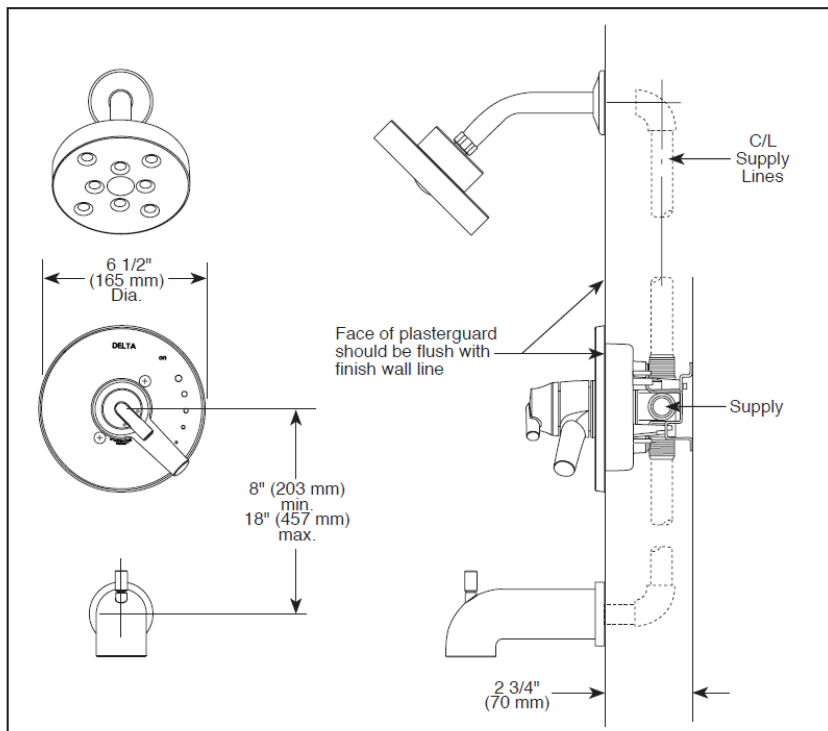
Enclosed in this Section:

-  Specifications for High-Efficiency Plumbing Fixtures (showerhead, toilet, and bathroom and kitchen faucet)
-  Publication from the EPA – *Using Water Efficiently: Ideas for Residences*

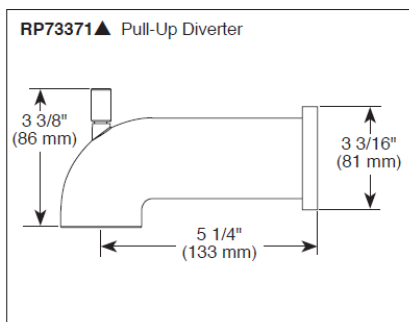
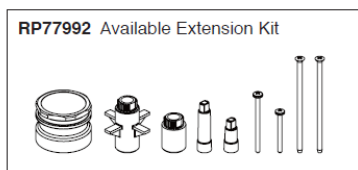
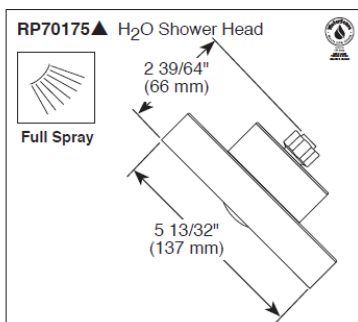


Submitted Model No.: _____

Specific Features: _____



▲ Designate Proper Finish Suffix



see what Delta can do™

TUB AND SHOWER FAUCET TRIM

- Trinsic® Series
- Valve Only (T17059)
- Shower Only (T17259)
- Tub/Shower (T17459)

FEATURES:

- Monitor® 17 Series pressure balanced bath mixing valve with trim
- Single function H₂Okinetic® Technology shower head

STANDARD SPECIFICATIONS:

- Maintains a balanced pressure of hot and cold water even when a valve is turned on or off elsewhere in the system
- For use with MultiChoice® Universal rough valve body (R10000 Series)
- Back-to-back installation capability
- Solid brass forged body
- Lever volume control handle; temperature adjustment dial
- Field adjustable to limit handle rotation into hot water zone
- Maximum dial rotation adjustable between 90° and 180°
- All parts replaceable from the front of the valve
- Maximum 1.75 gpm @ 80 psi, 6.6 L/min @ 550 kPa
- Tub port maximum flow rate 6.2 gpm @ 60 psi with R10000-UNBX
- Shower arm overall horizontal length = 5 1/2" (138 mm), including threaded ends
- Red/blue pad print temperature indicators on the temperature adjustment dial
- 1/2" CWT slip-on spout adapter
- "LHD" models indicate less showerhead
- Stem extension kit RP77992 can be ordered to allow for an additional 1 3/4" wall thickness. RP77992 ships with chrome escutcheon screws. For special finishes also order RP12630 escutcheon screws in desired finish.

WARRANTY

- Parts and Finish - Lifetime limited warranty; or for commercial purchasers, 10 years for multi-family residential (apartments and condominiums) and 5 years for all other commercial uses, in each case from the date of purchase.
- Electronic Parts and Batteries (if applicable) - 5 years from the date of purchase; or for commercial purchasers, 1 year from the date of purchase. No warranty is provided on batteries.

COMPLIES WITH:

- ASME A112.18.1 / CSA B125.1
- ASSE 1016
- Indicates compliance to ICC/ANSI A117.1- Valve control only
- EPA WaterSense®

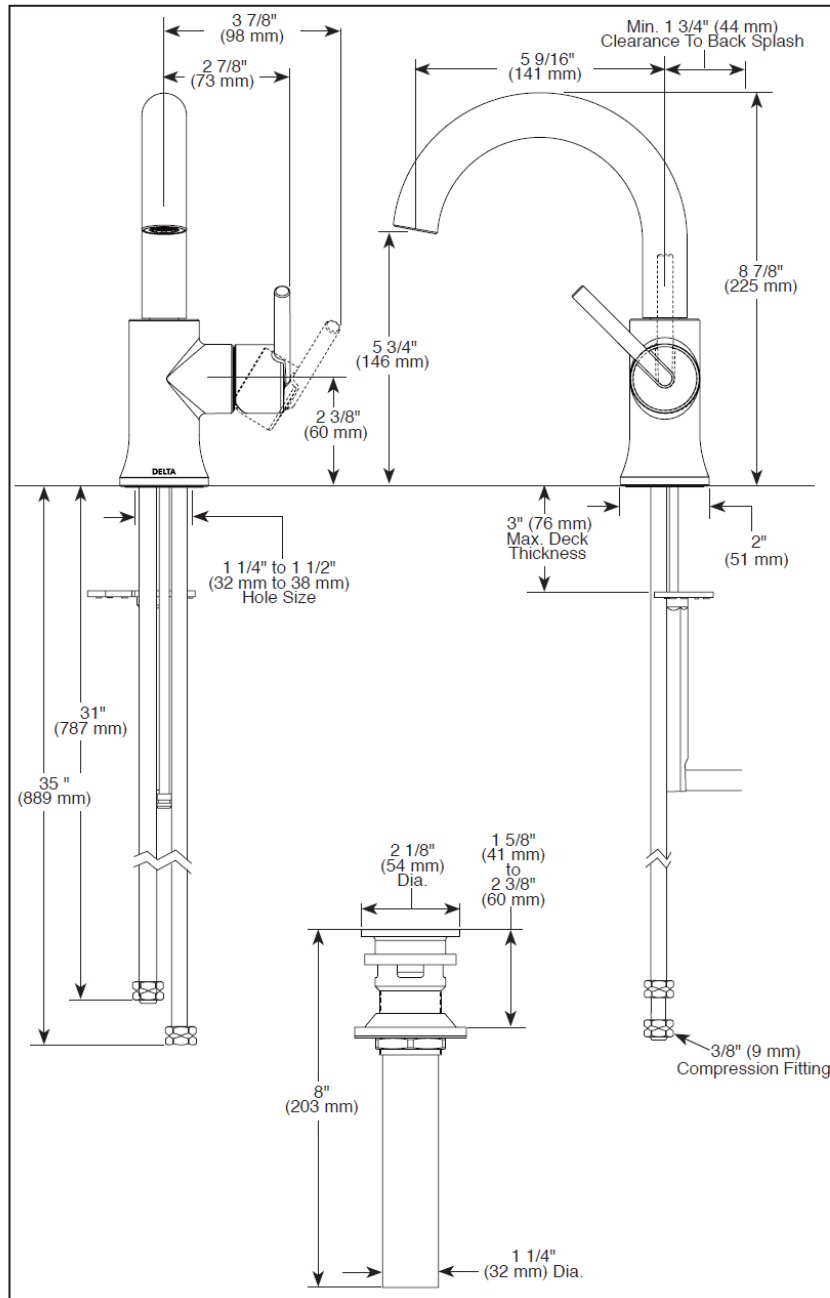
Delta reserves the right (1) to make changes in specifications and materials, and (2) to change or discontinue models, both without notice or obligation. Dimensions are for reference only. See current full-line price book or www.deltafaucet.com for finish options and product availability.

DSP-B-T17059 Rev. I



Submitted Model No.: _____

Specific Features: _____



▲ Designate Proper Finish Suffix

Delta reserves the right (1) to make changes in specifications and materials, and (2) to change or discontinue models, both without notice or obligation. Dimensions are for reference only. See current full-line price book or www.deltafaucet.com for finish options and product availability.

DSP-L-559HA-DST Rev. E



see what Delta can do™

BATHROOM FAUCET

- Trinsic® Collection
- High Arc Swivel Spout

FEATURES:

- Euro-Motion Diamond™ Valve

STANDARD SPECIFICATIONS:

- Max. flow rate 1.2 gpm @ 60 psi, 4.5 L/min @ 414 kPa (559HA-DST)
- Max. flow rate 1.0 gpm @ 60 psi, 3.8 L/min @ 414 kPa (559HA-GPM-DST)
- Single hole mount
- Spout swivels 360°
- Solid metal construction
- Diamond coated ceramic cartridge
- Red/blue indicator markings
- Models include metal push-pop drain

WARRANTY

- Parts and Finish - Lifetime limited warranty; or for commercial purchasers, 10 years for multi-family residential (apartments and condominiums) and 5 years for all other commercial uses, in each case from the date of purchase.
- Electronic Parts and Batteries (if applicable) - 5 years from the date of purchase; or for commercial purchasers, 1 year from the date of purchase. No warranty is provided on batteries.



COMPLIES WITH:

- ASME A112.18.1 / CSA B125.1
- ASME A112.18.2 / CSA B125.2
- Indicates compliance to ICC/ANSI A117.1 - Valve control only
- EPA WaterSense®
- Verified compliant with .25% weighted average Pb content regulations.

Delta Faucet Company

55 E. 111th Street, Indianapolis, IN 46280
350 South Edgeware Road, St. Thomas, ON N5P 4L1
© 2020 Delta Faucet Company



CONCEALED TRAPWAY CADET® 3 FloWise® RIGHT HEIGHT® ELONGATED TOILET

BARRIER FREE

VITREOUS CHINA

CONCEALED TRAPWAY CADET® 3 FloWise® RIGHT HEIGHT® ELONGATED TOILET

☐ 2989.101

- Vitreous china
- Meets definition for HET (High Efficiency Toilet)
- High efficiency (4.8 Lpf/1.28 gpf)
- Meets EPA WaterSense® criteria
- 305mm (12") rough-in
- 16-1/2" rim height for accessible applications
- EverClean® surface inhibits the growth of stain- and odor-causing bacteria, mold, and mildew on the surface
- Features the **Cadet® 3 Flushing System**
- Elongated siphon action jetted bowl with smooth-sided, concealed trapway
- Generous 9" x 8" water surface area
- PowerWash® rim scrubs bowl with each flush
- Oversized 3" flush valve
- Chrome trip lever
- Includes top mounting, plastic Slow-Close seat and cover with easy lift-off feature for simple removal and attachment for cleaning, packed with bowl
- 2 color-matched bolt hole covers
- Lifetime warranty on chinaware, 5 year warranty on all mechanical parts, and 1 year warranty on seat

☐ 2989.813 Same as above except with trip lever on right hand side

☐ 3075.000 Right Height® Elongated Bowl with Seat

☐ 4000.101 Tank

☐ 4000.813 Tank with right hand trip lever

☐ 5024A.65G Preferred Seat: Transitional Elongated Luxury Seat

Nominal Dimensions:

768 x 400 x 781mm
(30-1/4" x 15-3/4" x 30-3/4")

Fixture and toilet seat only, supply by others

Compliance Certifications -

Meets or Exceeds the Following Specifications:

- ASME A112.19.2/CSA B45.1-08 for Vitreous China Fixtures
- US EPA WaterSense® Specification for HET's



SEE REVERSE FOR ROUGHING-IN DIMENSIONS

To Be Specified:

- ☐ Color: ☐ White
- ☐ Supply with stop:



MEETS THE AMERICANS WITH DISABILITIES ACT GUIDELINES
AND ICC ANSI A117.1 REQUIREMENTS FOR ACCESSIBLE AND
USABLE BUILDING FACILITIES-CHECK LOCAL CODES.

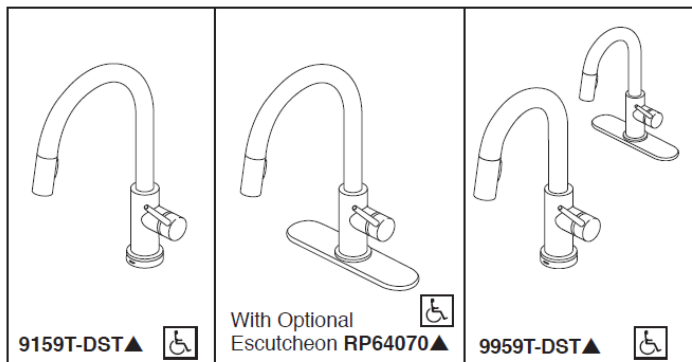


PART OF **LIXIL**

K2-97

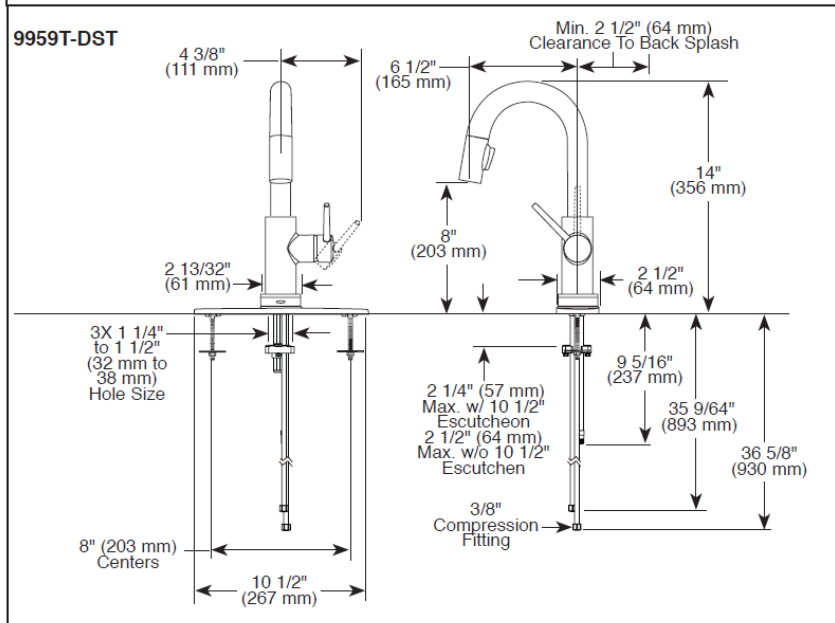
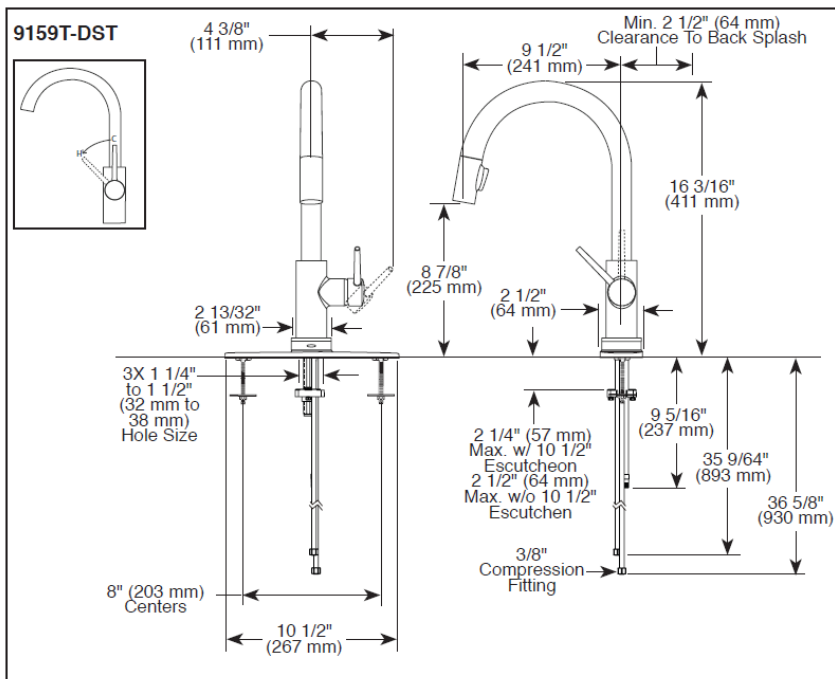
© 2017 AS America Inc.

spec_2989.101 Concealed Trapway Cadet3FW RH-el Rev. 9/17



Submitted Model No.: _____

Specific Features: _____



▲ Designate proper finish suffix

Delta reserves the right (1) to make changes in specifications and materials, and (2) to change or discontinue models, both without notice or obligation. Dimensions are for reference only. See current full-line price book or www.deltafaucet.com for finish options and product availability.

DSP-K-9159T-DST Rev. G



see what Delta can do™

KITCHEN FAUCETS

- Trinsic® Collection
- Single Handle Pull-Down

FEATURES:

- Touch2O® Technology
- DIAMOND Seal® Technology
- MagnaTite® Magnetic Docking
- Touch-Clean® Sprayhead

STANDARD SPECIFICATIONS:

- Maximum 1.8 gpm @ 60 PSI, 6.8 L/Min @ 414 kPa
- One or three hole mount (escutcheon optional, not included)
- Diamond coated ceramic cartridge
- 3/8" O.D. straight, staggered PEX supply lines
- Spout rotates 360°
- Red/Blue indicator markings
- Two-function wand; Aerated stream or spray
- Dual integral check valves in sprayer
- LED indicator light signals on-off, water temperature and when batteries run low
- Uses 6 AA (included) or 6 C (optional) batteries
- Optional (EP73954) 120V AC adapter available (3 prong grounded outlet required)
- Quick Snap® connect hoses

WARRANTY

- Parts and Finish - Lifetime limited warranty; or for commercial purchasers, 10 years for multi-family residential (apartments and condominiums) and 5 years for all other commercial uses, in each case from the date of purchase.
- Electronic Parts and Batteries (if applicable) - 5 years from the date of purchase; or for commercial purchasers, 1 year from the date of purchase. No warranty is provided on batteries.

COMPLIES WITH:

- ASME A112.18.1 / CSA B125.1
- ASME A112.18.6
- Indicates compliance to ICC/ANSI A117.1
- Verified compliant with .25% weighted average Pb content regulations.

Delta Faucet Company

55 E. 111th Street, Indianapolis, IN 46280
350 South Edgeware Road, St. Thomas, ON N5P 4L1
© 2020 Delta Faucet Company



Using Water Efficiently: Ideas for Residences

Efficient water use can have major environmental, public health, and economic benefits by helping to improve water quality, maintain aquatic ecosystems, and protect drinking water resources. Efficient use of water, through behavioral, operational, or equipment changes, if practiced broadly can help mitigate the effects of drought. Efficiency measures can also save the homeowner money on their water and energy bills. This list of measures is not meant to be comprehensive, but rather a starting point. Other sources of information on water efficiency are available through EPA's web site (<http://www.epa.gov/OWM/genwave.htm>), and innumerable other sources, some of which may be accessed through the EPA web site, or through WaterWiser, The Water Efficiency Clearinghouse (<http://www.waterwiser.org>).

Bathroom — where over half of all water use inside a house takes place:

- Do not let the water run while shaving or brushing teeth.
- Take short showers instead of tub baths. Turn off the water while soaping or shampooing.
- If you must use a tub, close the drain before turning on the water and fill the tub only half full. Bathe small children together.
- Never use your toilet as a waste basket.

Kitchen and Laundry — simple practices that save a lot of water:

- Keep drinking water in the refrigerator instead of letting the faucet run until the water is cool.
- Wash fruits and vegetables in a basin. Use a vegetable brush.
- Do not use water to defrost frozen foods; thaw in the refrigerator overnight.
- Scrape, rather than rinse, dishes before loading into the dishwasher; wash only full loads.
- Add food wastes to your compost pile instead of using the garbage disposal.
- Wash only full loads of laundry or use the appropriate water level or load size selection on the washing machine.

Equipment — homes with high-efficiency plumbing fixtures and appliances save about 30% of indoor water use and yield substantial savings on water, sewer, and energy bills:

- Consider purchasing high-efficiency toilets, or place a plastic container filled with water in the tank of your conventional toilet. Be sure it does not interfere with operation of the toilet's flush mechanisms.
- Install low-flow faucet aerators and showerheads.
- Consider purchasing a high efficiency washing machine which can save over 50% in laundry water and energy use.
- Repair all leaks. A leaky toilet can waste 200 gallons per day. To detect leaks in the toilet, add food coloring to the tank water. If the colored water appears in the bowl, the toilet is leaking. Toilet repair advice is available at www.toiletology.com/index.shtml.