

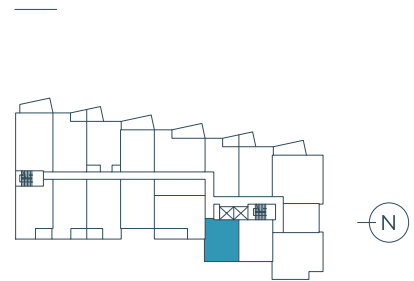


1 Bed, 1 Bath | 553 s.f.

# RILEY ALT

**DIMENSIONS**

- Kitchen : 9.1' x 11.2'
- Living Room : 9.1' x 9.3'
- Bedroom : 9.8' x 12.4'



The builder reserves the right to modify or change plans, specifications, features and prices without notice. Materials may be substituted with equivalent or better at the builder's sole discretion. All dimensions and sizes are approximate and are based on architectural measurements. As reverse, mirrored and/or flipped plans occur throughout the building, please see architectural plans if material to your decision to rent. Renderings, furnishings and equipment shown are an artist's conception and are intended as a general reference only. Please see the disclosure statement for specific offering details. E. & O.E.

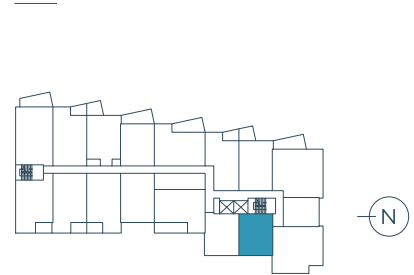


1 Bed, 1 Bath | 541 s.f.

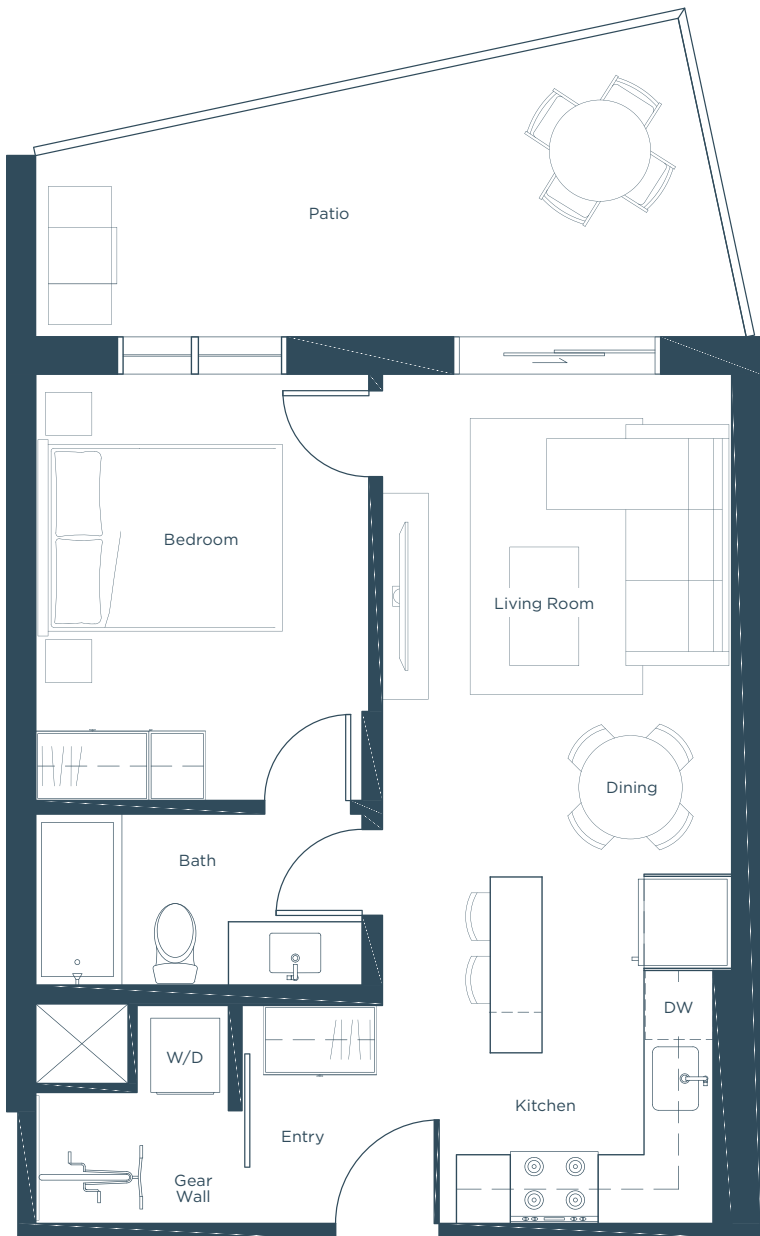
## RILEY

### DIMENSIONS

- Kitchen : 10.1' x 11.2'
- Living Room : 10.1' x 9.3'
- Bedroom : 9.8' x 12.4'



The builder reserves the right to modify or change plans, specifications, features and prices without notice. Materials may be substituted with equivalent or better at the builder's sole discretion. All dimensions and sizes are approximate and are based on architectural measurements. As reverse, mirrored and/or flipped plans occur throughout the building, please see architectural plans if material to your decision to rent. Renderings, furnishings and equipment shown are an artist's conception and are intended as a general reference only. Please see the disclosure statement for specific offering details. E. & O.E.

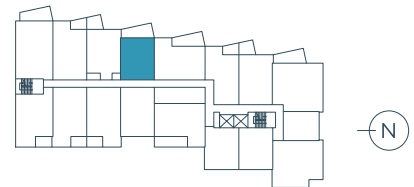


1 Bed, 1 Bath | 547 s.f.

## RILEY 2

### DIMENSIONS

- Kitchen : 7.5' x 10.1'
- Living Room : 10.1' x 9.6'
- Bedroom : 9.8' x 12.4'
- Patio : 20.7' x 5.3'/9.3'



The builder reserves the right to modify or change plans, specifications, features and prices without notice. Materials may be substituted with equivalent or better at the builder's sole discretion. All dimensions and sizes are approximate and are based on architectural measurements. As reverse, mirrored and/or flipped plans occur throughout the building, please see architectural plans if material to your decision to rent. Renderings, furnishings and equipment shown are an artist's conception and are intended as a general reference only. Please see the disclosure statement for specific offering details. E. & O.E.

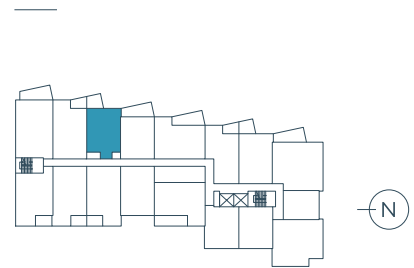


1 Bed, 1 Bath | 604 s.f.

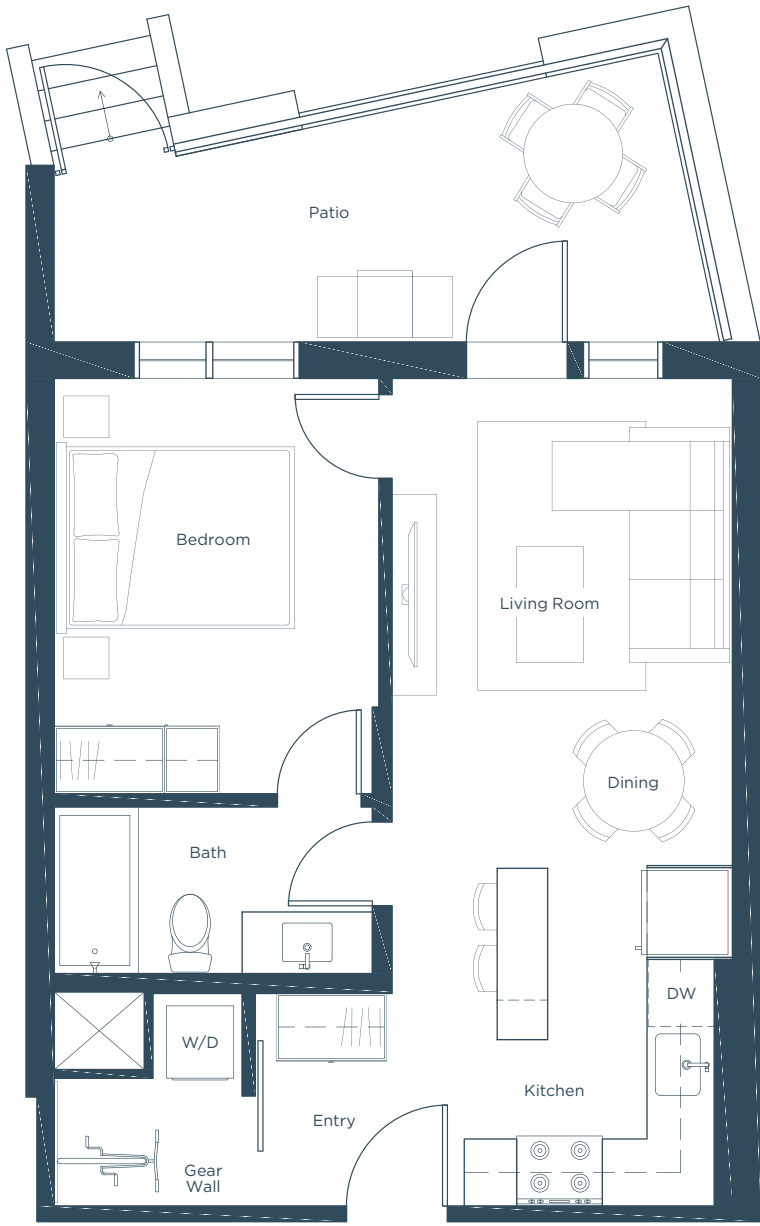
## RILEY 2 ALT

### DIMENSIONS

Kitchen : 9.7' x 10.2'  
 Living Room : 10.1' x 10'  
 Bedroom : 9.2' x 13'  
 Patio : 10.4' x 7.5'



The builder reserves the right to modify or change plans, specifications, features and prices without notice. Materials may be substituted with equivalent or better at the builder's sole discretion. All dimensions and sizes are approximate and are based on architectural measurements. As reverse, mirrored and/or flipped plans occur throughout the building, please see architectural plans if material to your decision to rent. Renderings, furnishings and equipment shown are an artist's conception and are intended as a general reference only. Please see the disclosure statement for specific offering details. E. & O.E.



1 Bed, 1 Bath | 547 s.f.

## RILEY 2

### WALK-OUT

#### DIMENSIONS

- Kitchen : 7.5' x 10.1'
- Living Room : 10.1' x 9.6'
- Bedroom : 9.8' x 12.4'
- Patio : 19.1' x 4.9'/8.8'



The builder reserves the right to modify or change plans, specifications, features and prices without notice. Materials may be substituted with equivalent or better at the builder's sole discretion. All dimensions and sizes are approximate and are based on architectural measurements. As reverse, mirrored and/or flipped plans occur throughout the building, please see architectural plans if material to your decision to rent. Renderings, furnishings and equipment shown are an artist's conception and are intended as a general reference only. Please see the disclosure statement for specific offering details. E. & O.E.



1 Bed, 1 Bath | 604 s.f.

## RILEY 2

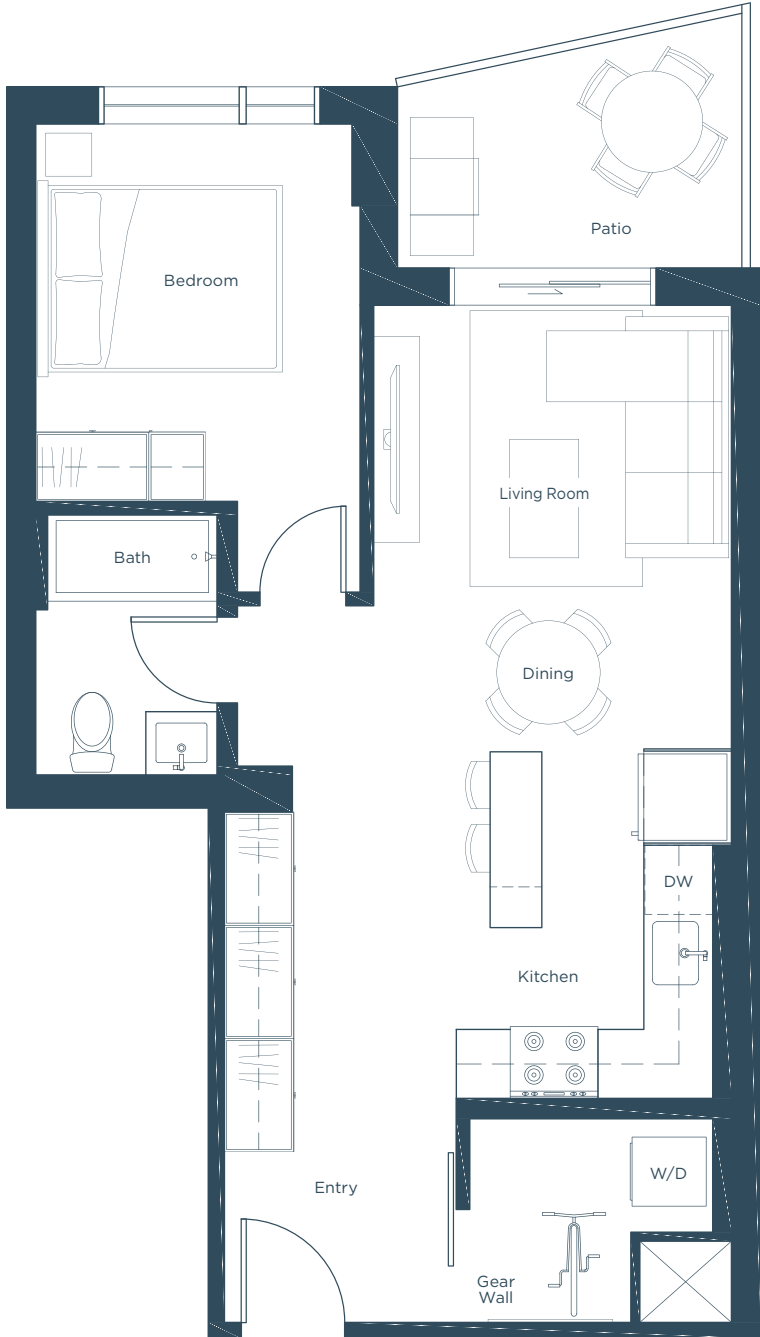
WALK-OUT ALT

### DIMENSIONS

Kitchen	: 9.7' x 10.2'
Living Room	: 10.1' x 10'
Bedroom	: 9.2' x 13'
Patio	: 9.1' x 6.11'



The builder reserves the right to modify or change plans, specifications, features and prices without notice. Materials may be substituted with equivalent or better at the builder's sole discretion. All dimensions and sizes are approximate and are based on architectural measurements. As reverse, mirrored and/or flipped plans occur throughout the building, please see architectural plans if material to your decision to rent. Renderings, furnishings and equipment shown are an artist's conception and are intended as a general reference only. Please see the disclosure statement for specific offering details. E. & O.E.

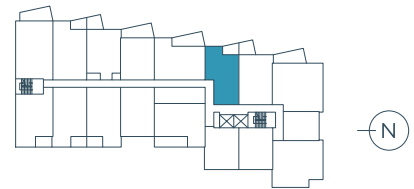


1 Bed, 1 Bath | 626 s.f.

# RILEY 3

**DIMENSIONS**

- Kitchen : 7.5' x 10.1'
- Living Room : 10.4' x 8.8'
- Bedroom : 9.5' x 10.1'
- Patio : 10' x 5.3'/7.5'



The builder reserves the right to modify or change plans, specifications, features and prices without notice. Materials may be substituted with equivalent or better at the builder's sole discretion. All dimensions and sizes are approximate and are based on architectural measurements. As reverse, mirrored and/or flipped plans occur throughout the building, please see architectural plans if material to your decision to rent. Renderings, furnishings and equipment shown are an artist's conception and are intended as a general reference only. Please see the disclosure statement for specific offering details. E. & O.E.