

HARVEST
TOWNHOME
Rentals

SPACIOUS. STYLISH. CONNECTED.

Where Modern Living Meets Everyday Comfort

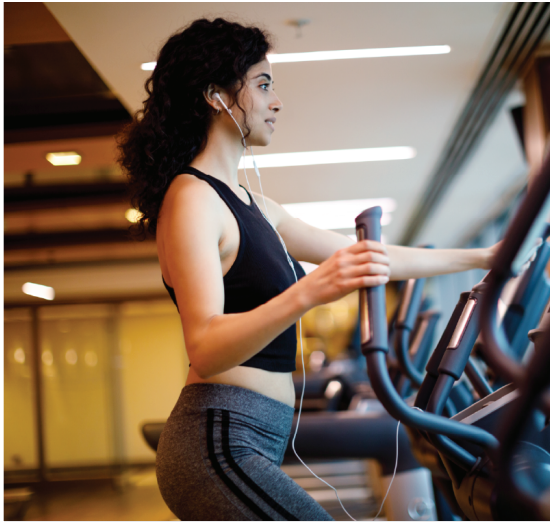
WELCOME

Located in The Meadows, Rosewood—where space, style, and everyday convenience come together. These spacious three-storey homes are thoughtfully designed with luxury finishes, soaring 9-foot ceilings, air conditioning, large windows, and a private attached two-car garage for added ease.

Enjoy exclusive access to a resident clubhouse with a fitness gym, movie theatre, lounge, and more, all just steps from parks, trails, schools, and your favorite shops and restaurants. This is home, reimagined for the way you live today.

HARVEST
TOWNHOME
Rentals

SPACE TO LIVE.
Amenities to Love.



amenities

AMENITIES

- Exclusive Resident Clubhouse with:
 - Fitness gym
 - Movie theatre room
 - Kitchen
 - Resident lounge
 - Outdoor deck & BBQ area
 - Bocce ball court
- Two elementary schools within a 5-minute drive
- Parks, green spaces, playgrounds, and scenic trails
- Steps from Meadows Market, featuring retailers such as Costco, Marshall's, Sephora, Co-op Liquor Store, Scotia Bank, PetSmart, Tim Hortons and more.

HARVEST TOWNHOME *Rentals*

DESIGNED FOR YOU.

Built for Comfort.



features

HOME FEATURES

- Large deck with ample space for entertaining
- Private attached two-car garage with extra storage, leading directly to your home
- Overheight 9-foot ceilings on the main level with expansive windows for abundant natural light
- Double-glazed windows for energy efficiency and insulation
- Wide plank woodgrain luxury vinyl flooring in living, dining, and kitchen areas for durability
- Easy-care porcelain tile flooring in bathroom
- Soft plush carpet in bedrooms and stairs
- High-efficiency LED lighting throughout the home

KITCHEN

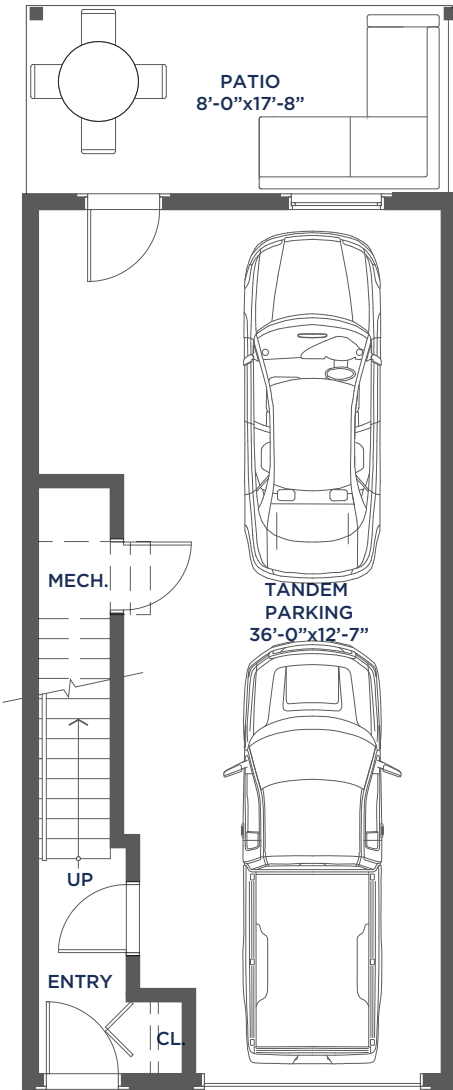
- Spacious open-concept kitchen with a large island
- Soft-close thermofoil drawers and cabinetry for a sleek, modern look
- Durable quartz countertops with a ceramic tile backsplash
- Full-height pantry for extra storage
- Efficient stainless steel sink with brushed throughout the home

BATHROOM

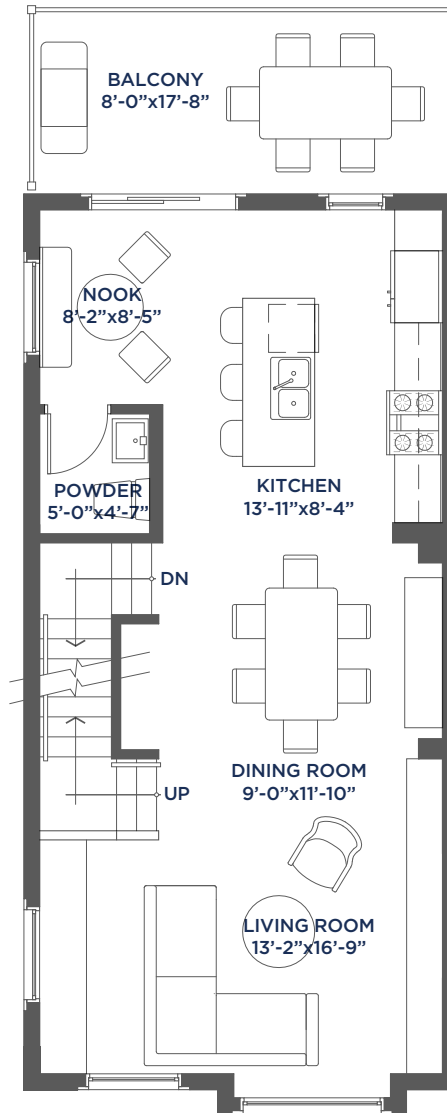
- Soft-close thermofoil drawers and cabinetry with ample storage
- Durable quartz countertops for a sleek, long-lasting finish
- Modern polished chrome faucets and showerheads
- Modern-profile dual flush toilet for water efficiency

HARVEST
TOWNHOME
Rentals

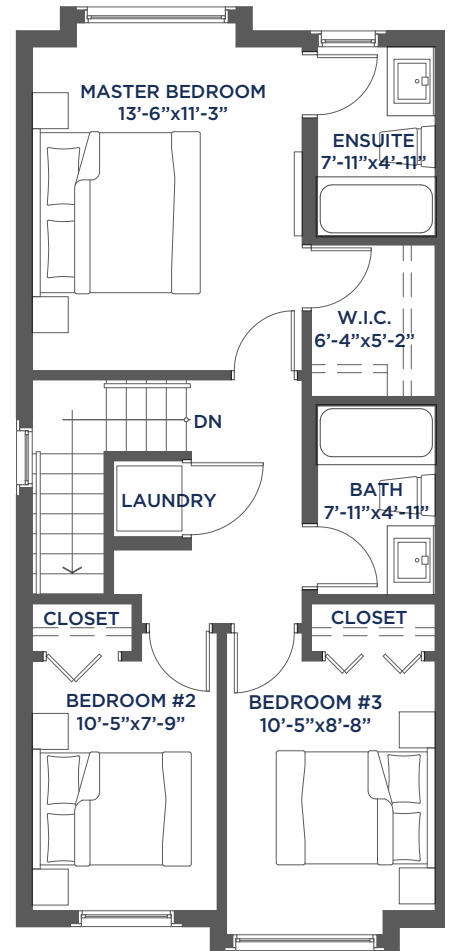
CORNER UNIT | 3 Bed + 2.5 Bath | 1,386 Sq. Ft.



GROUND FLOOR
57 sq. ft.



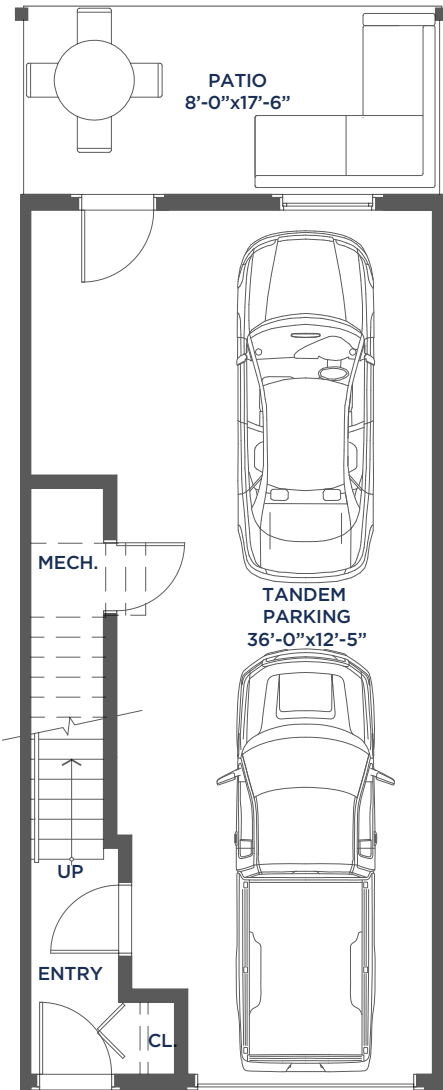
MAIN FLOOR
661 sq. ft.



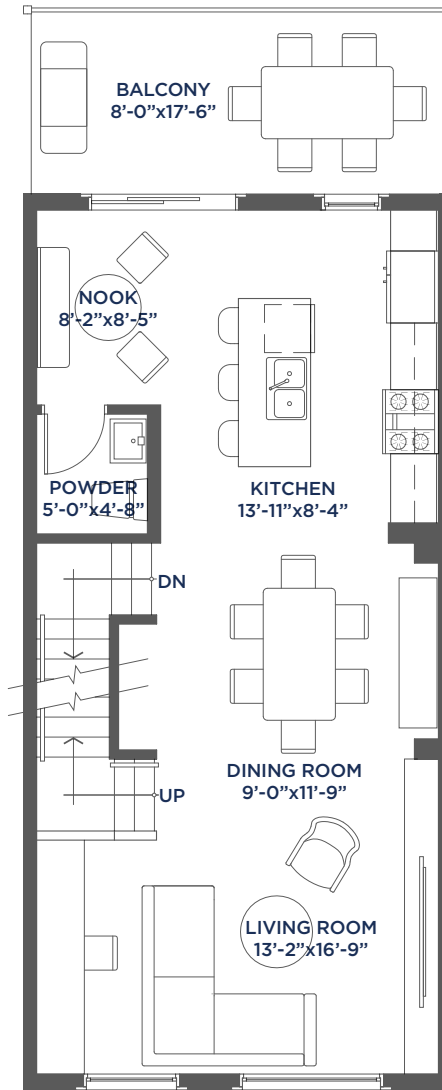
UPPER FLOOR
668 sq. ft.

HARVEST TOWNHOME *Rentals*

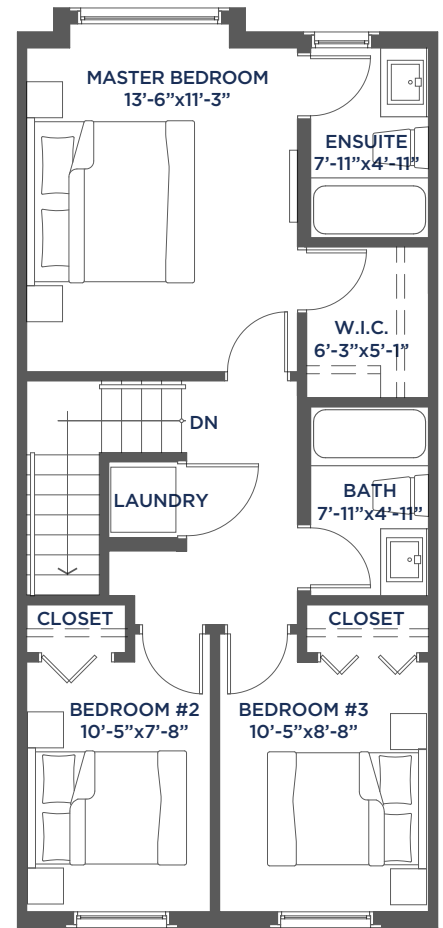
INTERIOR UNIT | 3 Bed + 2.5 Bath | 1,359 Sq. Ft.



GROUND FLOOR
56 sq. ft.



MAIN FLOOR
647 sq. ft.



UPPER FLOOR
655 sq. ft.