



# PARK PLACE

AT BAY MEADOWS

NEWMARK



Josh Rowell  
650.358.5261

John Kraft  
650.358.5277

# Project Highlights



Superior Central Location with Prominent US 101 Identity



Excellent Connectivity to HWYs 92 and 280



Institutionally Owned and Managed



Ample Covered Parking



On-Site Crunch Gym



Best-in-Class Construction and On-Site Amenities



Walking Distance to Amenities: Hotels, Restaurants, Retail



Beautiful Park-Like Setting



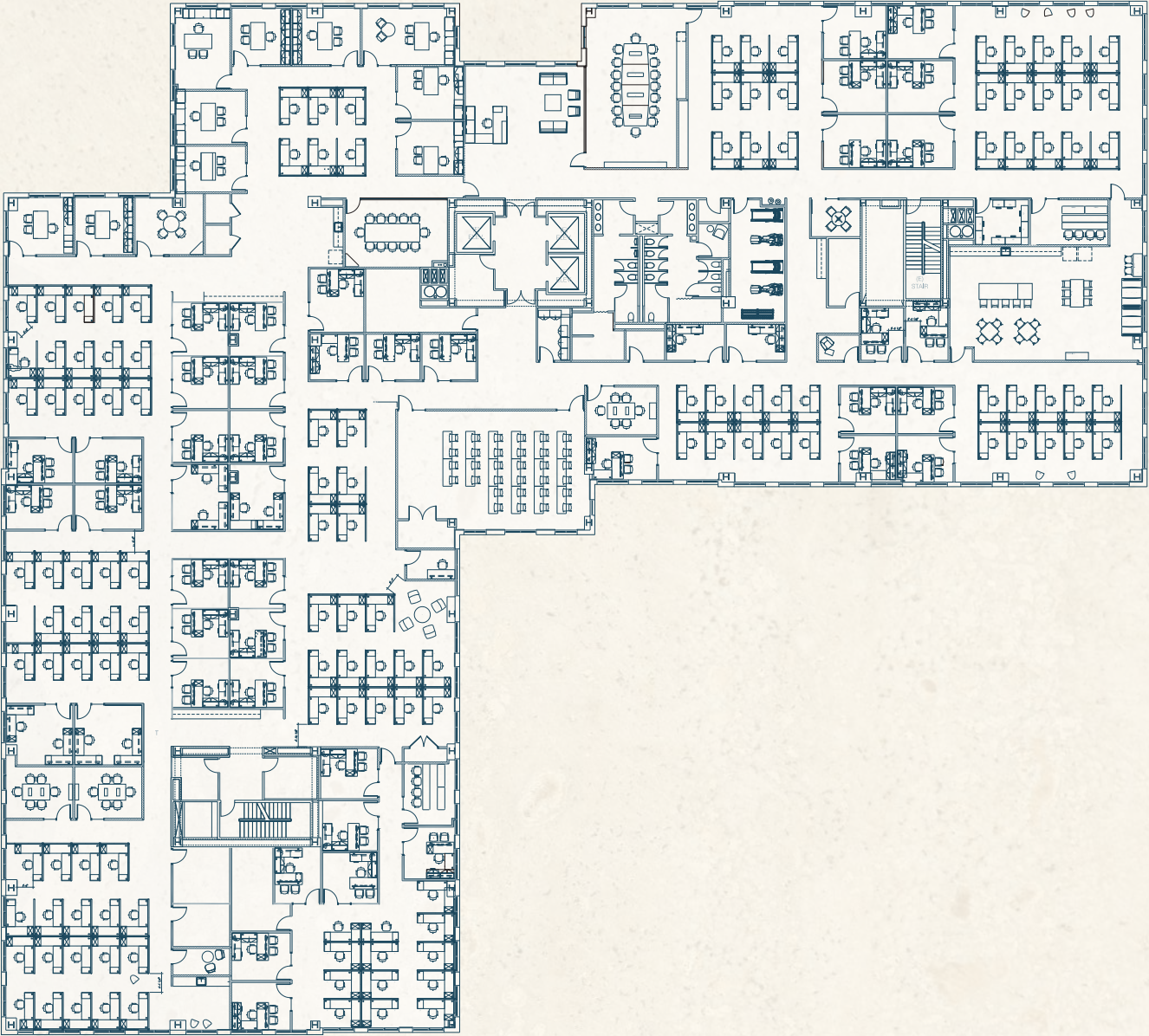
Energy Efficient LEED Gold

# Current Availabilities



## 2<sup>ND</sup> FLOOR

- As Built
- ±37,871 SF
- Full Floor Opportunity
- Available May 1, 2027



# On-site Amenities

DRIVE  
**13** MIN  
TO SFO  
AIRPORT



WALK  
**10** MIN  
TO HILLSDALE  
CALTRAIN



# Prime Transit Connectivity

Centrally located between San Francisco and Silicon Valley



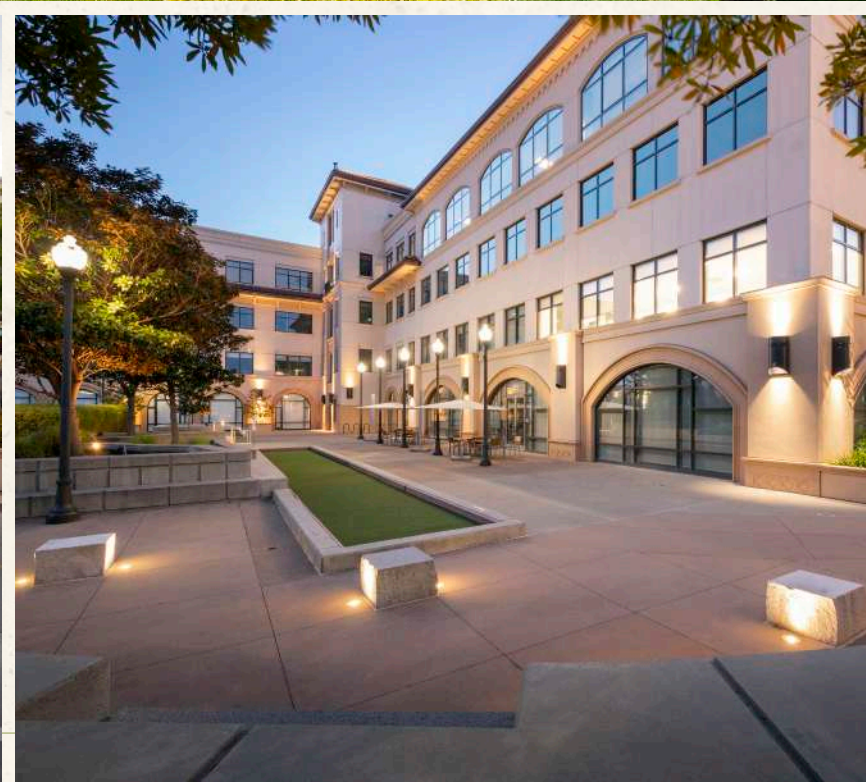
DESTINATION	DISTANCE	TRANSIT TIME
San Francisco	22 Miles	26 Mins
SF International Airport	10 Miles	13 Mins
Palo Alto	13 Miles	13 Mins
Oakland	30 Miles	32 Mins
San Jose	28 Miles	30 Mins



**PARK PLACE**  
AT BAY MEADOWS

**Caltrain** HILLSDALE STATION EXPRESS STOP









# PARK PLACE

AT BAY MEADOWS



**NEWMARK**



2950 S Delaware Street, Suite 125, San Mateo, CA 94403 | The distributor of this communication is performing acts for which a real estate license is required. The information contained herein has been obtained from sources deemed reliable but has not been verified and no guarantee, warranty or representation, either express or implied, is made with respect to such information. Terms of sale or lease and availability are subject to change or withdrawal without notice. 10731711216 • 04/26

**Josh Rowell**  
Executive Managing Director

650.358.5261  
josh.rowell@nrmk.com  
CA RE LIC. #01236434

**John Kraft**  
Senior Managing Director

650.358.5277  
john.kraft@nrmk.com  
CA RE LIC. #01787698