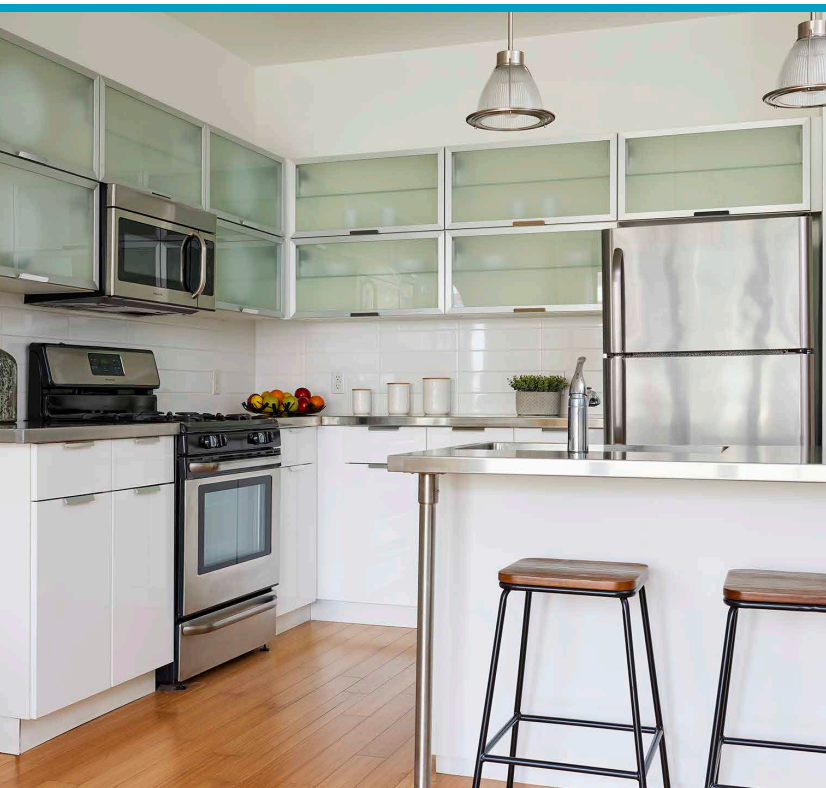
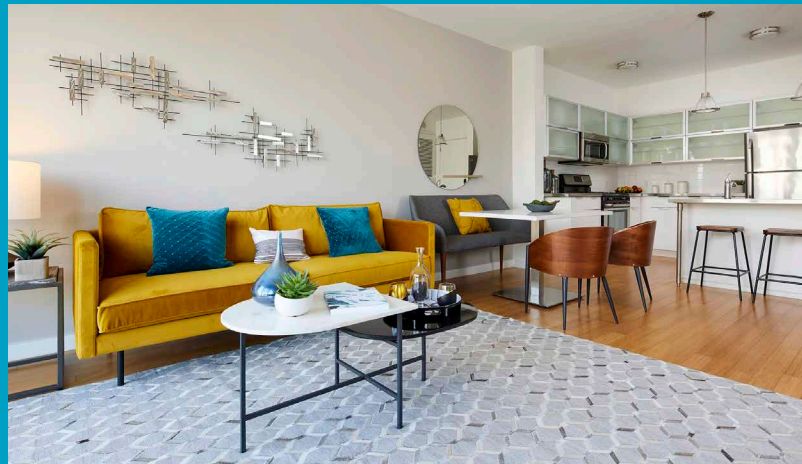


the BLVD

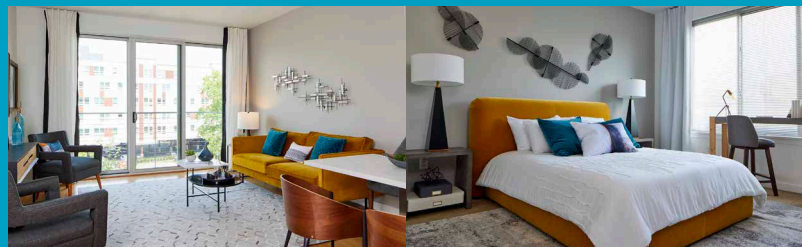
live life bold

At The BLVD, urban floor plans are elevated by the service and amenities you'd expect from a hip boutique hotel. From daring design finishes such as stainless steel countertops and frosted glass-panel cabinets to sleek social spaces like a 4,000-square foot sky terrace and a billiards lounge with an app-powered espresso machine, your new home is more than an apartment, it's a launching pad.



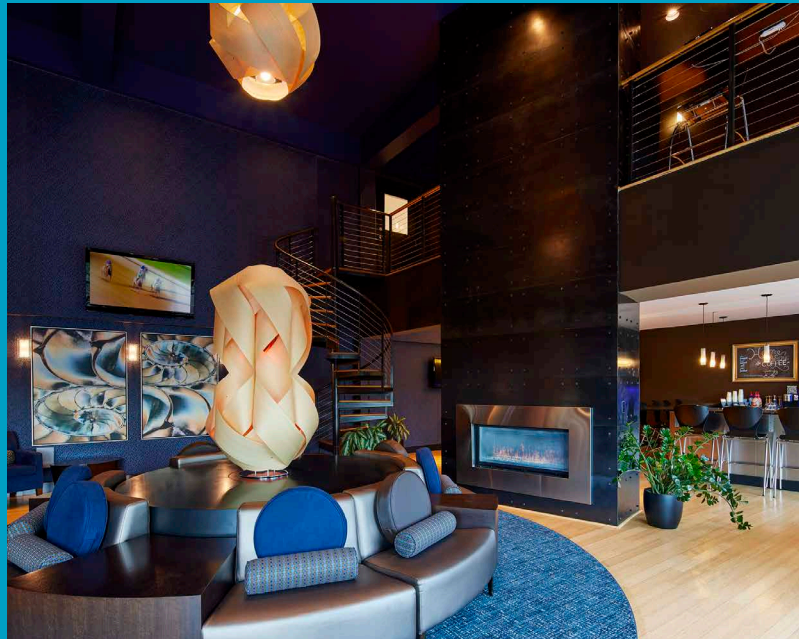
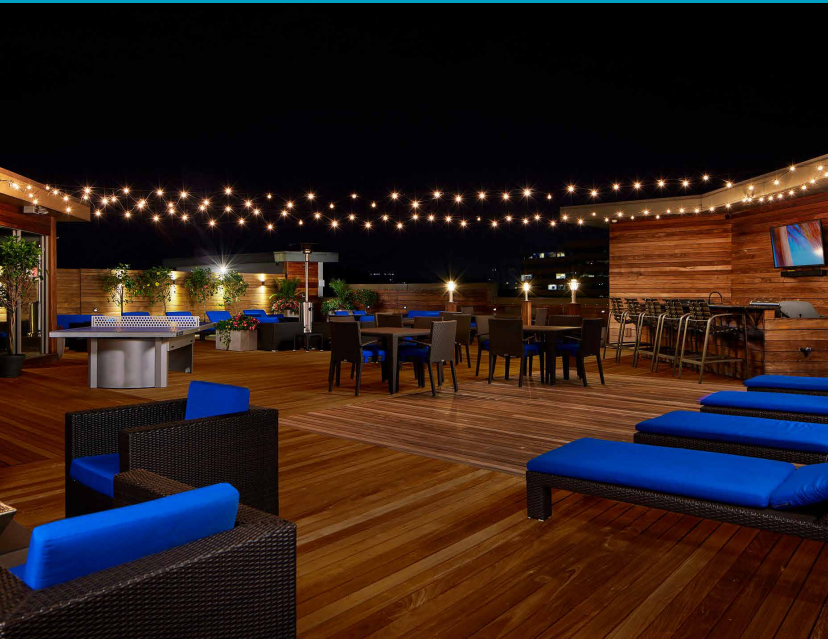
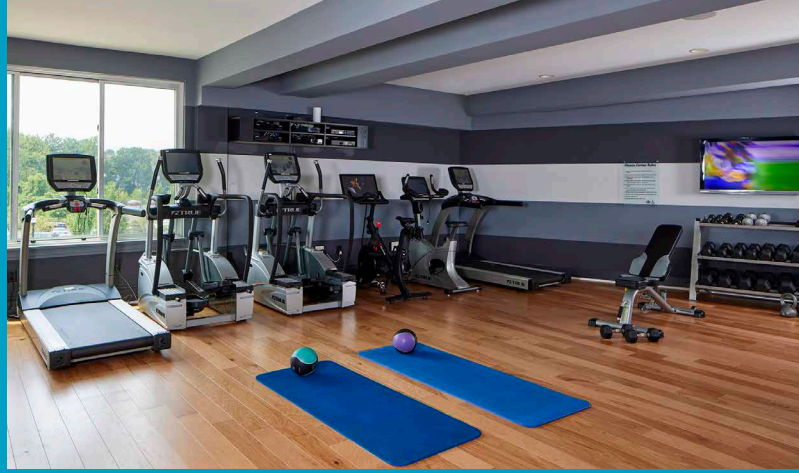
Live at The BLVD in downtown Stamford and live life in bold.

- Modern One- & Two-Bedroom Floor Plans
- Sleek Stainless Steel Appliances & Countertops
- Custom Frosted Glass-Panel Cabinets
- Bamboo Hardwood Floors
- Oversized Walk-In Closets
- Washer/Dryer



Fun for All

- Sky Terrace with BBQ's, TV Bar & Fire Pits
- 24-Hour Fitness Studio
- Lounge with Steel Fireplace, Bar & Flat Screens
- Billiards Table
- TopBrewer Espresso Machine



the
BLVD

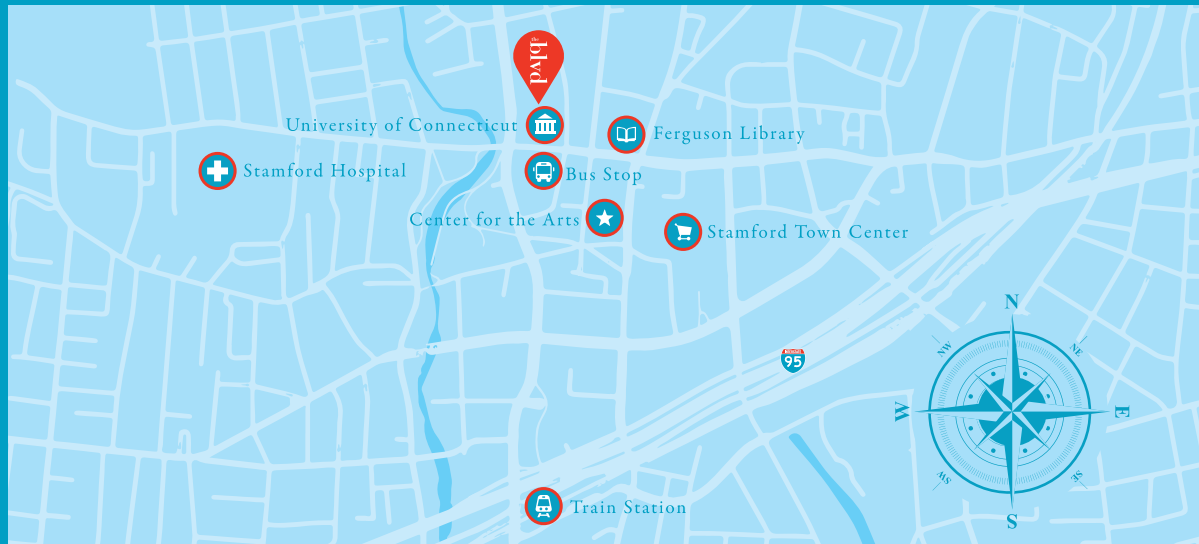
live life bold



office 203-327-2583
fax 203-327-9912

1201 Washington Blvd.
Stamford, CT 06902

www.blvdstamford.com



Step Out

New England is your oyster. Within a few steps, you'll find Stamford's liveliest shopping, theaters, restaurants and nightlife. Want to go a little further? Grab the Metro-North train and explore. You're never too far from the area's major employers or freeways either.