



NATURE | AMENITIES | LIFESTYLE



Community Features



Clubhouse

- Great Room for Indoor/Outdoor Entertaining
- Relaxing Reading Area
- Wi-Fi throughout the Clubhouse
- Kitchen for Entertaining
- Espresso Served Daily
- Tanning Facilities
- State of the Art Fitness Center with 24 hour access



Lush Interior Court Yards



Sparkling Pool



Jacuzzi



BBQ area



Covered Parking Available



Garages Available with Remote Garage Door Openers



Marina Access



River Views from Select Apartments



Easy Highway Access



Some Designated Smoke-Free Buildings



Corporate Suites Available



24hr Emergency Maintenance Service



Pet Friendly



Island View Apartment Homes introduces a relaxing, riverfront lifestyle that will undeniably captivate you! These beautiful apartment homes are masterfully crafted, feature a contemporary feel with Tuscan nuances, and are unmatched by any other apartment community in the Tri-Cities.

We offer an unparalleled blend of modern day amenities combined with outdoor conveniences, where a unique lifestyle is just outside your doorstep! Picture a stroll along the river, or biking on the Sacagawea Heritage Trail that encompasses the Tri-Cities, or a jaunt to the nearest dining and shopping just minutes away!

Luxury, convenience and quality add great value to any lifestyle, whether you are active, or prefer a more relaxing setting where the views of the river soothe the soul. Island View will accommodate the free spirit, and the content at heart.

Please visit us today for your personal tour of our beautiful apartment home community. You will be impressed!

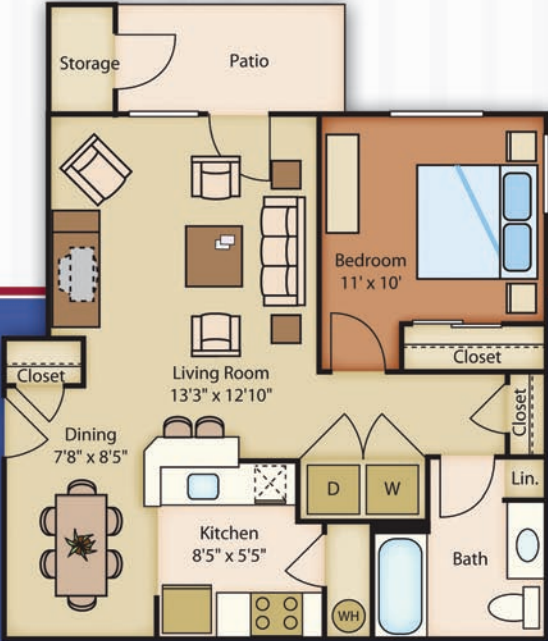
NATURE | AMENITIES | LIFESTYLE



Residence Features

- 🏡 Luxurious & Spacious 1 & 2 Bedroom Apt Homes
- 🏡 Upgraded Kitchen, Dining Room and Bathroom Lighting
- 🏡 Real wood, Contemporary-style Kitchen Cabinets
- 🏡 Extra Large, 42" Tall Kitchen Cabinets
- 🏡 Under Cabinet Lighting
- 🏡 Black Appliance Package
- 🏡 Select Ground Floor Apartments with Stained Concrete Floors (partial)
- 🏡 Full-Sized Washer and Dryer
- 🏡 Fire Sprinkler Protection in all Apartments
- 🏡 Walls in Living Room and Master Bedroom are Flat Screen TV Ready
- 🏡 Central AC and Energy Efficient Heat Pump
- 🏡 Extra Large Storage Closets with Shelves and Bike Hooks
- 🏡 Double Walled Construction for Sound Dampening
- 🏡 Energy Efficient Apartment Homes

Floor Plans



Floor plan dimensions may vary, and square footage figures are approximate.

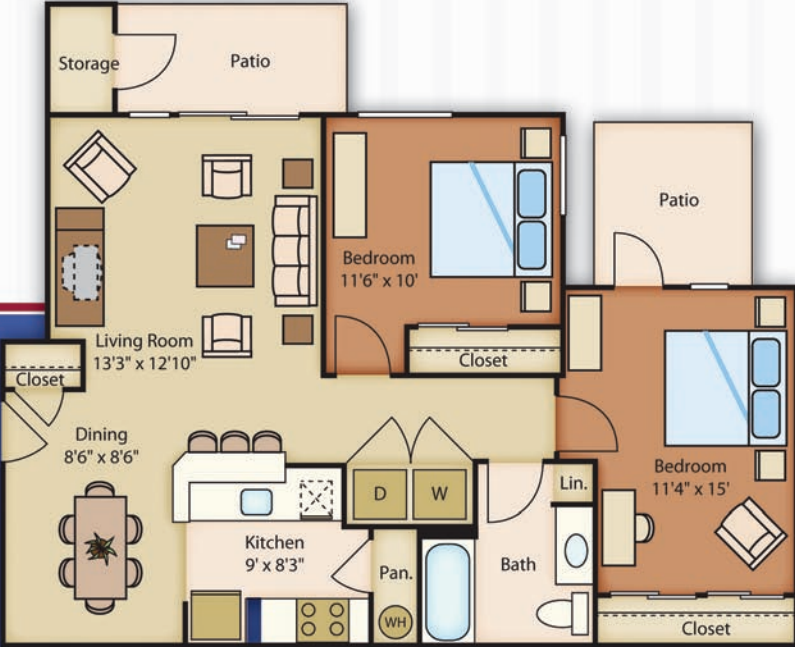
Columbia

One Bedroom | One Bath

839 sq.ft. Total Living Area

Rental Rate	Deposit	Application Fee
-------------	---------	-----------------

Floor Plans



Floor plan dimensions may vary, and square footage figures are approximate.

Riverwalk

Two Bedroom | One Bath

1,051 sq.ft. Total Living Area

Rental Rate

Deposit

Application Fee



Floor plan dimensions may vary, and square footage figures are approximate.

Wheelhouse

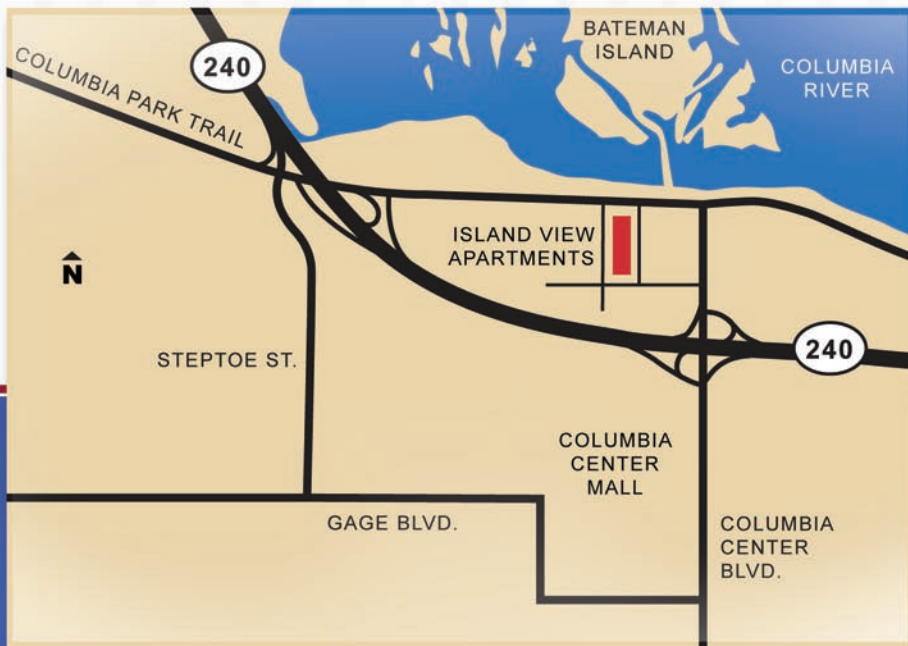
Two Bedroom | Two Bath

1,145 sq.ft. Total Living Area

Rental Rate

Deposit

Application Fee



DIRECTIONS: Heading West on 240, take the Columbia Park Trail Exit and drive East on Columbia Park Trail to Georgia Ave. - **OR** - Heading Southeast on 240, take the Columbia Center Blvd. Exit and drive North to Columbia Park Trail, and take a left.

Island View Apartment Homes

1529 Columbia Park Trail | Richland, WA 99352

T. 509.420.4999

www.IslandViewApartments.net