



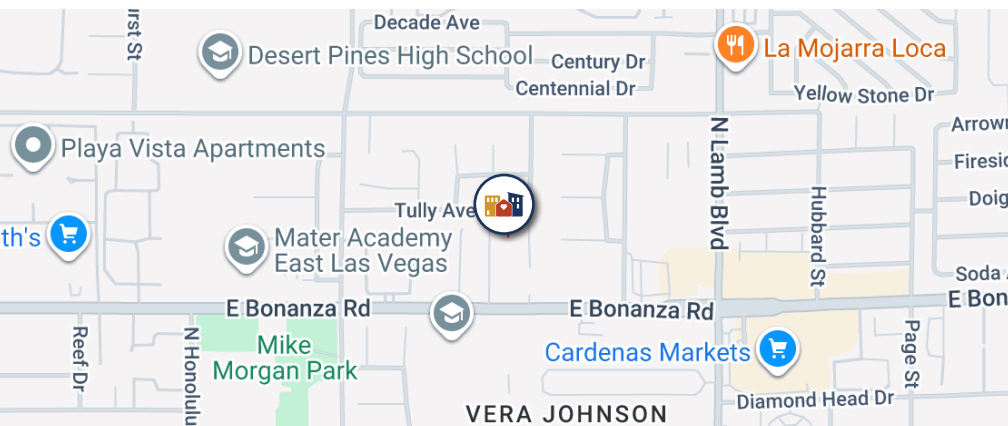
# BONANZA PINES

## SENIOR APARTMENTS



### PROPERTY FEATURES

- 24-Hour Emergency Maintenance
- On-Site Resident Services
- Water, Trash and Sewer Included
- Online Payments
- Smoke-Free Community
- Washer and Dryer Connections
- Free No Cost Laundry Rooms In Pavillion
- Courtyard/Picnic Area
- Computer Lab
- Covered Parking
- Fitness Center
- Community Rooms
- Library
- Spa
- Dog Park



4170 E. Bonanza Rd.,  
Las Vegas, NV 89110

**(702) 437-2703**  
TTY-(800) 326-6868

Property hours may vary

UPDATED: 6/10/2026



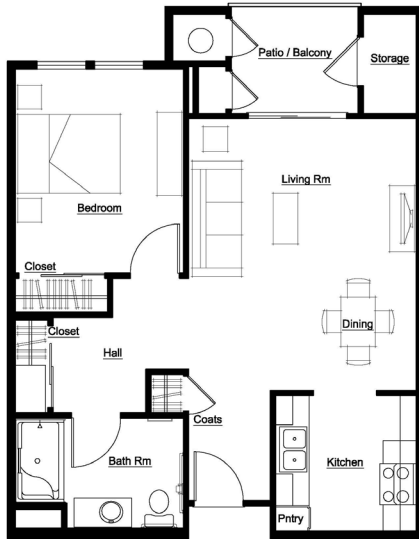
For more info/to schedule a visit, scan the QR code or e-mail  
[bonanzapineslv@nevadahand.org](mailto:bonanzapineslv@nevadahand.org)



# BONANZA PINES

## SENIOR APARTMENTS

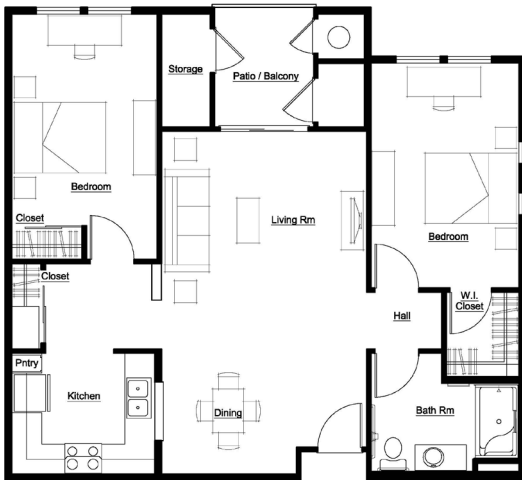
**RENT AND INCOME REQUIREMENTS**  
+ FLOOR PLANS



### 1 BED / 1 BATH • 765 Sq. Ft.

#### Annual Gross Income Limits\*

MONTHLY RENT	TOTAL # OF UNITS	MINIMUM	MAXIMUM	
			1-Person	2-Person
<b>\$526</b>	2	\$12,624	1-Person	\$22,200
			2-Person	\$25,350
<b>\$724</b>	37	\$17,376	1-Person	\$29,560
			2-Person	\$33,760
<b>\$817</b>	8	\$19,608	1-Person	\$36,950
			2-Person	\$42,200
<b>\$922</b>	1	\$22,128	1-Person	\$36,950
			2-Person	\$42,200



### 2 BED / 1 BATH • 968-1091 Sq. Ft.

#### Annual Gross Income Limits\*

MONTHLY RENT	TOTAL # OF UNITS	MINIMUM	MAXIMUM	
			1-Person	2-Person
<b>\$634</b>	2	\$15,216	1-Person	\$22,200
			2-Person	\$25,350
<b>\$871</b>	19	\$20,904	1-Person	\$29,560
			2-Person	\$33,760
<b>\$871</b>	7	\$20,904	1-Person	\$36,950
			2-Person	\$42,200
<b>\$989</b>	81	\$23,736	1-Person	\$36,950
			2-Person	\$42,200
<b>\$1,109</b>	1	\$26,616	1-Person	\$36,950
			2-Person	\$42,200

## APPLICATION INFORMATION

Section 8 Vouchers Accepted\*\*

**Screening Fee:**  
\$26 per Adult HH Member  
\$17 for Live-in-Aide

**Holding Deposit:**  
\$250

**Security Deposit:**  
\$500 or up to 1 Month Rent  
on Conditional Credit

**Pet Fee:**  
\$250 per pet  
Weight & Breed Restrictions Apply



\*Minimum income requirement does not apply to Section 8 holders.