

[CENTRAL PLACE] BUILDING



UNIT SHOWN: UNIT 1

GLAZING

TRANSMITTANCE: VISIBLE LIGHT 43%
TRANSMITTANCE: SOLAR ENERGY 23%
U-VALUE (WINTER): 0.30 BTU
U-VALUE (SUMMER): 0.27 BTU

HEAT ISLAND EFFECT

DEFINITION: <http://www.epa.gov/heatisld/>
REFLECTIVE ROOF + PAVERS
SRI VALUES WHITE PAVERS: 81.03
 WHITE ROOFING MEMBRANE: 91.71
 WHITE BALLAST: 78

GREEN ROOF

WATER-EFFICIENT LANDSCAPING TO REDUCE IRRIGATION
WATER CONSUMPTION

PARKING CAPACITY

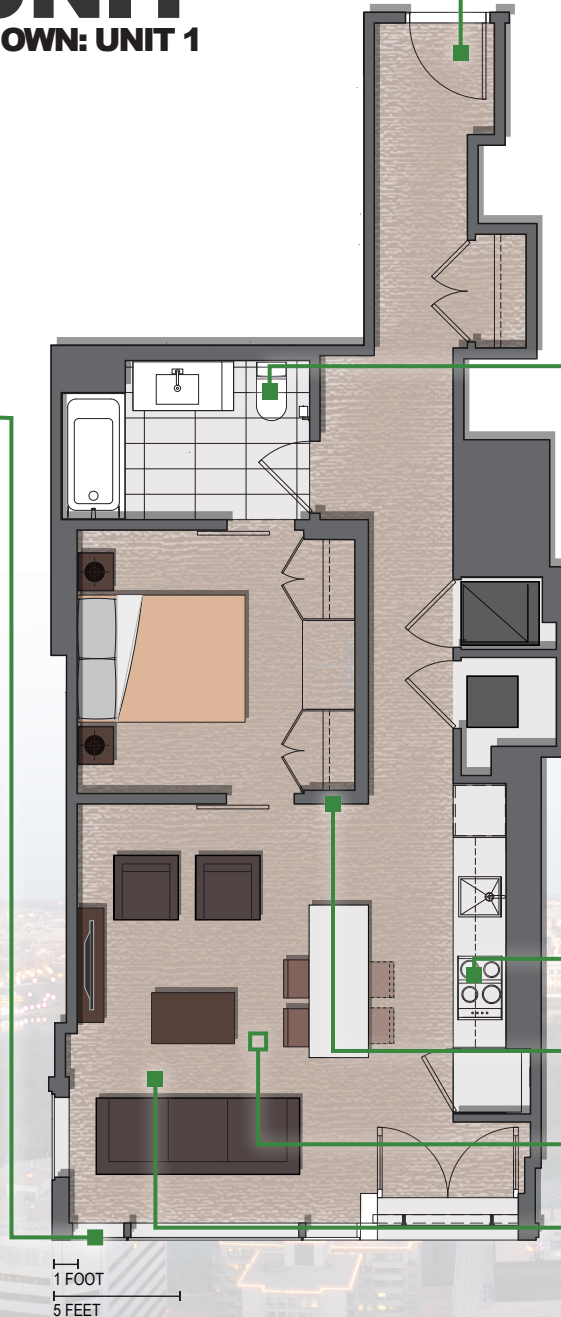
334 RESIDENTIAL SPACES
17 LOW EMISSION VEHICLE SPACES
FUTURE CHARGING STATIONS

LOCAL RETAIL

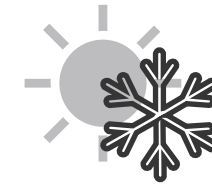
POTENTIAL DC CHAINS (SWEETGREEN, ETC.)

TRANSIT-ORIENTED

[TRANSIT MAPS ON BACK OF BROCHURE]
METRO (SMARTTRIP CARD FOR RESIDENTS)
BIKE (INCLUDES 234 BIKE STORAGE SPOTS)
BUS (EASILY ACCESSIBLE)
WALKABILITY SCORE: 90+



NEST THERMOSTAT



heating bills
reduced by **10-12%**
cooling bills
reduced by **15%**

PAYS FOR ITSELF IN TWO YEARS OR LESS

AS OF 2011,
SAVED >4 BILLION kWh
[in millions of homes worldwide]

<https://nest.com/blog/2015/09/01/meet-the-3rd-generation-nest-learning-thermostat/>

WATER-EFFICIENT TOILETS



water used by toilets
reduced by **20-60%**
[13,000 gallons saved each year]

cost reduced by
\$110/YEAR
\$2,200/LIFE OF TOILET

"Nationally, if all old, inefficient toilets in the United States were replaced with WaterSense labeled models, we could save 520 billion gallons of water per year, or the amount of water that flows over Niagara Falls in about 12 days."

<http://www.epa.gov/watersense/products/toilets.html>

APPLIANCES ENERGY STAR - RATED






LOW-VOC PAINT (VOLATILE ORGANIC COMPOUNDS)

LOW-MERCURY LAMPS REDUCE HAZARDOUS WASTE

WOOD FLOORING

FSC (FOREST STEWARDSHIP COUNCIL)
PEFC (PAN EUROPEAN FOREST CERTIFICATION)



-  **Rosslyn Central Place**
-  **WMATA Metro Rail Stop**
(www.wmata.com/rail)
-  **Bus Stop**
(<http://www.wmata.com/bus>)
-  **Capitol Bikeshare Station**
(<http://www.capitalbikeshare.com>)
-  **DC Circulator Bus Route**
(<http://www.dccirculator.com>)

ROSSLYN CENTRAL PLACE GUIDE TO GREEN

