

ALTAMONT APARTMENTS

PINE CREEK PROPERTIES

Come see the difference...

300 Enterprise Drive | Rohnert Park | CA | 94928



Altamont Apartments is a four story 230-unit apartment complex designed for senior (55+) living. The complex offers many amenities including: air conditioning, pool, spa, elevators, movie theatre, fitness room, party tables, cards and other games. Social activities are offered on a regular basis, such as a Christmas Party.

The Altamont Apartments are conveniently located within walking distance of: Senior Center, shopping, banking, post office, bus stop, dining and much more. Wi-Fi is available in common areas. Extra care was taken in construction with 1 1/2" light weight concrete between floors and 2 stud walls with extra insulation between units to provide maximum **Sound Control & Fire Sprinklers**.

The grounds are beautifully maintained and abundant parking is available. There are studios, one-bedrooms, junior penthouses and penthouse apartments. Units have ample closet space. Each resident is responsible for their own electricity, telephone and cable television. The other utilities are paid by the landlord. There is a laundry room on every floor with three washers and dryers in each of them.

Units are rented on a month-to-month basis. No smoking and no pets please.

Office: (707) 584-0655 * Fax (707) 584-0676 * Office Hours: Mon - Fri 9am - 3pm & Sat 11am - 3pm
Visit our website at www.pinecreekrentals.com * Email: altamont@pcproperties.net

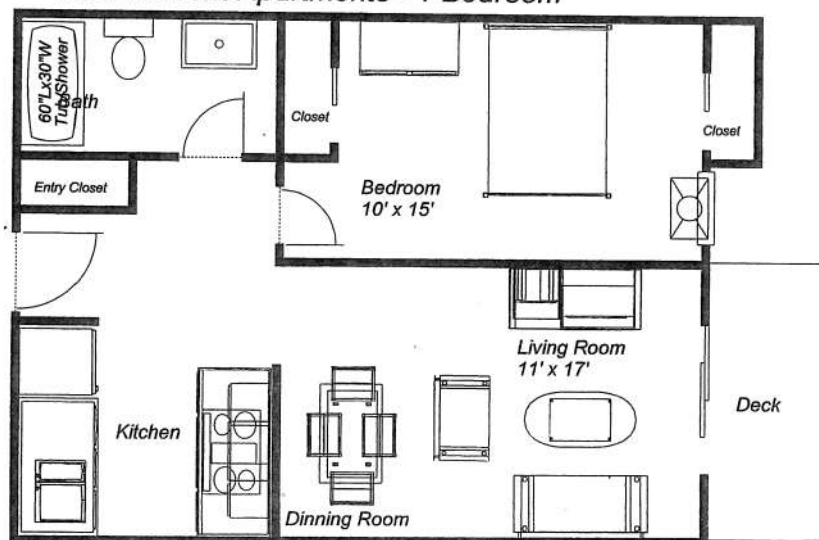
ALTAMONT APARTMENTS

PINE CREEK PROPERTIES

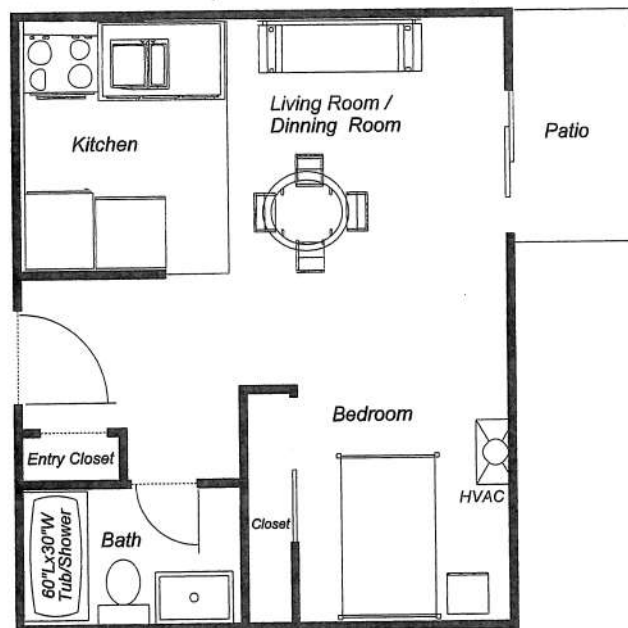
Come see the difference...

300 Enterprise Drive | Rohnert Park | CA | 94928

The Altamont Apartments - 1 Bedroom



The Altamont Apartments - Studio Apartment



RENTAL RATES

	Rent	Deposit
Studio	\$1,450.00	\$1,450.00
1 BD - Floor 1 & 2	\$1,695.00	\$1,695.00
1 BD - Floor 3 & 4	\$1,715.00	\$1,715.00
Jr. Penthouse	\$2,135.00	\$2,135.00
Penthouse	\$2,245.00	\$2,245.00

\$30 Application Fee Each

RENTAL CRITERIA

- Valid Form of Government Issued Photo ID
- Good Credit
- Income = 2 times the monthly rent
- Positive Rental Reference(s)



Office: (707) 584-0655 * Fax (707) 584-0676 * Office Hours: Mon - Fri 9am - 3pm & Sat 11am - 3pm
Visit our website at www.pinecreekrentals.com * Email: altamont@pcproperties.net

Rev. 7/19/24